

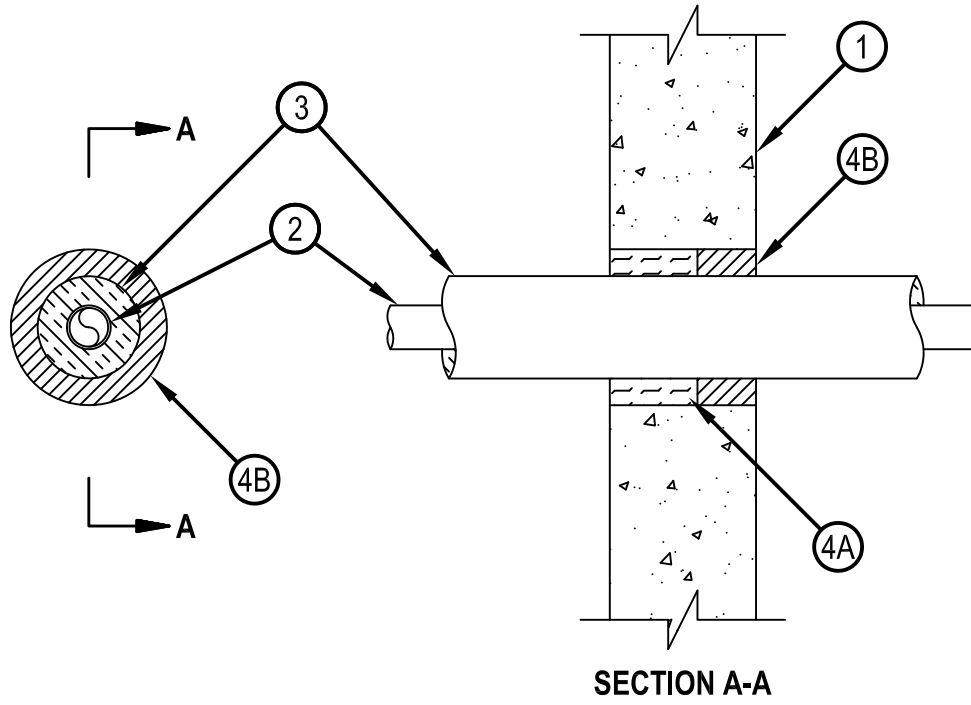


Classified by
Underwriters Laboratories, Inc.
to UL 1479 and CAN/ULC-S115

System No. W-J-5066

WJ 5066

ANSI/UL1479 (ASTM E814)	CAN/ULC S115
F Rating — 1 and 2 Hr (See Items 1 and 4)	F Rating — 1 and 2 Hr (See Items 1 and 4)
T Rating — 1/2 Hr	FT Rating — 1/2 Hr
	FH Rating — 1 and 2 Hr (See Items 1 and 4)
	FTH Rating — 1/2 Hr



1. Wall Assembly — Min 3-1/8 and 3-3/4 in. (79 and 95 mm) thick reinforced lightweight or normal weight (100-150 pcf or 1600-2400 kg/m³) concrete for 1 and 2 hr ratings, respectively. Wall may also be constructed of any UL Classified Concrete Blocks*. Max diameter of opening 4 in. (102 mm).
See Concrete Blocks (CAZT) category in the Fire Resistance Directory for names of manufacturers.
2. Through Penetrants — One metallic pipe or tube to be installed either concentrically or eccentrically within the firestop system. Pipe or tubing to be rigidly supported on both sides of the wall assembly. The following types and sizes of metallic pipes or tubing may be used:
 - A. Copper Tubing — Nom 1 in. (25 mm) diam (or smaller) Type L copper tubing.
 - B. Copper Pipe — Nom 1 in. (25 mm) diam (or smaller) Regular (or heavier) copper pipe.
3. Tube Insulation — Plastics+ — Nom 3/4 in. (19 mm) thick acrylonitrile butadiene/polyvinyl chloride (AB/PVC) flexible foam furnished in the form of tubing. The annular space between the insulated pipe and the periphery of the steel sleeve shall be min 1/4 in. (6 mm) to max 1-1/8 in. (29 mm). See Plastics+ (QMFZ2) category in the Plastics Recognized Component Directory for names of manufacturers. Any Plastics Recognized Component tube insulation material meeting the above specifications and having a UL94 Flammability Classification of 94-5VA may be used.
4. Firestop System — The firestop system shall consist of the following:
 - A. Packing Material — Min 1-5/8 in. (41 mm) or 2-1/4 in. (57 mm) thickness of min 4 pcf (64 kg/m³) mineral wool batt insulation firmly packed into opening on one side of the wall as a permanent form for 1 and 2 hr walls, respectively. Packing material to be recessed from one side of wall as required to accommodate the required thickness of fill material.
 - B. Fill, Void or Cavity Material — Sealant* — Min 1-1/2 in. (38 mm) thickness of fill material applied within opening, flush with one surface of wall.

HILTI CONSTRUCTION CHEMICALS, DIV OF HILTI INC — FS-ONE Sealant or FS-ONE MAX Intumescent Sealant

* Indicates such products shall bear the UL or cUL Certification Mark for jurisdictions employing the UL or cUL Certification (such as Canada), respectively.



Hilti Firestop Systems

Reproduced by HILTI, Inc. Courtesy of
Underwriters Laboratories, Inc.
January 21, 2015