



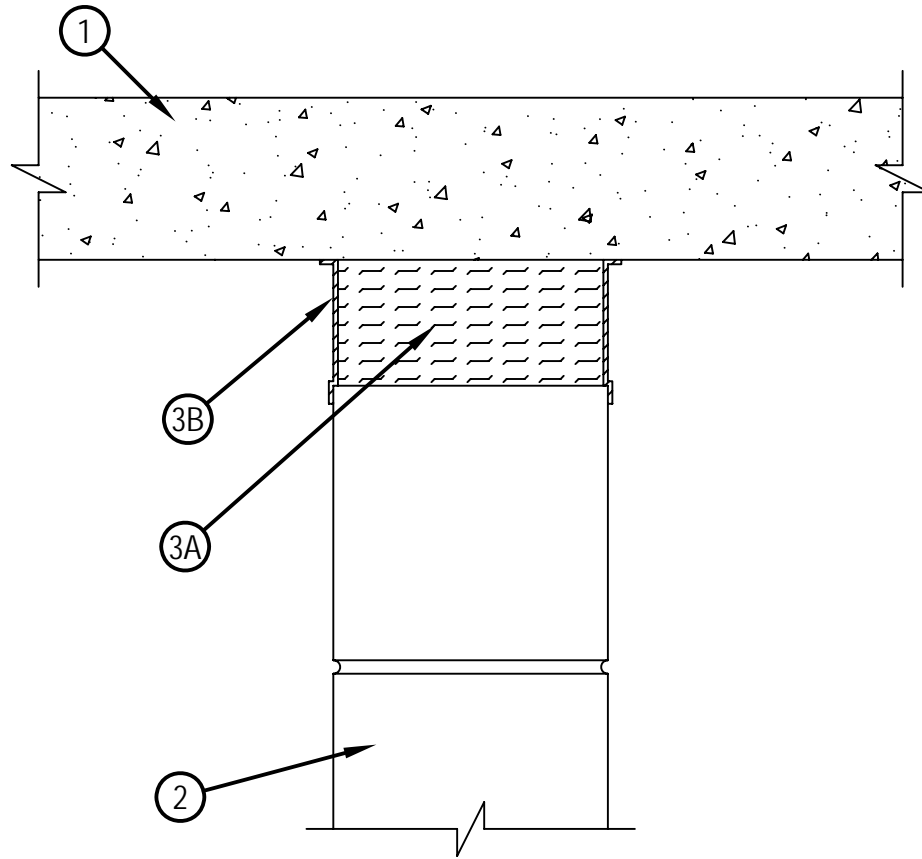
Classified by  
Underwriters Laboratories, Inc.  
to UL 2079 and CAN/ULC-S115

# System No. HW-D-0097

Assembly Rating — 2 Hr  
Nominal Joint Width — 2 In.

Class II Movement Capabilities — 14% Compression or Extension

HW-D-0097



1. Floor Assembly — Min 4-1/2 in. thick steel-reinforced lightweight or normal weight (100-150 pcf) structural concrete.
2. Wall Assembly — Min 8 in. thick steel-reinforced lightweight or normal weight (100-150 pcf) structural concrete. Wall may also be constructed of any UL Classified Concrete Blocks\*.  
See Concrete Blocks (CAZT) category in the Fire Resistance Directory for names of manufacturers.
3. Joint System — Max width of joint (at time of installation of joint system) is 2 in. The joint system is designed to accommodate a max 14 percent compression or extension from its installed width. The joint system shall consist of the following:
  - A. Forming Material — Min 4.0 pcf mineral wool batt insulation installed in joint opening as a permanent form. Batt cut to min width of 8 in. and installed cut edge-first into joint opening, parallel with joint direction, such that batt sections are compressed min 50 percent in thickness and such that the compressed batt sections are flush with both surfaces of wall. Adjoining lengths of batt to be tightly butted with butted seams spaced min 48 in. apart along the lengths of the joint.  
ROCK WOOL MANUFACTURING CO — Delta Board
  - B. Fill, Void or Cavity Material\* — Min 1/8 in. wet thickness of fill material sprayed\* or trowelled on each side of wall to completely cover mineral wool forming material and to overlap a min 1/2 in. onto concrete floor and concrete wall.  
HILTI CONSTRUCTION CHEMICALS, DIV OF HILTI INC — CP672 Firestop Spray or CFS-SP WB Firestop Joint Spray

\*Bearing the UL Classification Mark



**Hilti Firestop Systems**

Reproduced by HILTI, Inc. Courtesy of  
Underwriters Laboratories, Inc.  
June 04, 2010