

UL SYSTEM NO. F-C-2432

PLASTIC TUBING THROUGH WOOD FLOOR/CEILING ASSEMBLY

F-RATING = 1-HR. OR 2-HR.

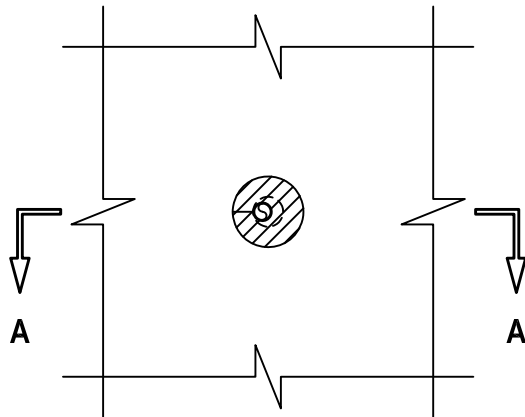
T-RATING = 1-HR. OR 2-HR.

L-RATING AT AMBIENT = LESS THAN 1 CFM / OPENING

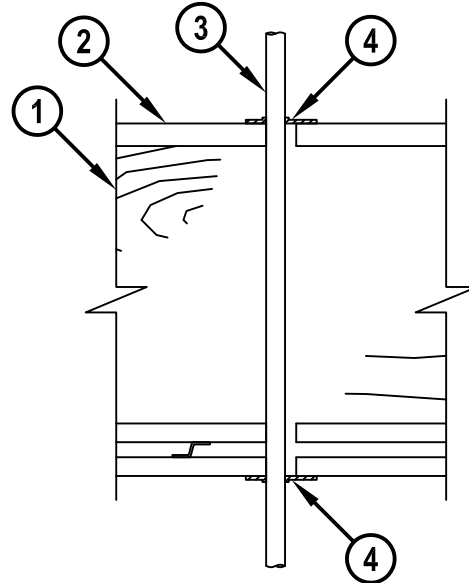
L-RATING AT 400°F = LESS THAN 1 CFM / OPENING

FC2432b.043018

BOTTOM VIEW



SECTION A-A



1. WOOD FLOOR/CEILING ASSEMBLY (UL CLASSIFIED L500 SERIES) (1-HR. OR 2-HR. FIRE-RATING) (2-HR. SHOWN).
2. LUMBER OR PLYWOOD SUBFLOOR WITH FINISH FLOOR OF LUMBER, PLYWOOD, OR FLOOR TOPPING MIXTURE.
3. MAXIMUM 1/2" NOMINAL DIAMETER DURA-LINE MICRODUCT (MIN. 0.057" WALL THICKNESS) (MANUFACTURED BY A-D TECHNOLOGIES) (CLOSED PIPING SYSTEM).
4. HILTI CFS-D 1" FIRESTOP CABLE DISC PRESSED FIRMLY AROUND THE PIPE LAPPING NOMINAL 5mm ONTO PIPE COMPLETELY COVERING OPENING AND FIRMLY PRESSED TO LAP ONTO THE FLOOR AND CEILING (OR PLATES). DISC SEAM TO BE FIRMLY PRESSED AND SEALED TIGHT.

NOTES: 1. OPENING MAY BE ROUND, RECTANGULAR, OR IRREGULAR WITH A MAXIMUM DIAMETER OF DIMENSION OF 1".
2. ANNULAR SPACE BETWEEN PENETRANT AND PERIPHERY OF OPENING = MINIMUM 0".
3. CHASE WALL [NOT SHOWN - OPTIONAL] - THE THROUGH PENETRANT MAY BE ROUTED THROUGH A NON-RATED OR RATED GYPSUM CHASE WALL.



HILTI, Inc.
Plano, Texas USA (800) 879-8000

Sheet	1 of 1
Scale	5/32" = 1"
Date	Apr. 30, 2018

Drawing No.

**FC
2432b**

Saving Lives through Innovation and Education