



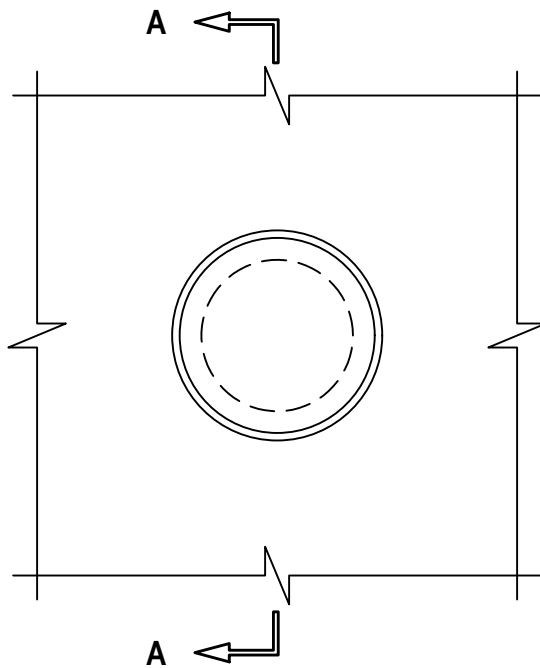
Classified by
Underwriters Laboratories, Inc.
to UL 1479

System No. W-L-2768

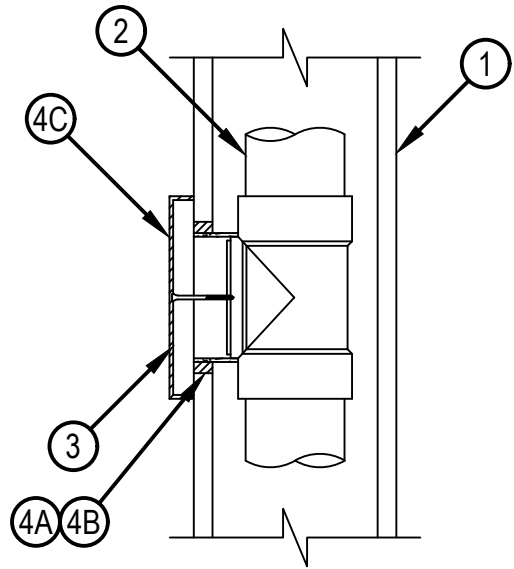
WL 2768

ANSI/UL1479 (ASTM E814)
F Rating — 1 Hr
T Rating — 1 Hr
L Rating At Ambient — Less Than 1 CFM/sq ft
L Rating At 400°F — Less Than 1 CFM/sq ft

FRONT VIEW



SECTION A-A



Hilti Firestop Systems

Reproduced by HILTI, Inc. Courtesy of
Underwriters Laboratories, Inc.
April 23, 2020

System No. W-L-2768

WL 2768

1. Wall Assembly — The 1 hr fire-rated gypsum wallboard/stud wall assembly shall be constructed of the materials and in the manner specified in the individual U400 or V400 Series Wall and Partition Designs in the UL Fire Resistance Directory and shall include the following construction features:
 - A. Studs — Wall framing to consist of steel channel studs. Studs to be minimum 6 in. (152 mm) wide by 1-1/4 in. (32 mm) deep, fabricated from 25 MSG galv steel, spaced max 24 in. (610 mm) OC.
 - B. Gypsum Board* — One layer of nom. 5/8 in. (16 mm) thick gypsum board, as specified in the individual Wall and Partition Design. Max diam of opening is 5 in. (127 mm).The hourly F and T Rating of the firestop system is equal to the hourly fire rating of the wall assembly in which it is installed.
2. Membrane-Penetrant — Nominal 3 in. diameter (or smaller) PVC Sch. 40, cellular core pipe for use in closed (process or supply) or vented (drain, waste, or vent) piping systems. Pipe installed with PVC clean-out tee and threaded plug. The Threaded PVC clean-out plug is centered behind the opening in gypsum board. Pipe to be supported to studs inside wall with at least one steel strap.
3. Escutcheon Plate — Nominal 6-1/2 in. (165 mm) stainless steel escutcheon plate to lap 3/4 in. (19 mm) beyond periphery of opening. Cover plate secured to PVC clean-out with steel screw through center of plate.
4. Firestop System — The firestop system shall consist of the following:
 - A. Fill, Void or Cavity Material — Sealant* — Min 3/8 in. (9.5 mm) bead of sealant applied to cut edge of gypsum board around periphery of opening prior to installing wrap strip (Item 4B). Used to hold the Wrap Strip in place.
HILTI CONSTRUCTION CHEMICALS, DIV OF HILTI INC — FS-ONE MAX Intumescent Sealant
HILTI CONSTRUCTION CHEMICALS, DIV OF HILTI INC
CFS-S SIL GG Firestop Silicone Sealant
 - B. Fill, Void or Cavity Material — Wrap Strip* — Two layers of 3/16 in. (5 mm) thick by 1 in. (25 mm) wide intumescent wrap strip wrapped around the opening with ends butted and held in place with tape. Wrap strip inserted into annular space and held in place with sealant (see 4A).
HILTI CONSTRUCTION CHEMICALS, DIV OF HILTI INC — CP 648E W25/1" Firestop Wrap Strip
 - C. Fill, Void, or Cavity Material - Putty Pad* — Min 1/8 in. (3.2 mm) thick moldable putty pads applied in one layer to cover entire interior surface of cover plate prior to mounting cover plate to clean-out connection.
HILTI CONSTRUCTION CHEMICALS, DIV OF HILTI INC — CP 617 Firestop Putty Pad

* Indicates such products shall bear the UL or cUL Certification Mark for jurisdictions employing the UL or cUL Certification (such as Canada), respectively.

+Bearing the UL Listing Mark



Reproduced by HILTI, Inc. Courtesy of
Underwriters Laboratories, Inc.
April 23, 2020