



All loading and design criteria supplied by customer is assumed accurate. Only the stated Design Assumptions were considered, and must be verified by the responsible Engineer of Record (EOR). The basis of Hilti component and connection design is the published data in the current Hilti Technical Guide, including material and cross-section properties, allowable load values, factors of safety, methods of calculation, and limiting factors. The EOR must verify suitability for any specific application, and the capacity of the supportive structure to receive the shown configuration and associated reaction loads. Modification to components and/or design may alter performance and must be evaluated by the EOR.

TYPICAL DETAIL TYPE:
CABLE TRAY SUPPORT

TYPICAL DETAIL DESCRIPTION:
F - SHAPE - FIXED

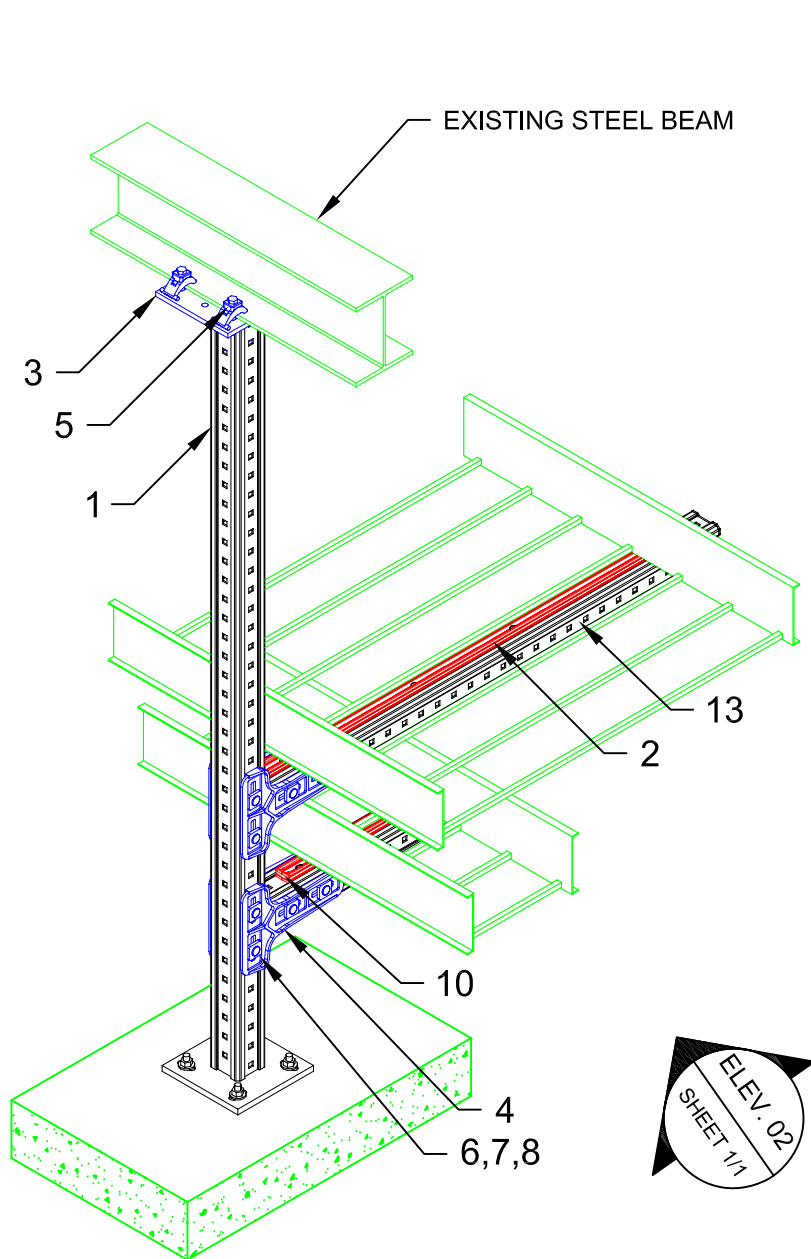
DESIGNED BY: KL	REVIEWED BY: AJV
DRAWN BY: GAB	ISSUE DATE: 15 DEC 14

REVISIONS:

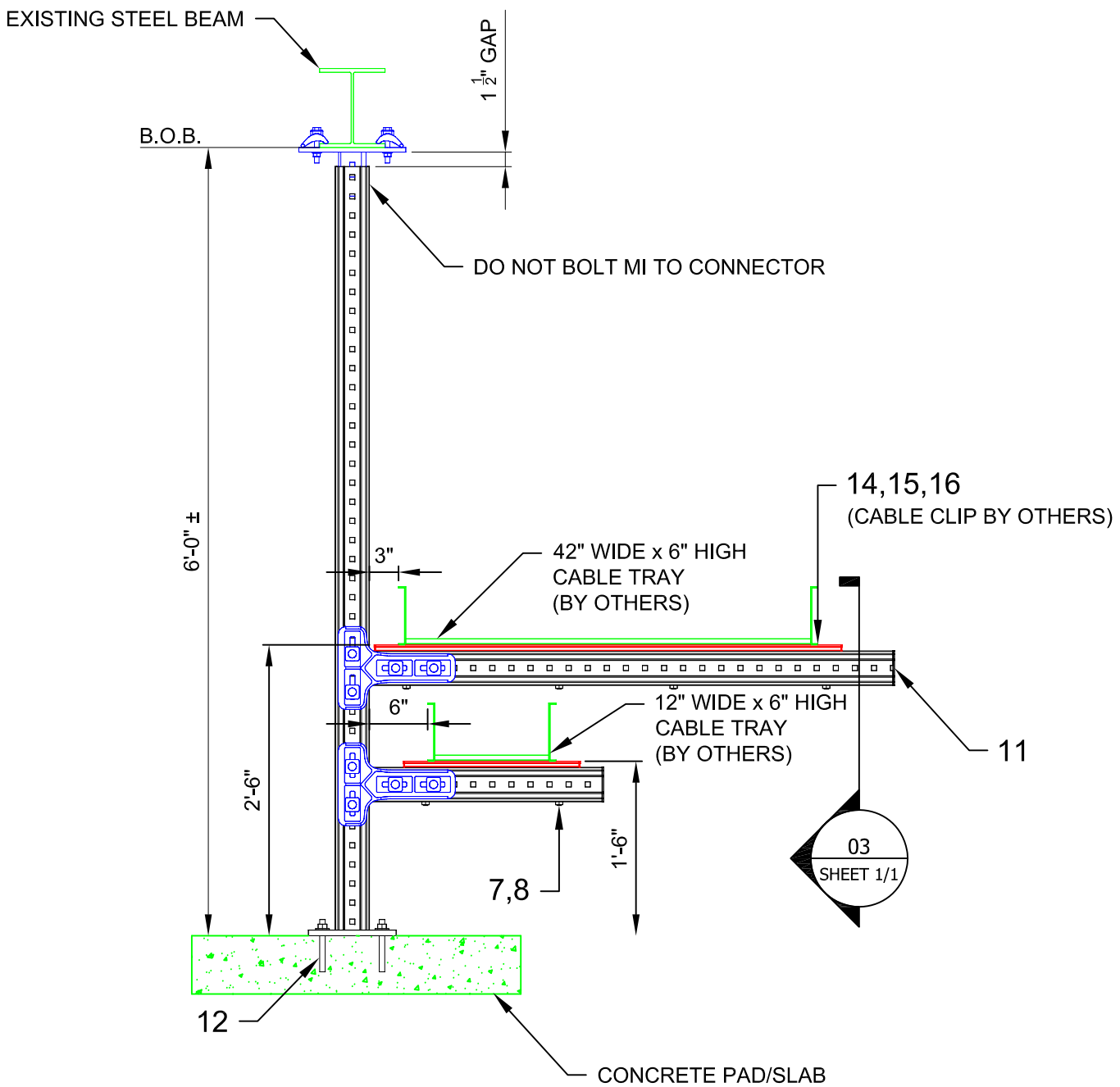
NO.	DESCRIPTION:	DATE:
A	ORIGINAL ISSUE	15 DEC 14

TYPICAL DETAIL NOMENCLATURE:
CT-F10-C_S

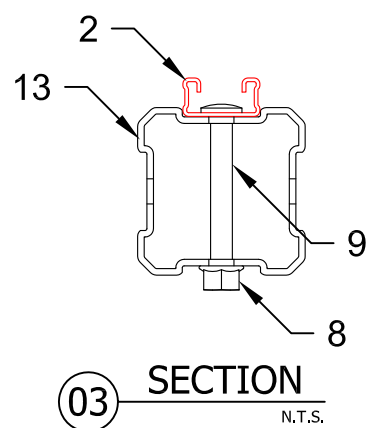
DRAWING NUMBER: 01	SHEET: 1/1
------------------------------	----------------------



01 ISOMETRIC
N.T.S.



02 ELEVATION
N.T.S.



03 SECTION
N.T.S.

DESIGN LOADING CRITERIA
 WEIGHT OF EACH CABLE TRAY = 64 lb/ft MAX.
 *WIND PRESSURE = 72 psf (PER ASCE 7-10).

- NOTE(S):**
1. PRELIMINARY NOT FOR CONSTRUCTION
 2. MAX. SUPPORT SPACING = 13'-0".
 - *3. WIND CONSIDERED ONLY TRANSVERSELY TO CABLE TRAY (NO DIAGONAL WIND CONSIDERED).

No.	Unit Qty	Unit	Description	Box Qty	# Boxes Needed	Item No.
1	1	EA	CONNECTOR MIC-C90-D-2000 WELDED BRACKET	1	1	267793
2	AS REQ'D	EA	STRUT MS-1316-12/HDG 9'-10" (3M)	1	AS REQ'D	407569
3	1	EA	CONNECTOR MIC-S90-A STEEL	2	1	304812
4	2	PR	CONNECTOR MIC-90-LH (#2048107)	3	1	SPECIAL
5	4	EA	BEAM CLAMP MI-SGC-M12	16	1	233859
6	8	EA	TOOTHED PLATE MIA-TP	20	1	305707
7	8	EA	EASYHAND SCREW MIA-EH90	10	1	304887
8	14	EA	MI HEX NUT M12-F-SL-WS 3/4"	100	1	382897
9	6	EA	ONEHAND SCREW MIA-OH90	10	1	304889
10	4	EA	CHANNEL END CAP MEK RED	50	1	244886
11	2	EA	GIRDER END CAP MIA-EC90	25	1	432077
12	4	EA	USE 1/2" Ø KB3 (HDG) AS APPROPRIATE	VARIES	VARIES	VARIES
13	AS REQ'D	EA	GIRDER MI-90 3M	1	AS REQ'D	304798
14	4	EA	WING NUT MQM-F1/2"-F	25	1	304137
15	4	EA	1/2"x1" HEX HEAD BOLT (HDG)	VARIES	-	SPECIAL
16	4	EA	1/2" WASHER (HDG)	VARIES	-	SPECIAL

\\hilti.com\US\TEAMS\installations\Projects\TYPICALS\CABLE TRAY (CT)\CAD\CT-F10-C_S.dwg 12/15/2014 8:48:23 AM