

UL SYSTEM NO. W-L-2583

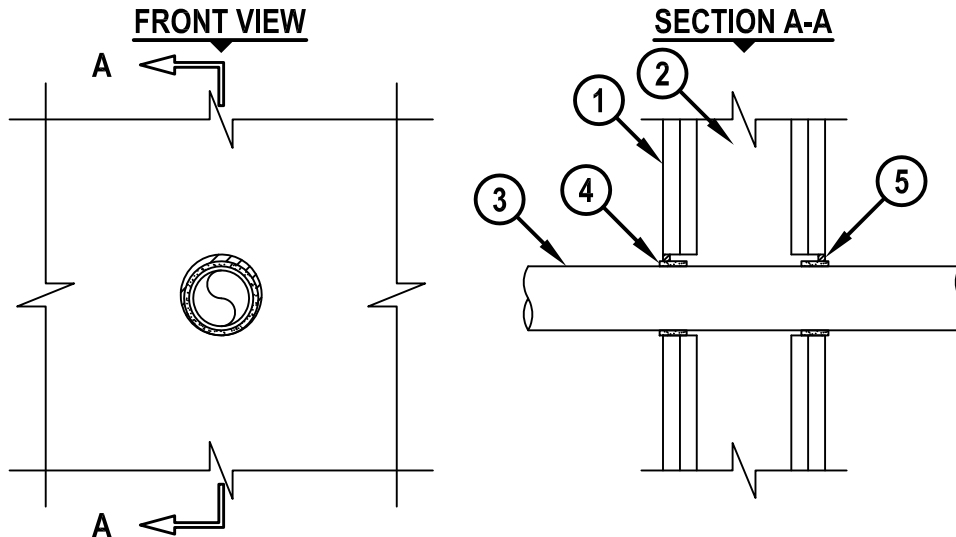
PLASTIC PIPE THROUGH GYPSUM WALL ASSEMBLY

F-RATING = 1-HR. OR 2-HR.

T-RATING = 0-HR. OR 1-1/2-HR.

L-RATING AT AMBIENT = 1.2 CFM / SQ FT

L-RATING AT 400°F = LESS THAN 1 CFM / SQ FT



WL2583b.013115

1. GYPSUM WALL ASSEMBLY (UL CLASSIFIED U300, U400, OR V400 SERIES) (1-HR. OR 2-HR. FIRE-RATING) (2-HR. SHOWN).
2. [NOT SHOWN] WOOD STUDS TO CONSIST OF NOMINAL 2" x 4" LUMBER (SPACED MAXIMUM 16" OC). STEEL STUDS TO BE MINIMUM 3-1/2" WIDE (SPACED MAXIMUM 24" OC).
3. PENETRATING ITEM TO BE ONE OF THE FOLLOWING :
 - A. MAXIMUM 2" NOMINAL DIAMETER PVDF PLASTIC PIPE (SCHEDULE 40) (CLOSED OR VENTED PIPING SYSTEM).
 - B. MAXIMUM 1" NOMINAL DIAMETER PP PLASTIC PIPE (SCHEDULE 80) (CLOSED PIPING SYSTEM ONLY).
4. HILTI CP 648E WRAP STRIP (NOMINAL 3/16" THICK x 1" WIDE) CONTINUOUSLY WRAPPED AROUND THE OUTER CIRCUMFERENCE OF THE PIPE, AS SPECIFIED IN THE TABLE BELOW, AND ENDS HELD IN PLACE WITH TAPE. WRAP STRIP TO BE EXTEND APPROXIMATELY 1/8" BEYOND THE WALL SURFACE ON EACH SIDE OF WALL.
5. MINIMUM 1/4" DEPTH HILTI FS-ONE MAX OR FS-ONE INTUMESCENT FIRESTOP SEALANT.

NOMINAL PIPE DIAMETER	PIPE TYPE	MAX. DIA. OPENING	ANNULAR SPACE	
			MIN.	MAX.
1"	PP, PVDF	2"	3/16"	1/2"
1-1/2"	PVDF	2-3/8"	3/16"	7/16"
2"	PVDF	3"	3/16"	7/16"

NOTE : AS AN ALTERNATE TO HILTI CP 648E WRAP STRIP, HILTI CP 648S/1.5" OR CP 648S/2" WRAP STRIP MAY BE USED ON 1-1/2" OR 2" PIPES RESPECTIVELY.



HILTI, Inc.
Tulsa, Oklahoma USA (800) 879-8000

Sheet	1 of 1
Scale	9/64" = 1"
Date	Jan. 31, 2015

Drawing No.
**WL
2583b**

Saving Lives through Innovation and Education