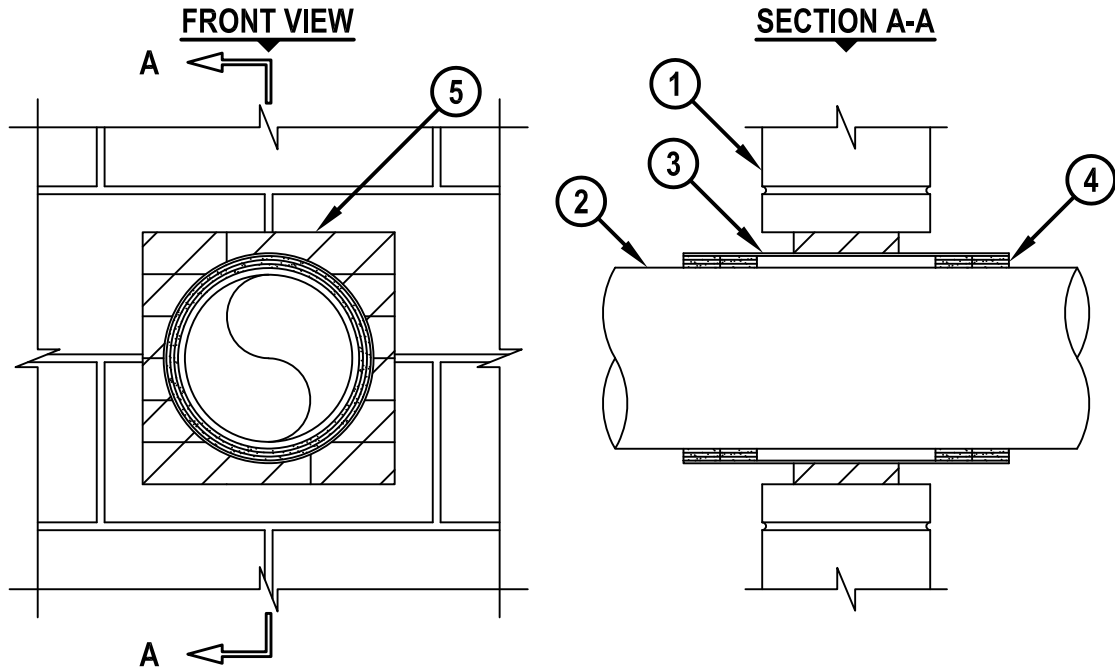


PLASTIC PIPE THROUGH CONCRETE WALL OR CONCRETE BLOCK WALL ASSEMBLY

F-RATING = 2-HR.
T-RATING = 1-1/2-HR.

WJ2255e.041818



1. CONCRETE WALL ASSEMBLY (2-HR. FIRE-RATING) :
 - A. LIGHTWEIGHT OR NORMAL WEIGHT CONCRETE WALL (MINIMUM 6" THICK).
 - B. ANY UL CLASSIFIED CONCRETE BLOCK WALL (SOLID OR GROUT FILLED).
2. MAXIMUM 8" NOMINAL DIAMETER HIGH DENSITY POLYETHYLENE (HDPE) PLASTIC PIPE (SDR 11) (CLOSED PIPING SYSTEM ONLY).
3. SHEET METAL SLEEVE (MIN. 30 GA.) HAVING A 2" LAP ALONG LONGITUDINAL SEAM. LENGTH OF SLEEVE TO EXTEND 3-1/4" TO 3-3/4" BEYOND EACH SURFACE OF WALL AND SECURED TOGETHER WITH FOUR NO. 8 SHEET METAL SCREWS ON EACH END OF SLEEVE.
4. HILTI CP 648E WRAP STRIP (NOMINAL 3/16" x 1-3/4" WIDE) CONTINUOUSLY WRAPPED AROUND THE OUTER CIRCUMFERENCE OF THE PIPE, COVERING THREE TIMES, WITH ENDS BUTTED AND HELD IN PLACE WITH TAPE. TWO SETS OF WRAP STRIP INSTALLED WITHIN THE STEEL SLEEVE ON EACH SIDE OF THE WALL.
5. HILTI CFS-BL FIRESTOP BLOCK (2" THICK x 8" WIDE x 5" DEEP, REFERENCE : FRONT VIEW) FIRMLY PACKED AROUND SLEEVE AND CENTERED WITHIN OPENING.

NOTES : 1. MAXIMUM AREA OF OPENING = 144 SQ. IN., WITH A MAXIMUM DIMENSION OF 12".
 2. ANNULAR SPACE = MINIMUM 1-1/4".
 3. APPLY HILTI FS-ONE MAX INTUMESCENT FIRESTOP SEALANT, HILTI CP 618 FIRESTOP PUTTY STICK, HILTI CP 620 FIRE FOAM, OR HILTI CP 660 FIRESTOP FOAM INTO ANY VOID THAT MAY EXIST (AROUND PENETRANT, BETWEEN FIRESTOP BLOCKS) TO MAXIMUM EXTENT POSSIBLE.



HILTI, Inc.
Plano, Texas USA (800) 879-8000

Sheet	1 of 1
Scale	7/64" = 1"
Date	Apr. 18, 2018

Drawing No.
WJ
2255e