

UL SYSTEM NO. W-J-1245

ALUMINUM PIPE THROUGH CONCRETE OR BLOCK WALL ASSEMBLY

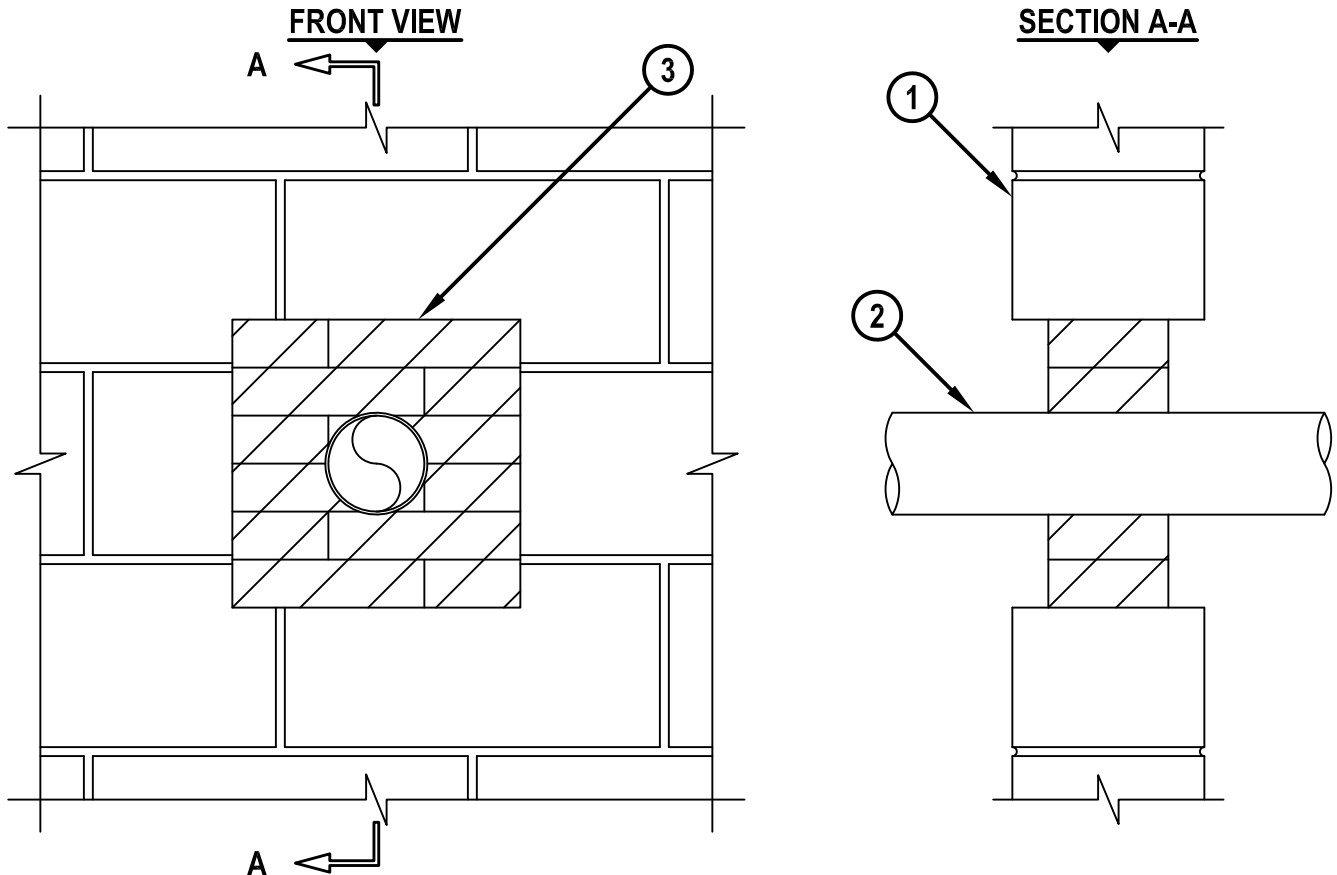
F-RATING = 2-HR.

T-RATING = 1/4-HR.

L-RATING AT AMBIENT = 5 CFM / SQ FT

L-RATING AT 400°F = 2 CFM / SQ FT

WJ1245c.020916



1. CONCRETE WALL ASSEMBLY (2-HR. FIRE-RATING) :
 - A. LIGHTWEIGHT OR NORMAL WEIGHT CONCRETE WALL (MINIMUM 6" THICK).
 - B. ANY UL CLASSIFIED CONCRETE BLOCK WALL (SOLID OR GROUT FILLED).
2. MAXIMUM 4" NOMINAL DIAMETER ALUMINUM TUBE (MIN. 0.125" THICK) (CLOSED PIPING SYSTEM ONLY).
3. HILTI CFS-BL FIRESTOP BLOCK (2" THICK x 8" WIDE x 5" DEEP, REFERENCE : FRONT VIEW) FIRMLY PACKED AND CENTERED WITHIN OPENING.

NOTES : 1. MAXIMUM SIZE OF OPENING = 12" x 12".
2. ANNULAR SPACE = MINIMUM 3".
3. APPLY HILTI FS-ONE MAX INTUMESCENT FIRESTOP SEALANT, HILTI CP 618 FIRESTOP PUTTY STICK, HILTI CP 620 FIRE FOAM, OR HILTI CP 660 FIRESTOP FOAM INTO ANY VOID THAT MAY EXIST (AROUND PENETRANTS, OR BETWEEN FIRESTOP BLOCKS) TO MAXIMUM EXTENT POSSIBLE.
4. L-RATINGS APPLY ONLY WHEN FS-ONE MAX IS USED.



HILTI, Inc.
Plano, Texas USA (800) 879-8000

Sheet	1 of 1
Scale	1/8" = 1"
Date	Feb. 09, 2016

Drawing No.
WJ
1245c

Saving Lives through Innovation and Education