

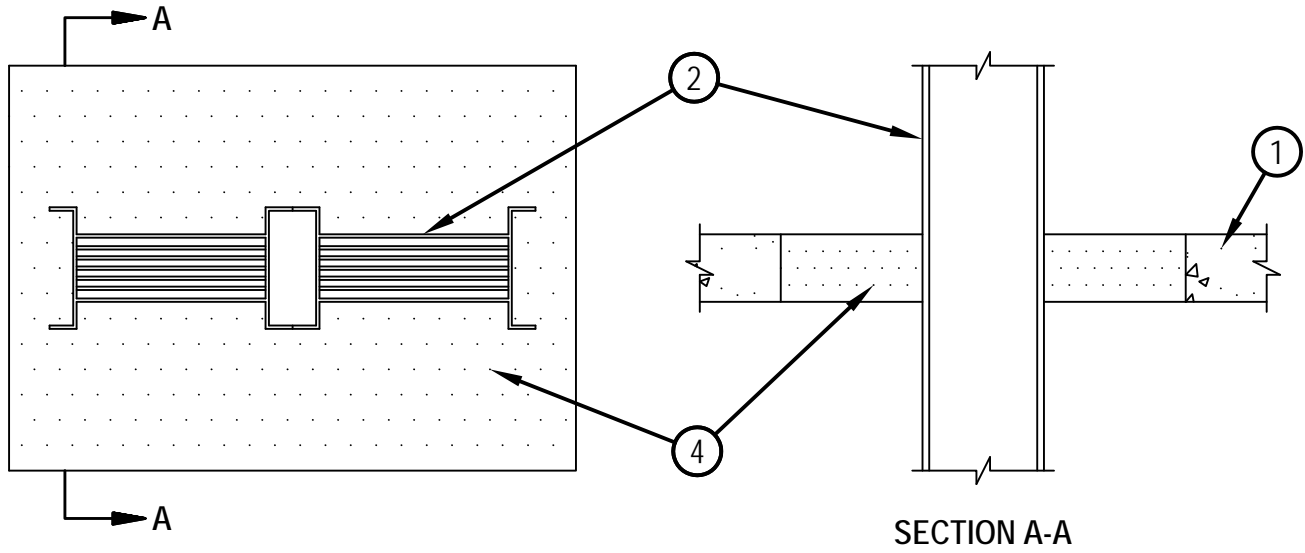


Classified by
Underwriters Laboratories, Inc.
to UL 1479 and CAN/ULC-S115

System No. C-AJ-6006

F Rating -- 3 Hr
T Rating -- 0 Hr

CAJ 6006



1. Floor or Wall Assembly — Min 2-1/2 in. thick reinforced lightweight or normal weight (100-150 pcf) concrete. Wall may also be constructed of any UL Classified Concrete Blocks*. Max area of opening is 560 sq in. with max dimension of 28 in.
See Concrete Blocks (CAZT) category in the Fire Resistance Directory for names of manufacturers.
2. Busway+ — Nom 23 in. wide (or smaller) by 4.5 in. deep (or smaller) "I" shaped aluminum enclosure containing factory mounted aluminum bars rated for 600 V, 4000 A or copper bars rated for 600V, 5000A. The busway shall bear the UL Listing Mark and shall be installed in accordance with all provisions of Article 364 of the National Electrical Code, NFPA No. 70. The annular space between the busway and the periphery of the opening shall be a min of 1 in.
3. Forms — (Not Shown) — Used as a form to prevent leakage of fill material during installation. Forms to be a rigid sheet material, cut to fit the contour of the penetrating item and positioned as required to accommodate the required thickness of fill material. Forms may be removed after fill material has cured.
4. Fill, Void or Cavity Material* — Mortar — Min 2-1/2 in. thickness of fill material applied within the annulus. Fill material mixed at a rate of 2.5 parts dry mix to one part water by weight in accordance with the installation instructions supplied with fill material.
HILTI CONSTRUCTION CHEMICALS, DIV OF
HILTI INC — CP636 or CP637

*Bearing the UL Classification Marking

+Bearing the UL Listing Mark



Hilti Firestop Systems

Reproduced by HILTI, Inc. Courtesy of
Underwriters Laboratories, Inc.
March 19, 2012