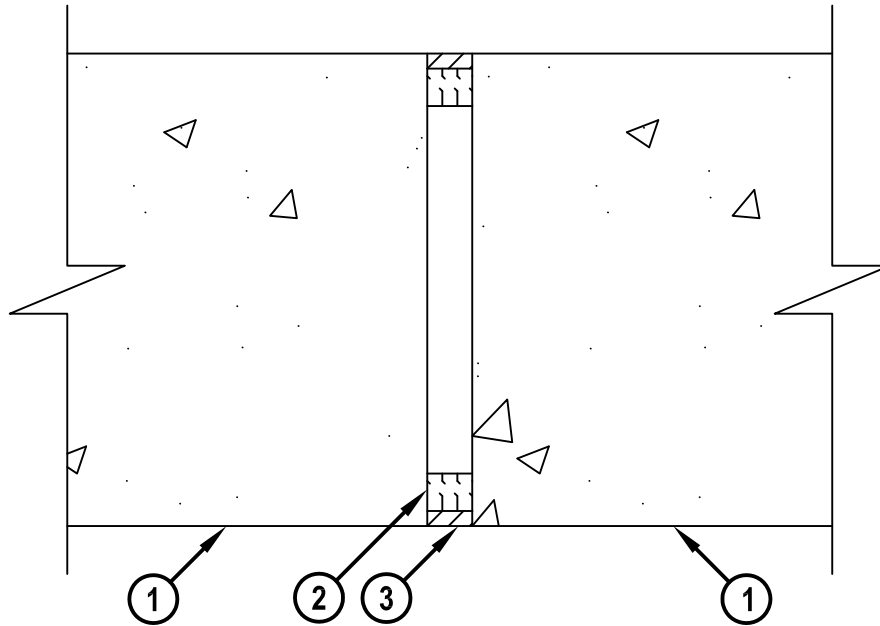


WALL TO WALL JOINT : CONCRETE WALL OR BLOCK WALL ASSEMBLY

ASSEMBLY RATING = 2-HR.

CLASS II MOVEMENT CAPABILITIES - 17% COMPRESSION OR EXTENSION

TOP VIEW



WWD0082a.081808

1. CONCRETE WALL ASSEMBLY (2-HR. FIRE-RATING) :

A. LIGHTWEIGHT OR NORMAL WEIGHT CONCRETE WALL (MINIMUM 7-7/8" THICK).

B. ANY UL/cUL CLASSIFIED CONCRETE BLOCK WALL.

2. HILTI CP 767 SPEED STRIPS (5/8" THICKNESS) COMPRESSED 25% AND INSERTED INTO JOINT, RECESSED TO ACCOMMODATE SEALANT (SEE NOTE NO. 2 BELOW).

3. MINIMUM 1/4" DEPTH HILTI CP 606 FLEXIBLE FIRESTOP SEALANT.

NOTES : 1. MAXIMUM WIDTH OF JOINT = 3/4".

2. AS AN ALTERNATE TO HILTI CP 767 SPEED STRIPS, MINIMUM 5/8" THICKNESS MINERAL WOOL (MIN. 4 PCF DENSITY) COMPRESSED 25% MAY BE USED.



Hilti Firestop Systems

HILTI, Inc.
Tulsa, Oklahoma USA (800) 879-8000

Sheet	1 of 1
Scale	3/8" = 1"
Date	Aug. 18, 2008

Drawing No.

**WWD
0082a**

Saving Lives through Innovation and Education