

WALL TO WALL JOINT : CONCRETE WALL OR BLOCK WALL ASSEMBLY

ASSEMBLY RATING = 1-HR., 2-HR., OR 3-HR.

CLASS II MOVEMENT CAPABILITIES - 12.5% COMPRESSION OR EXTENSION

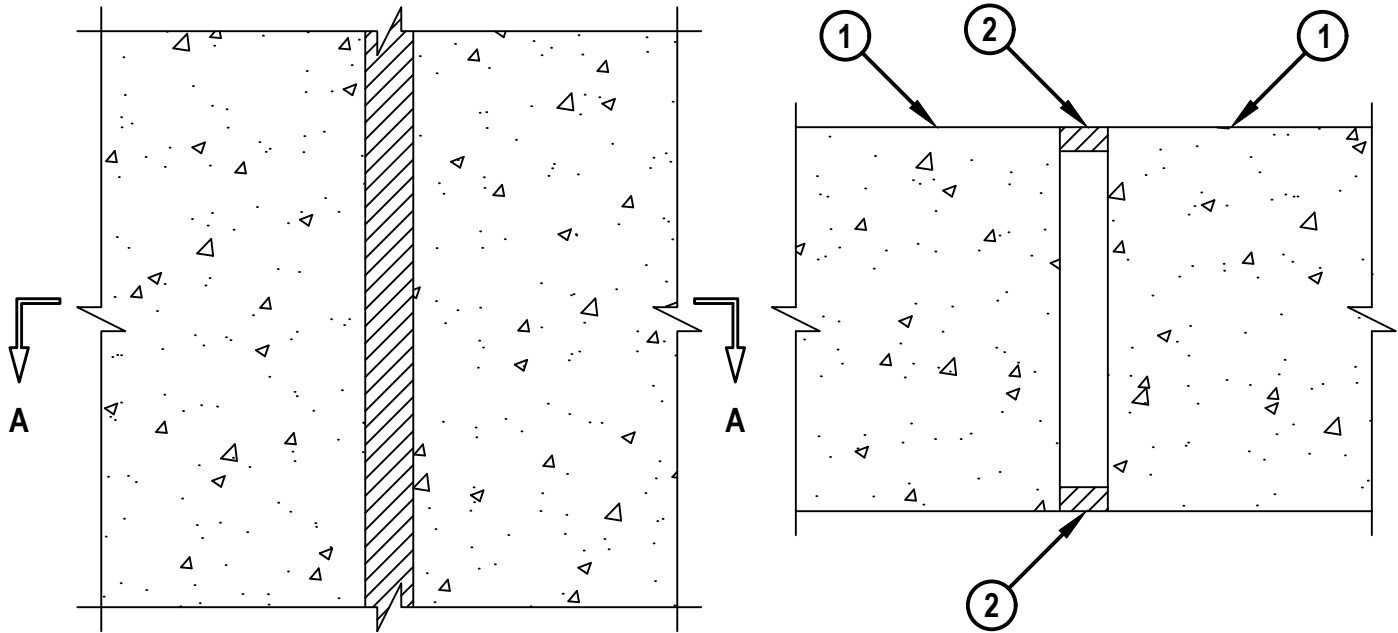
L-RATING AT AMBIENT = LESS THAN 1 CFM / LIN FT

L-RATING AT 400°F = LESS THAN 1 CFM / LIN FT

WWD0032g.121120

FRONT VIEW

SECTION A-A



1. CONCRETE WALL ASSEMBLY (1-HR., 2-HR., OR 3-HR. FIRE-RATING) :
 - A. LIGHTWEIGHT OR NORMAL WEIGHT CONCRETE WALL (MIN. 4-1/2" THICK) (1-HR OR 2-HR FIRE-RATING ONLY).
 - B. LIGHTWEIGHT OR NORMAL WEIGHT CONCRETE WALL (MIN. 8" THICK) (UP TO 3-HR FIRE-RATING).
 - C. ANY UL/cUL CLASSIFIED CONCRETE BLOCK WALL.
2. HILTI CP 606 FLEXIBLE FIRESTOP SEALANT :
 - A. MINIMUM 1/4" DEPTH OF SEALANT FOR A 1-HR. OR 2-HR. FIRE-RATING.
 - B. MINIMUM 1/2" DEPTH OF SEALANT FOR A 3-HR. FIRE-RATING.

NOTES : 1. MAXIMUM WIDTH OF JOINT = 1".
 2. [OPTIONAL] [NOT SHOWN] MINERAL WOOL OR POLYURETHANE FOAM BACKER ROD MAY BE USED AS A BACKER FOR FIRESTOP SEALANT.



HILTI, Inc.
 Plano, Texas USA (800) 879-8000

Sheet	1 of 1
Scale	1/4" = 1"
Date	Dec. 11, 2020

Drawing No.
**WWD
 0032g**