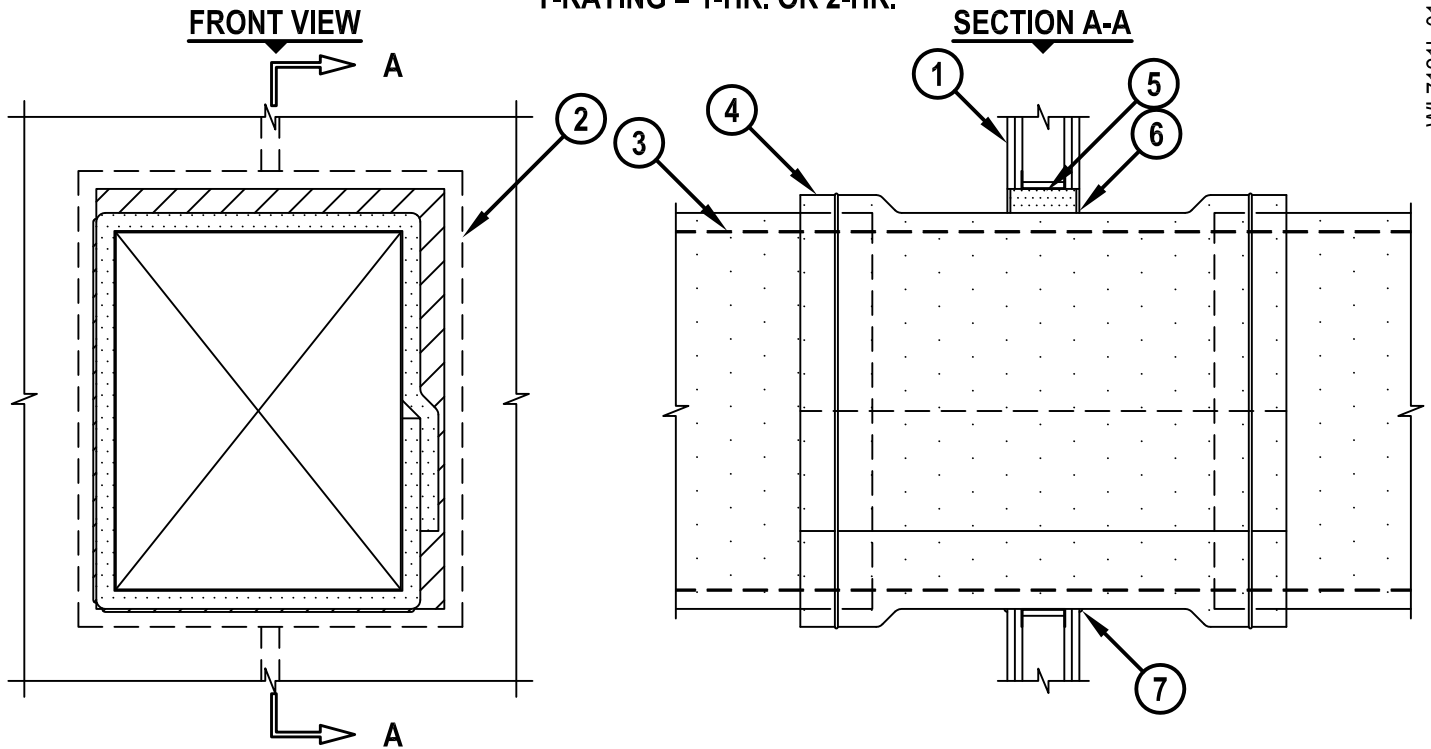


INSULATED DUCT (THERMAL CERAMICS) THROUGH GYPSUM WALL ASSEMBLY

F-RATING = 1-HR. OR 2-HR.
T-RATING = 1-HR. OR 2-HR.

WL7121b.011615



1. GYPSUM WALL ASSEMBLY (UL/cUL CLASSIFIED U300, U400, OR V400 SERIES) (1-HR. OR 2-HR. FIRE-RATING) (2-HR. SHOWN).
2. STEEL STUDS TO BE MINIMUM 3-1/2" WIDE. OPENING TO BE "FRAMED OUT" ON ALL SIDES OF OPENING.
3. PENETRATING ITEM TO BE ONE OF THE FOLLOWING :
 - A. MINIMUM 26 GAUGE GALVANIZED STEEL AIR DUCT HAVING A MAXIMUM PERIMETER OF 108" AND A MAXIMUM INDIVIDUAL DIMENSION OF 30".
 - B. MINIMUM 16 GAUGE CARBON STEEL GREASE DUCT HAVING A MAXIMUM PERIMETER OF 108" AND A MAXIMUM INDIVIDUAL DIMENSION OF 30".
4. NOMINAL 1-1/2" THICK FIREMASTER® FAST WRAP MANUFACTURED BY THERMAL CERAMICS (SEE NOTES NO. 3 AND 4 BELOW).
5. MINIMUM 3-1/2" THICK UNFACED SCRAP DUCT WRAP MATERIAL COMPRESSED 50% INTO OPENING AND RECESSED TO ACCOMMODATE SEALANT.
6. MINIMUM 1/4" DEPTH HILTI FS-ONE MAX OR FS-ONE INTUMESCENT FIRESTOP SEALANT.
7. MINIMUM 1/4" BEAD HILTI FS-ONE MAX OR FS-ONE INTUMESCENT FIRESTOP SEALANT APPLIED AT POINT OF CONTACT.

NOTES : 1. MAXIMUM AREA OF OPENING = 7 SQ. FT., WITH MAXIMUM DIMENSION OF 35".
 2. ANNULAR SPACE = MINIMUM 0", MAXIMUM 2".
 3. GREASE DUCT SHALL BE WRAPPED IN ACCORDANCE WITH GREASE DUCT ASSEMBLY NO. G-14. GREASE DUCT ASSEMBLIES ARE FOR USE IN 2-HR. RATED WALLS ONLY.
 4. AIR DUCT SHALL BE WRAPPED IN ACCORDANCE WITH VENTILATION DUCT ASSEMBLY NO. V-19.



HILTI, Inc.
Tulsa, Oklahoma USA (800) 879-8000

Sheet	1 of 1
Scale	1/16" = 1"
Date	Jan. 16, 2015

Drawing No.
WL 7121b