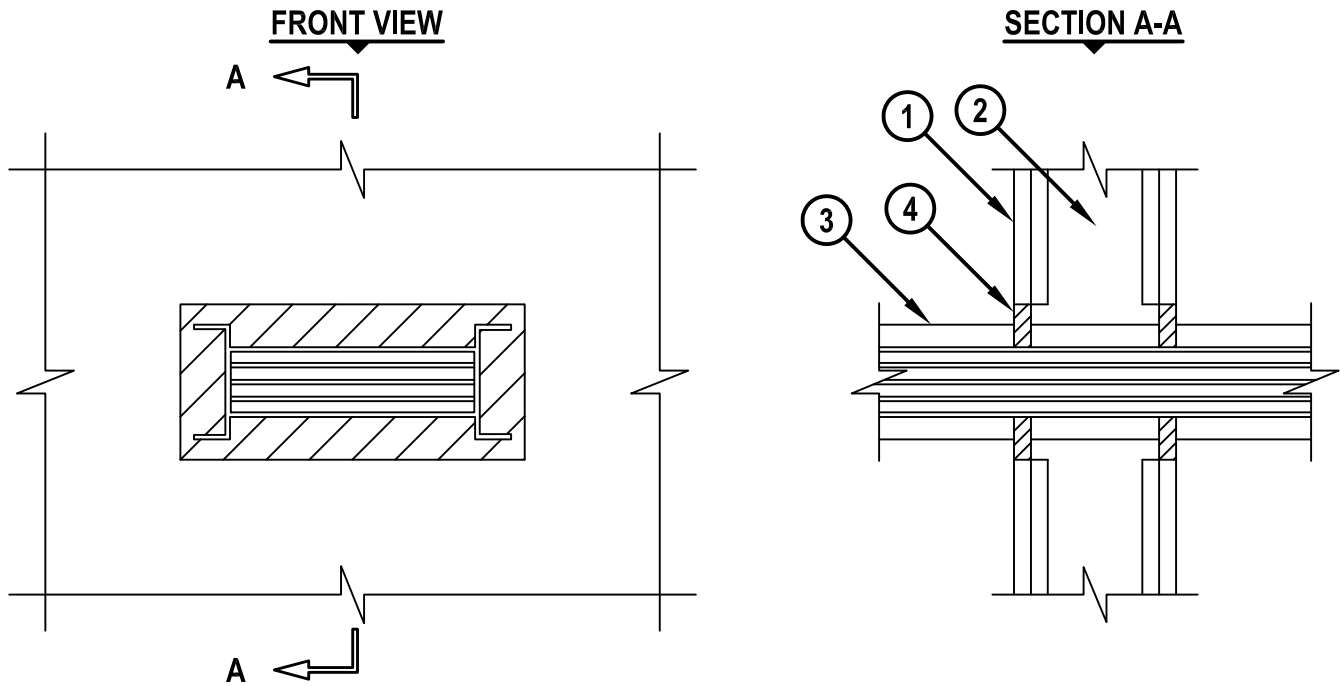


ELECTRICAL BUSWAY THROUGH GYPSUM WALL ASSEMBLY

F-RATING = 1-HR. OR 2-HR.

T-RATING = 1/4-HR.

WL6019c.011415



1. GYPSUM WALL ASSEMBLY (UL/cUL CLASSIFIED U300 OR U400 SERIES) (1-HR. OR 2-HR. FIRE-RATING) (2-HR. SHOWN).
2. WOOD STUDS TO CONSIST OF NOMINAL 2" x 4" LUMBER. STEEL STUDS TO BE MINIMUM 3-5/8" WIDE.
3. ELECTRICAL BUSWAY (NOMINAL 11-1/4" WIDE x 4-1/4" DEEP, OR SMALLER) "I" SHAPED ALUMINUM ENCLOSURE CONTAINING FACTORY MOUNTED ALUMINUM BARS RATED FOR 600V, 4000A, OR COPPER BARS RATED FOR 600V, 5000A.
4. MINIMUM 5/8" DEPTH HILTI FS-ONE MAX OR FS-ONE INTUMESCENT FIRESTOP SEALANT.

NOTES : 1. MAXIMUM SIZE OF OPENING = 12-3/4" x 5-3/4".
 2. ANNULAR SPACE = MINIMUM 1/4", MAXIMUM 1-1/4".



HILTI, Inc.
 Tulsa, Oklahoma USA (918) 252-6000

Sheet	1 of 1
Scale	9/64" = 1"
Date	Jan. 14, 2015

Drawing No.
**WL
 6019c**