

UL/cUL SYSTEM NO. W-L-5244

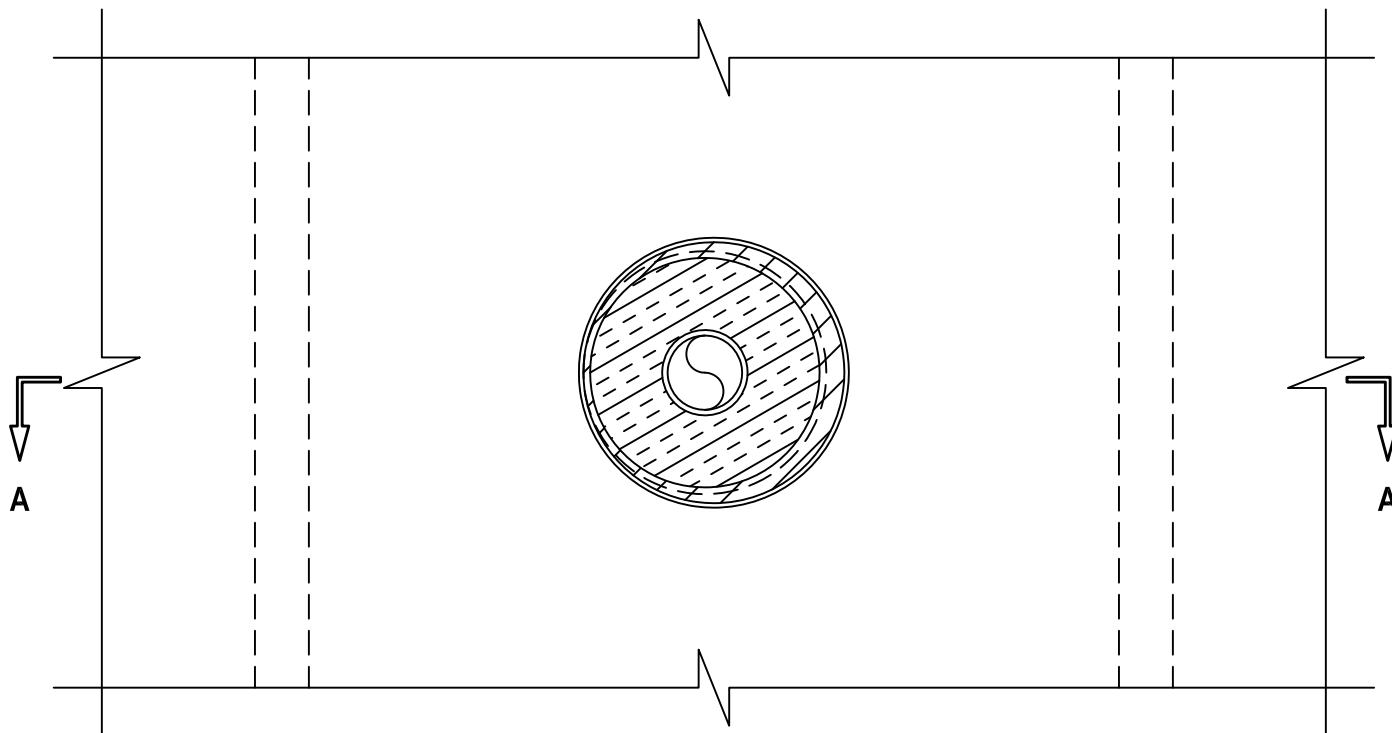
INSULATED METAL PIPE THROUGH GYPSUM SHAFT WALL ASSEMBLY

F-RATING = 2-HR.

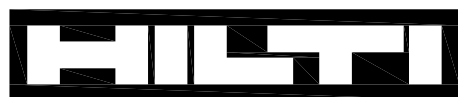
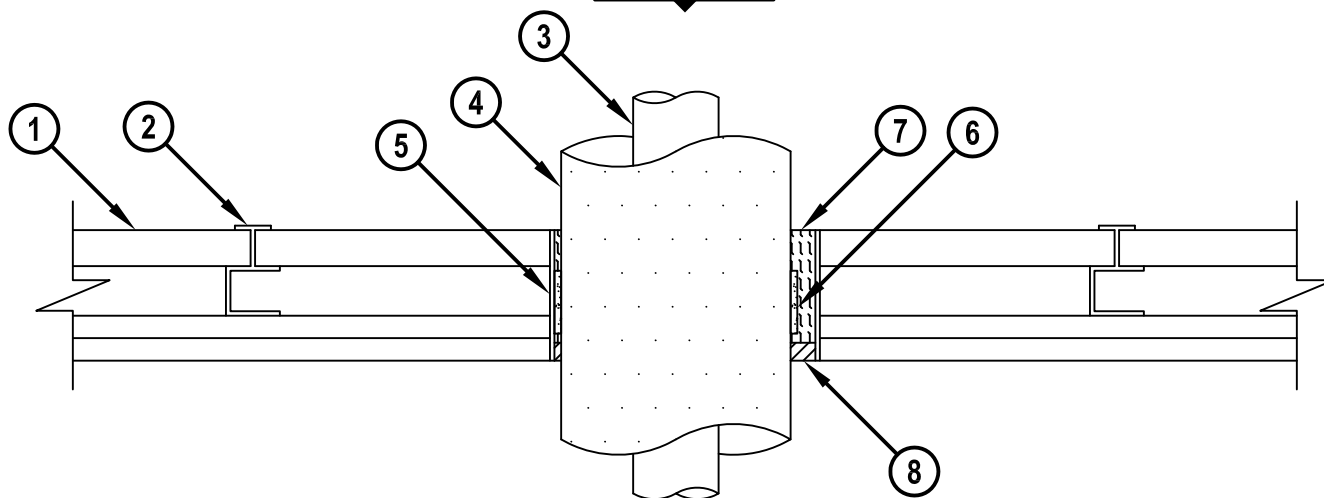
T-RATING = 0-HR. OR 3/4-HR.

FRONT VIEW

WL5244d.011415



SECTION A-A



Hilti Firestop Systems

HILTI, Inc.
Tulsa, Oklahoma USA (800) 879-8000

Sheet 1 of 2

Scale 3/16" = 1"

Date Jan. 14, 2015

Drawing No.

**WL
5244d**

Saving Lives through Innovation and Education

INSULATED METAL PIPE THROUGH GYPSUM SHAFT WALL ASSEMBLY

F-RATING = 2-HR.

T-RATING = 0-HR. OR 3/4-HR.

WL5244d.011415

1. GYPSUM SHAFT WALL ASSEMBLY (UL/cUL CLASSIFIED U400 OR V400 SERIES) (2-HR. FIRE-RATING).
2. "C-T" OR "C-H" SHAPED STEEL STUDS (MIN. 2-1/2" WIDE x 1-1/2" DEEP, MIN. 25 GA.) SPACED MAX. 24" C/C.
3. PENETRATING ITEM TO BE ONE OF THE FOLLOWING :
 - A. MAXIMUM 2" NOMINAL DIAMETER STEEL PIPE (SCHEDULE 5 OR HEAVIER).
 - B. MAXIMUM 2" NOMINAL DIAMETER CAST OR DUCTILE IRON PIPE.
 - C. MAXIMUM 2" NOMINAL DIAMETER COPPER PIPE OR TUBING.
4. MAXIMUM 2" THICK GLASS-FIBER PIPE INSULATION.
5. MAXIMUM 7-1/2" DIAMETER SHEET METAL SLEEVE (MIN. 28 GA.) HAVING A MINIMUM 1" OVERLAP ALONG LONGITUDINAL SEAM.
6. HILTI CP 648E WRAP STRIP (NOMINAL 3/16" THICK x 1-3/4" WIDE) CONTINUOUSLY WRAPPED AROUND THE PIPE INSULATION, COVERING ONE TIME, AND HELD IN PLACE WITH TAPE. WRAP STRIP TO BE RECESSED APPROXIMATELY 3/4" FROM FINISHED SURFACE OF WALL.
7. MINIMUM 3-1/4" THICKNESS MINERAL WOOL (MIN. 4 PCF DENSITY) TIGHTLY PACKED, RECESSED ON ONE SIDE OF WALL TO ACCOMMODATE FIRESTOP SEALANT.
8. MINIMUM 1/2" DEPTH HILTI FS-ONE MAX OR FS-ONE INTUMESCENT FIRESTOP SEALANT.

NOTES :

1. MAXIMUM DIAMETER OF OPENING = 7-1/2".
2. ANNULAR SPACE = MINIMUM 3/16", MAXIMUM 13/16".
3. THIS SYSTEM WAS DESIGNED AND TESTED FOR APPLICATIONS IN WHICH THERE IS LIMITED OR NO ACCESS AVAILABLE ON ONE SIDE OF THE WALL.
4. AS AN ALTERNATE TO THE ABOVE SHAFT WALL ASSEMBLY, A 1 OR 2-HR. GYPSUM WALL ASSEMBLY MAY BE USED (U300, U400 OR V400 SERIES). STEEL STUDS TO BE MINIMUM 2-1/2" WIDE. WOOD STUDS TO CONSIST OF NOMINAL 2 x 4 LUMBER.
5. WHEN SYSTEM IS INSTALLED IN A STANDARD WALL ASSEMBLY, MINERAL WOOL SHOULD BE INSTALLED FLUSH WITH EITHER SIDE OF WALL AND RECESSED FROM OTHER SIDE TO ACCOMMODATE SEALANT.



Hilti Firestop Systems

HILTI, Inc.
Tulsa, Oklahoma USA (800) 879-8000

Sheet 2 of 2

Scale -

Date Jan. 14, 2015

Drawing No.

**WL
5244d**