

SPINE CABLE TRAY THROUGH GYPSUM WALL ASSEMBLY

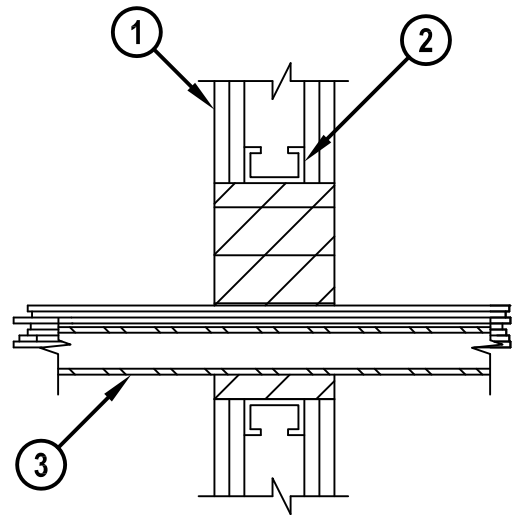
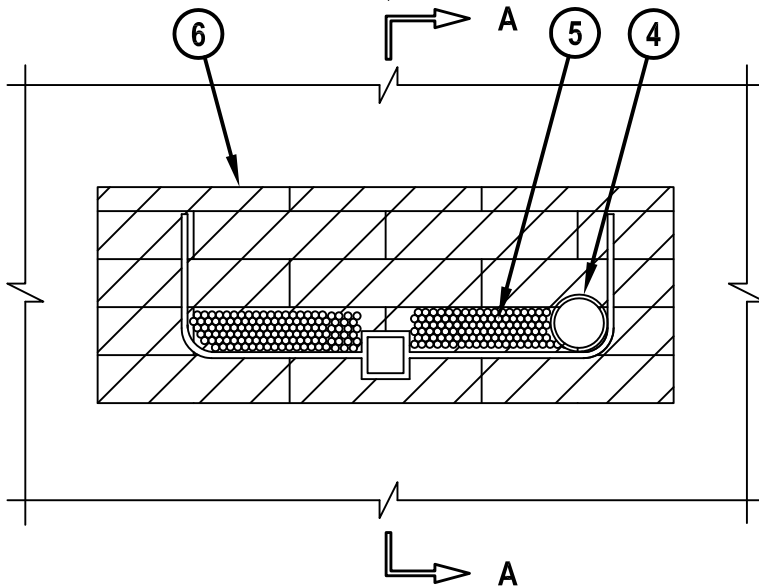
F-RATING = 1-HR. OR 2-HR.

T-RATING = 0-HR.

NOTE : TESTED TO A 2.5 Pa PRESSURE DIFFERENTIAL

FRONT VIEW

SECTION A-A



WL4019e.011415

1. GYPSUM WALL ASSEMBLY (UL/cUL CLASSIFIED U300 OR U400 SERIES) (1-HR. OR 2-HR. FIRE-RATING) (2-HR SHOWN).
2. OPENING TO BE FRAMED OUT WITH METAL STUDS.
3. MAXIMUM 18" x 6" SPINE CABLE TRAY (ALUMINUM OR STEEL).
4. MAXIMUM 2" NOMINAL DIAMETER INNERDUCT (CLOSED SYSTEM ONLY).
5. ANY OF THE FOLLOWING CABLES MAY BE USED WITH CABLE TRAY :
 - A. RG 59 COAXIAL CABLE.
 - B. MAX. 6 PAIR NO. 24 AWG TELEPHONE CABLE.
 - C. DATA-COMMUNICATION CABLE (24 GAUGE MULTIPLE CONNECTOR).
 - D. MAX. 3/C NO. 12 AWG METAL CLAD CABLE.
 - E. 24 FIBER-OPTIC CABLE (MAX. 1/4" DIAMETER).
 - F. MAXIMUM 2/C NO. 12 (+GRND), ROMEX.
6. HILTI CFS-BL FIRESTOP BLOCK OR HILTI FS 657 FIRE BLOCK (2" THICK x 8" WIDE x 5" DEEP, REFERENCE : FRONT VIEW) FIRMLY PACKED WITHIN OPENING. EITHER ONE OR A COMBINATION OF BLOCK TYPES MAY BE USED.

NOTES : 1. MAXIMUM AREA OF OPENING = 216 SQ. IN., WITH A MAXIMUM DIMENSION OF 24".
 2. ANNULAR SPACE = MINIMUM 1", MAXIMUM 4-1/2".
 3. MAXIMUM AREA OF CABLES EQUALS 22% OF CROSS-SECTIONAL AREA OF CABLE TRAY.
 4. APPLY HILTI FS-ONE MAX OR FS-ONE FIRESTOP SEALANT OR HILTI CP 618 FIRESTOP PUTTY STICK INTO INTERSTICES OF CABLES, BETWEEN CABLES AND CABLE TRAY, AND ANY VOIDS TO MAXIMUM EXTENT POSSIBLE.



HILTI, Inc.
 Tulsa, Oklahoma USA (800) 879-8000

Sheet	1 of 1
Scale	1/8" = 1"
Date	Jan. 14, 2015

Drawing No.
**WL
 4019e**