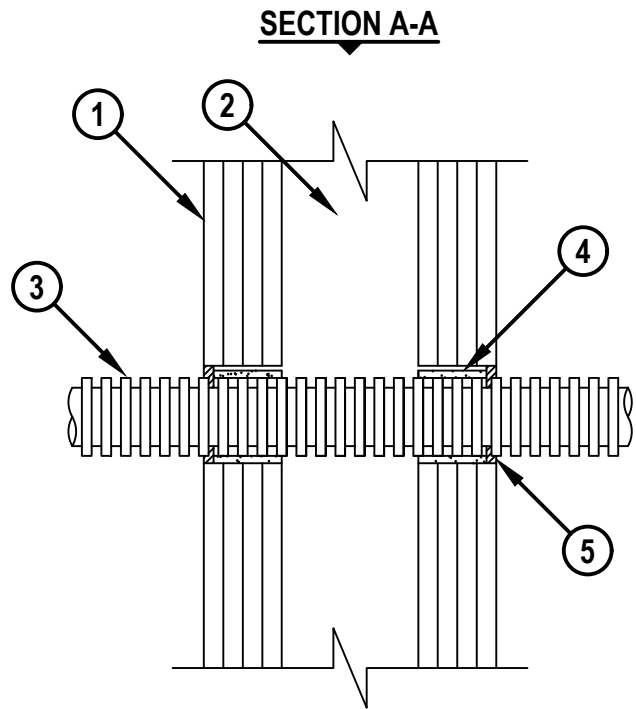
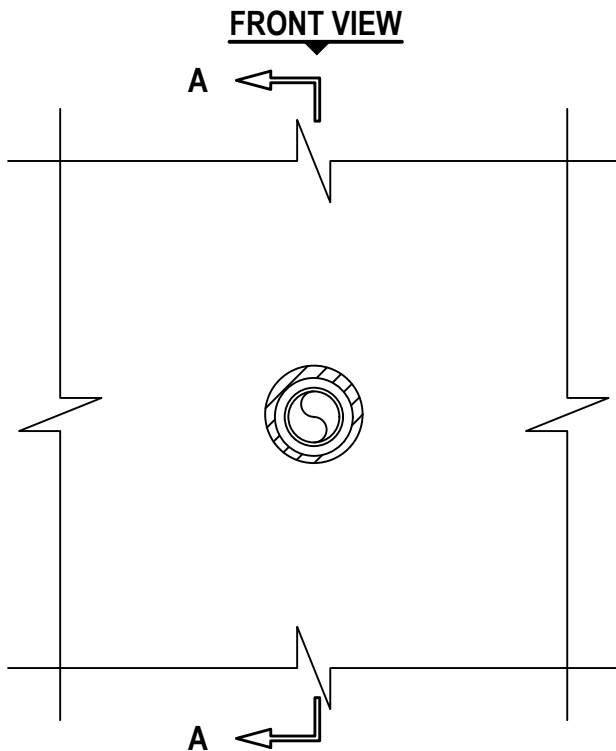


UL SYSTEM NO. W-L-2444
ENT THROUGH GYPSUM WALL ASSEMBLY

F-RATING = 3-HR. OR 4-HR.
 T-RATING = 3-HR. OR 4-HR.

WL2444c.091322



1. GYPSUM WALL ASSEMBLY (UL CLASSIFIED U400 OR V400 SERIES) (3-HR. OR 4-HR. FIRE-RATING) (4-HR. SHOWN).
2. [NOT SHOWN] STEEL STUDS TO BE MINIMUM 3-1/2" WIDE.
3. MAXIMUM 2" NOMINAL DIAMETER ENT (FORMED FROM PVC).
4. HILTI CP 648E FIRESTOP WRAP STRIP (NOMINAL 3/16" x 1-3/4" WIDE) CONTINUOUSLY WRAPPED AROUND THE OUTER CIRCUMFERENCE OF THE PIPE, ONCE, AND HELD IN PLACE WITH ALUMINUM FOIL TAPE. WRAP STRIP RECESSED FROM EACH SURFACE OF WALL TO ACCOMMODATE FIRESTOP SEALANT.
5. MINIMUM 1/4" DEPTH HILTI FS-ONE MAX INTUMESCENT FIRESTOP SEALANT.

NOTES : 1. MAXIMUM DIAMETER OF OPENING = 3".
 2. ANNULAR SPACE = MINIMUM 3/16", MAXIMUM 5/16".

 Hilti Firestop Systems	HILTI, Inc. Plano, Texas USA (800) 879-8000	Sheet 1 of 1	Drawing No. WL 2444c
		Scale 13/64" = 1"	
		Date Sep. 13, 2022	
<i>Saving Lives through Innovation and Education</i>			