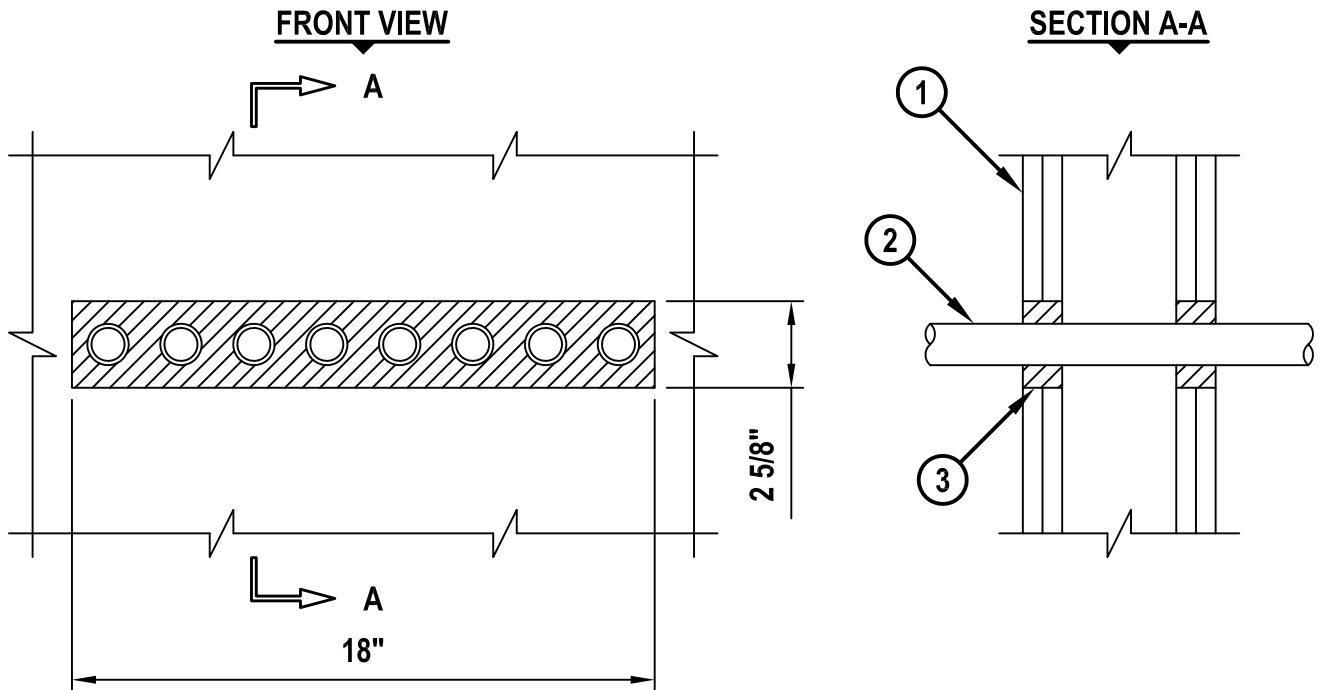


UL/cUL SYSTEM NO. WL1095
METAL PIPE THROUGH GYPSUM WALL ASSEMBLY

F-RATING = 1-HR. OR 2-HR.
 T-RATING = 1-HR. OR 2-HR.
 L-RATING AT AMBIENT = LESS THAN 1 CFM / SQ FT
 L-RATING AT 400° F = 4 CFM / SQ FT

WL1095e.011015



1. GYPSUM WALL ASSEMBLY (UL/cUL CLASSIFIED U300 OR U400 SERIES) (1-HR. OR 2-HR. FIRE-RATING) (2-HR. SHOWN).
2. ONE OR MORE 1" NOMINAL DIAMETER EMT.
3. HILTI FS-ONE MAX OR FS-ONE INTUMESCENT FIRESTOP SEALANT :
 - A. MINIMUM 5/8" DEPTH, FOR A 1-HR. FIRE-RATING.
 - B. MINIMUM 1-1/4" DEPTH, FOR A 2-HR. FIRE-RATING.

NOTE : ANNULAR SPACE = MINIMUM 1/2", MAXIMUM 1".



HILTI, Inc.
 Tulsa, Oklahoma USA (800) 879-8000

Sheet	1 of 1
Scale	11/64" = 1"
Date	Jan. 10, 2015

Drawing No.
WL 1095e