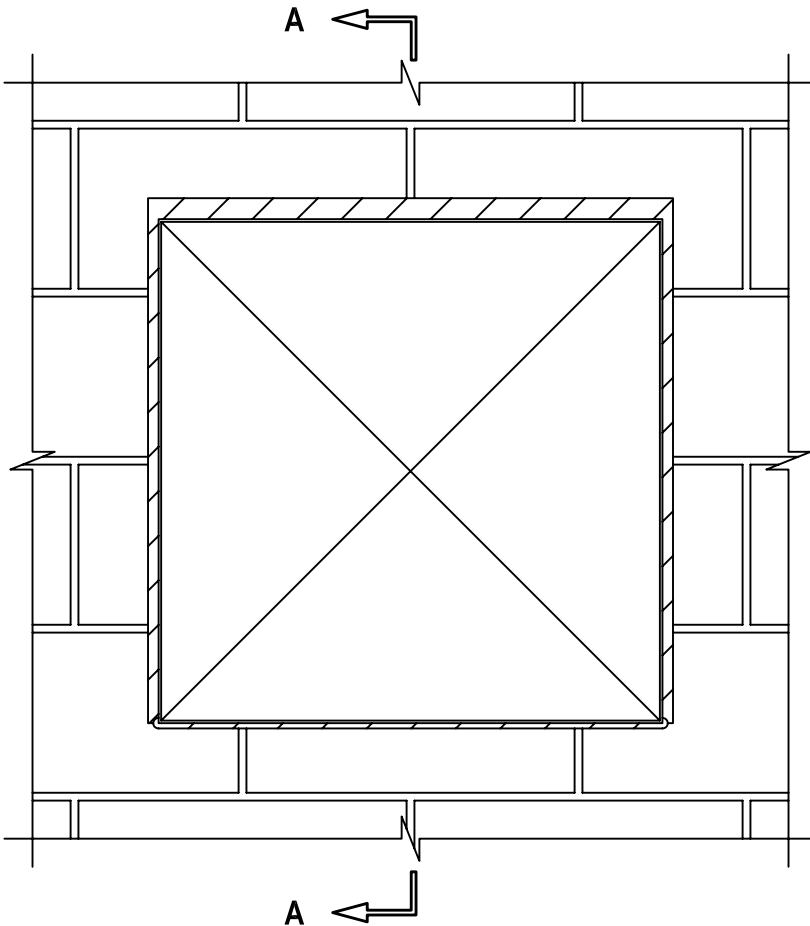


**SHEET METAL DUCT (WITHOUT DAMPER) THROUGH CONCRETE WALL  
OR BLOCK WALL ASSEMBLY**

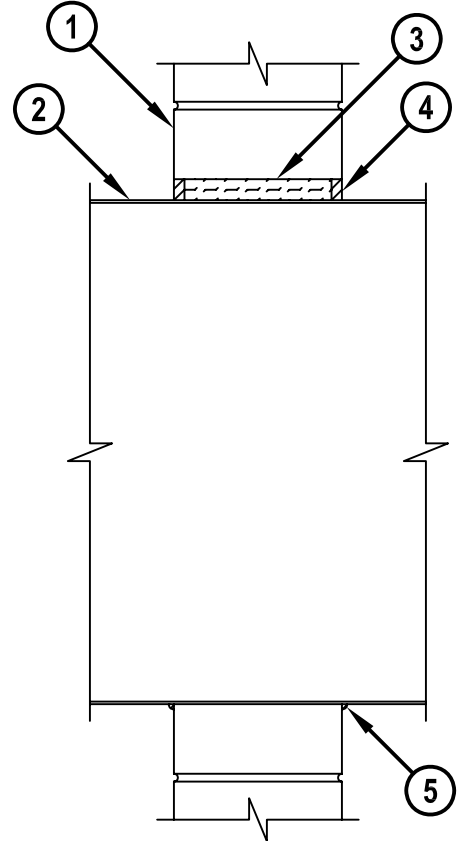
F-RATING = 2-HR.  
T-RATING = 1/2-HR.

WJ7085a.122005

**FRONT VIEW**



**SECTION A-A**



1. CONCRETE WALL ASSEMBLY (2-HR. FIRE-RATING) :
  - A. LIGHTWEIGHT OR NORMAL WEIGHT CONCRETE WALL (MINIMUM 6" THICK).
  - B. ANY UL/cUL CLASSIFIED CONCRETE BLOCK WALL.
2. MAXIMUM 24" x 24" RECTANGULAR SHEET METAL DUCT (MIN. 24 GA.).  
(NOT FOR USE IN DUCT SYSTEMS CONTAINING A FIRE DAMPER.)
3. MINIMUM 5" THICKNESS MINERAL WOOL (MIN. 4 PCF DENSITY) TIGHTLY PACKED INTO OPENING.
4. MINIMUM 1/2" DEPTH HILTI CP 606 FLEXIBLE FIRESTOP SEALANT.
5. MINIMUM 1/4" BEAD HILTI CP 606 FLEXIBLE FIRESTOP SEALANT APPLIED AT POINT OF CONTACT  
(SEE NOTE NO. 3 BELOW).

**NOTES :** 1. MAXIMUM SIZE OF OPENING = 25" x 25".  
 2. ANNULAR SPACE = MINIMUM 1/2", MAXIMUM 1".  
 3. FOR 2-HR. FIRE-RATED WALLS ONLY, SHEET METAL DUCT MAY HAVE 0" ANNULAR SPACE AT THE BOTTOM OF THE DUCT.



HILTI, Inc.  
Tulsa, Oklahoma USA (918) 252-6000

|       |               |
|-------|---------------|
| Sheet | 1 of 1        |
| Scale | 7/64" = 1"    |
| Date  | Dec. 20, 2005 |

Drawing No.

**WJ  
7085a**