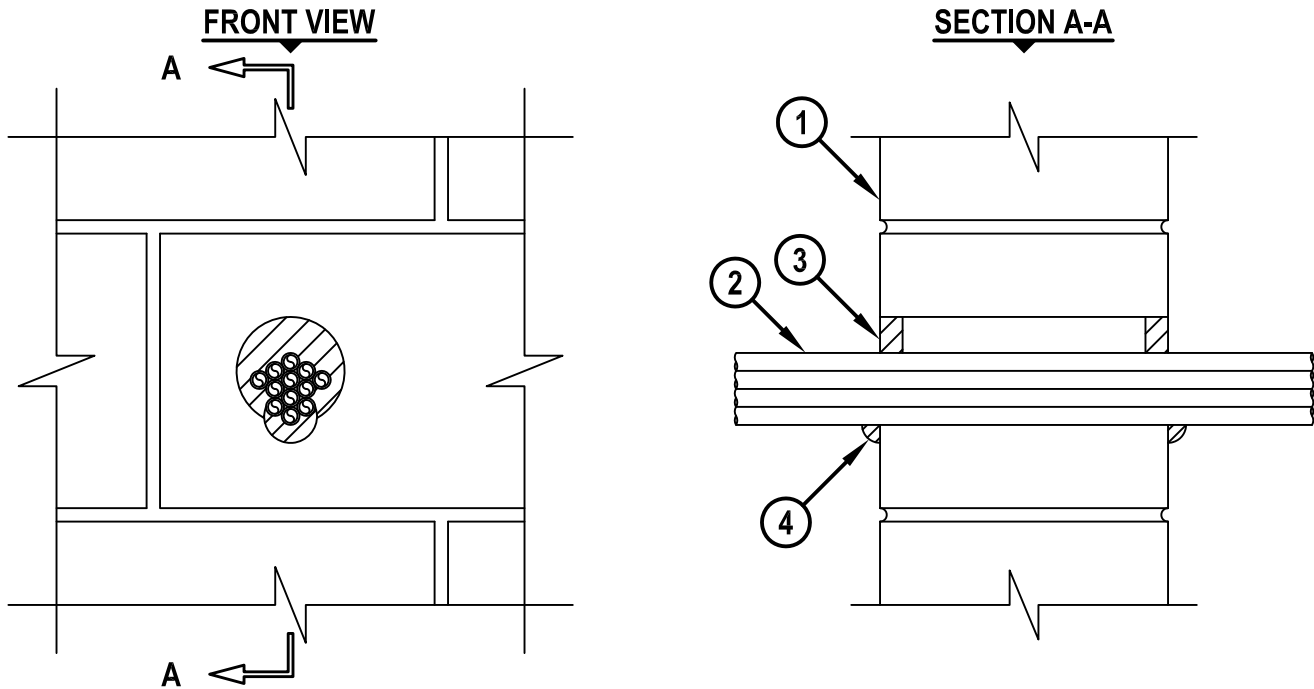


UL SYSTEM NO. W-J-2237

**MULTIPLE PLASTIC PIPE THROUGH CONCRETE WALL OR  
CONCRETE BLOCK WALL ASSEMBLY**

F-RATING = 2-HR.  
T-RATING = 2-HR.

WJ2237b.010915



1. CONCRETE FLOOR ASSEMBLY (2-HR. FIRE-RATING) :
  - A. LIGHTWEIGHT OR NORMAL WEIGHT CONCRETE WALL (MINIMUM 6" THICK).
  - B. ANY UL/cUL CLASSIFIED CONCRETE BLOCK WALL.
2. ONE OR MORE MAXIMUM 1/2" DIAMETER DURA-LINE MICRO DUCT (MINIMUM 0.057" WALL THICKNESS) MANUFACTURED BY A-D TECHNOLOGIES (CLOSED PIPING SYSTEM) (MAX. QTY. = 12, TIGHTLY BUNDLED OR INDIVIDUALLY SEPARATED).
3. MINIMUM 5/8" DEPTH HILTI FS-ONE MAX OR FS-ONE INTUMESCENT FIRESTOP SEALANT.
4. MINIMUM 1/2" BEAD HILTI FS-ONE MAX OR FS-ONE INTUMESCENT FIRESTOP SEALANT APPLIED AT POINT OF CONTACT.

NOTES : 1. MAXIMUM DIAMETER OF OPENING = 3".  
2. ANNULAR SPACE = MINIMUM 0", MAXIMUM 1".



HILTI, Inc.  
Tulsa, Oklahoma USA (800) 879-8000

Sheet	1 of 1
Scale	3/16" = 1"
Date	Jan. 09, 2015

Drawing No.  
**WJ  
2237b**

*Saving Lives through Innovation and Education*