

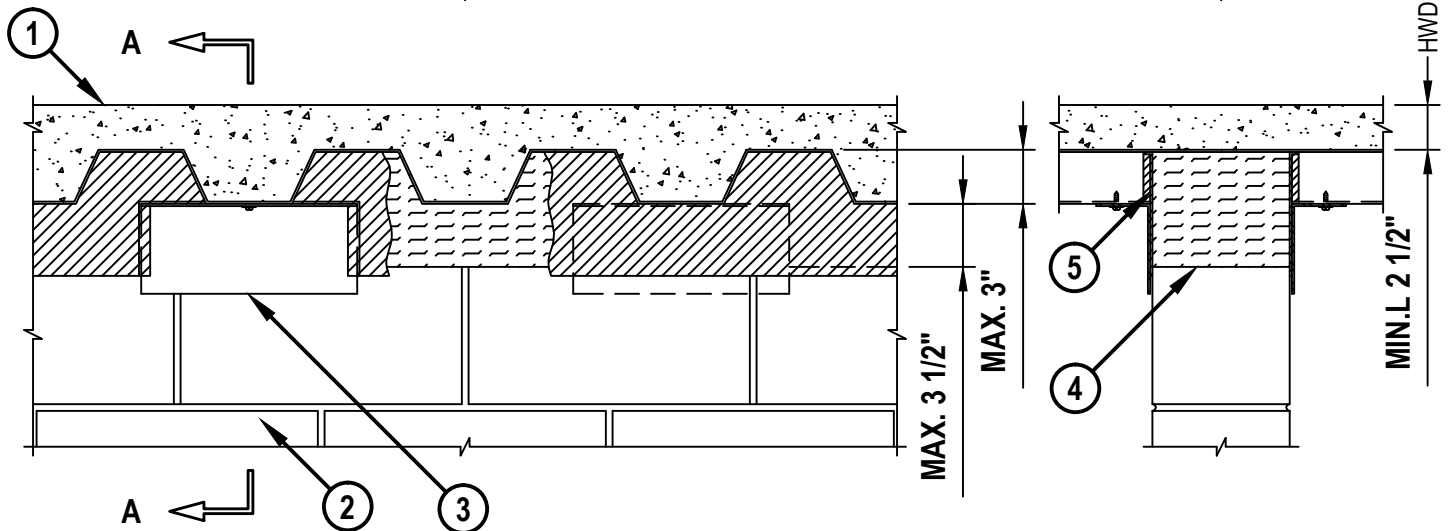
TOP OF WALL JOINT : CONCRETE BLOCK WALL ASSEMBLY

ASSEMBLY RATING = 2-HR.

CLASS II MOVEMENT CAPABILITIES - 14% COMPRESSION OR EXTENSION

FRONT VIEW

SECTION A-A



1. FLOOR OR ROOF ASSEMBLY (2-HR. FIRE-RATING) :
 - A. LIGHT WEIGHT OR NORMAL WEIGHT CONCRETE FLOOR (MIN. 2-1/2" THICK) OVER METAL DECKING (UL/cUL CLASSIFIED D700 OR D900 SERIES).
 - B. [NOT SHOWN] FLUTED STEEL ROOF DECK WITH SPRAY-APPLIED FIREPROOFING (UL/cUL CLASSIFIED P700 SERIES).
2. CONCRETE WALL ASSEMBLY (2-HR. FIRE-RATING) :
 - A. LIGHTWEIGHT OR NORMAL WEIGHT CONCRETE WALL (MINIMUM 8" THICK).
 - B. ANY UL/cUL CLASSIFIED CONCRETE BLOCK WALL.
3. STEEL ANGLES (MAXIMUM SIZE : 5" x 3" x 12 GA., OR THICKER) CUT MAXIMUM 12" LONG AND FASTENED TO METAL DECK AT MINIMUM 24" C/C. STEEL ANGLES TO BE STAGGERED ON OPPOSITE SIDE OF WALL.
4. MINIMUM 8" THICKNESS MINERAL WOOL SAFING (MIN. 4 PCF DENSITY) COMPRESSED 50% AND INSERTED INTO JOINT, BEHIND STEEL ANGLES AND INTO FLUTE.
5. MINIMUM 1/8" (WET) THICKNESS HILTI CFS-SP WB FIRESTOP JOINT SPRAY TO COMPLETELY COVER MINERAL WOOL AND TO OVERLAP MINIMUM 1/2" ONTO BLOCK WALL, STEEL ANGLES, AND METAL DECK ON BOTH SIDES OF WALL ASSEMBLY.

NOTES :

1. MAXIMUM WIDTH OF JOINT = 3-1/2".
2. STEEL FLOOR UNITS MAY BE SPRAYED WITH A MINIMUM 5/16" THICKNESS TO MAXIMUM 1-3/4" THICKNESS OF UL CLASSIFIED MONOKOTE TYPE MK-6/HY FIREPROOFING MANUFACTURED BY W.R. GRACE & CO.
3. WHEN THE STEEL DECK IS COATED WITH FIREPROOFING, HILTI FIRESTOP SPRAY SHALL OVERLAP THE WALL MIN. 1/2" AND OVERLAP THE FIREPROOFING MINIMUM 2", ON BOTH SIDES OF THE WALL.



HILTI, Inc.
Plano, Texas USA (800) 879-8000

Sheet	1 of 1
Scale	3/32" = 1"
Date	Oct. 05, 2017

Drawing No.

**HWD
1044c**