

UL/cUL SYSTEM NO. FW-D-1021

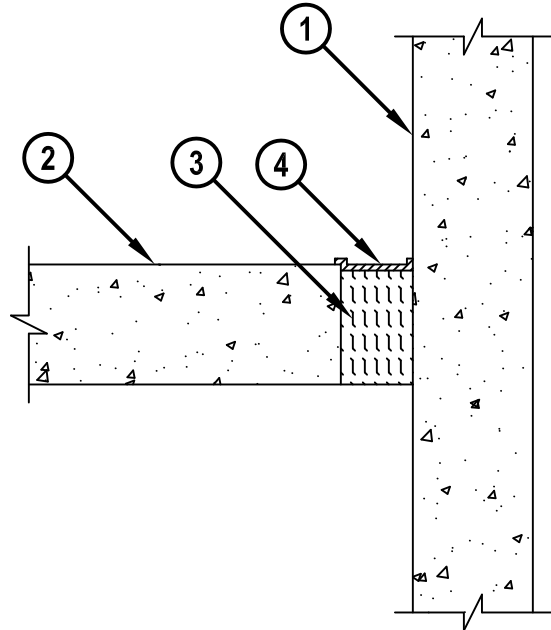
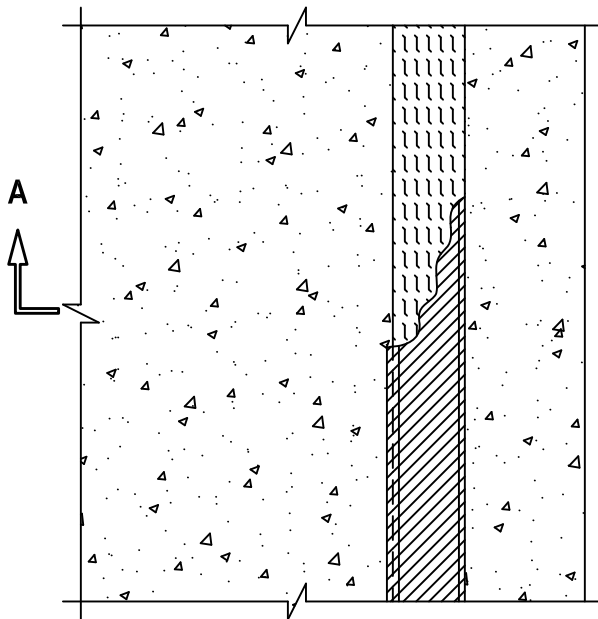
FIRE-RATED JOINT THROUGH CONCRETE FLOOR ASSEMBLY

ASSEMBLY RATING = 3-HR.

CLASS II MOVEMENT CAPABILITIES - 25% COMPRESSION OR EXTENSION

TOP VIEW

SECTION A-A



FWD1021c.062910

1. CONCRETE WALL ASSEMBLY (3-HR. FIRE-RATING) :
 - A. LIGHTWEIGHT OR NORMAL WEIGHT CONCRETE WALL (MINIMUM 5" THICK).
 - B. ANY UL/CUL CLASSIFIED CONCRETE BLOCK WALL.
2. LIGHTWEIGHT OR NORMAL WEIGHT CONCRETE FLOOR (MINIMUM 5" THICK) (3-HR. FIRE-RATING).
3. MINIMUM 4-3/4" THICKNESS MINERAL WOOL (MIN. 4 PCF DENSITY) COMPRESSED MINIMUM 50%.
4. MINIMUM 1/4" (WET) THICKNESS HILTI CFS-SP WB FIRESTOP JOINT SPRAY OR HILTI CP 672 SPEED SPRAY APPLIED WITHIN THE JOINT, FLUSH WITH TOP SURFACE OF FLOOR AND OVERLAPPING A MINIMUM 3/4" ONTO THE TOP SURFACE OF FLOOR AND SIDE OF WALL.

NOTE : MAXIMUM WIDTH OF JOINT = 3".



HILTI, Inc.
Tulsa, Oklahoma USA (800) 879-8000

Sheet	1 of 1
Scale	1/8" = 1"
Date	June 29, 2010

Drawing No.
**FWD
1021c**

Saving Lives through Innovation and Education