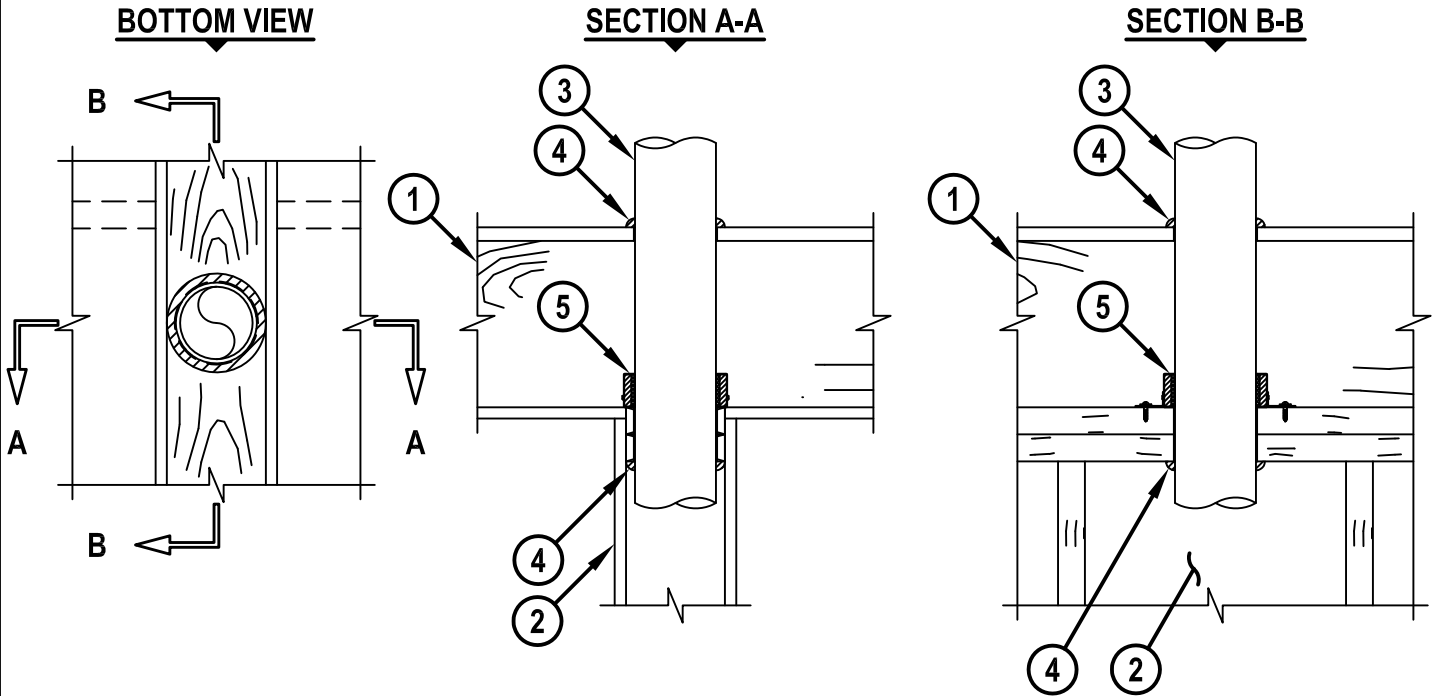


UL SYSTEM NO. F-C-2404

**PVC PLASTIC PIPE THROUGH WOOD FLOOR/CEILING ASSEMBLY**

F-RATING = 1-HR.  
T-RATING = 1/4-HR.

FC2404b.010715



1. WOOD FLOOR/CEILING ASSEMBLY (UL CLASSIFIED L500 SERIES) (1-HR. FIRE-RATING).
2. GYPSUM WALL ASSEMBLY TO INCLUDE THE FOLLOWING CONSTRUCTION FEATURES :
  - A. DOUBLE TOP PLATE AND STUDS TO CONSIST OF NOMINAL 2" x 4" OR 2" x 6" LUMBER.
  - B. MINIMUM 1/2" THICK RATED OR NON-RATED GYPSUM WALLBOARD.
3. PENETRATING ITEM TO BE ONE OF THE FOLLOWING :
  - A. MAXIMUM 4" NOMINAL DIAMETER PVC PLASTIC PIPE (CELLULAR OR SOLID CORE).
  - B. MAXIMUM 4" NOMINAL DIAMETER CPVC PLASTIC PIPE (CLOSED PIPING SYSTEM ONLY).
4. MINIMUM 1/2" BEAD HILTI FS-ONE MAX OR FS-ONE INTUMESCENT FIRESTOP SEALANT.
5. HILTI CP 643N FIRESTOP COLLAR SECURED TO THE TOP SIDE OF TOP PLATE WITH TWO ANCHOR TABS. ANCHOR TABS SECURED WITH 3/4" WOOD SCREWS AND WASHERS.

**NOTES :** 1. DIAMETER OF OPENING = MAXIMUM 1/8" LARGER THAN OUTSIDE DIAMETER OF PENETRANT.  
2. ANNULAR SPACE = MINIMUM 1/16".  
3. CLOSED OR VENTED ASSEMBLY (PVC = SCH 40; CPVC = SDR 13.5).



HILTI, Inc.  
Tulsa, Oklahoma USA (800) 879-8000

Sheet	1 of 1
Scale	3/32" = 1"
Date	Jan. 07, 2015

Drawing No.  
**FC  
2404b**

*Saving Lives through Innovation and Education*