

UL/cUL SYSTEM NO. C-AJ-7122

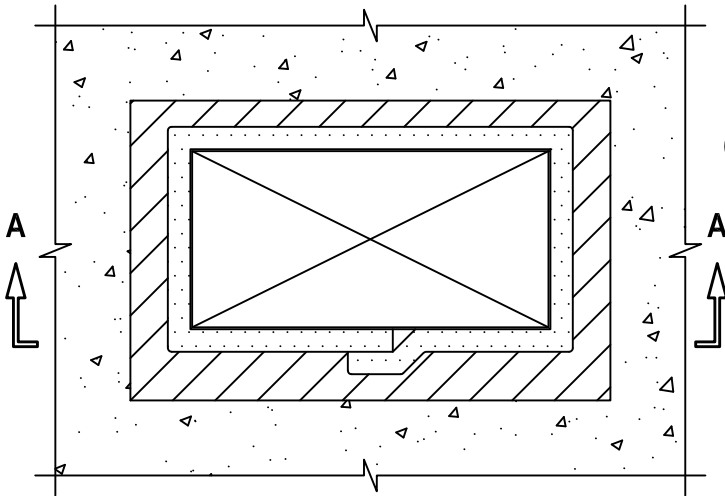
**INSULATED DUCT (UNIFRAX) THROUGH CONCRETE FLOOR/WALL OR
BLOCK WALL ASSEMBLY**

F-RATING = 1-HR. OR 2-HR.

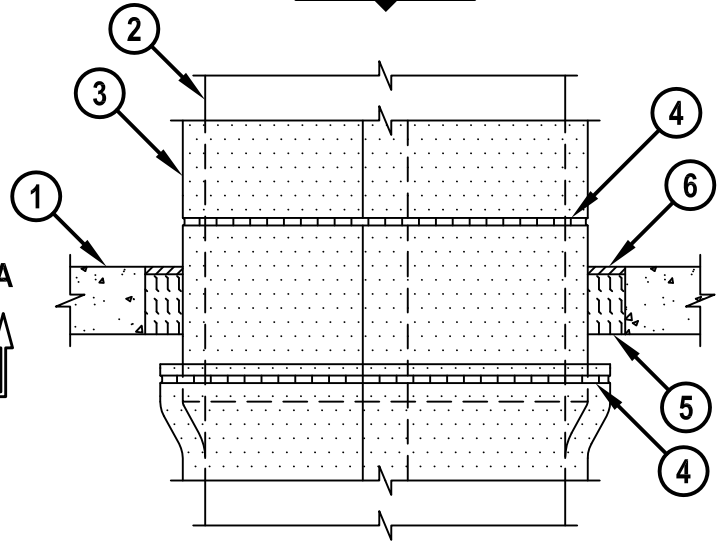
T-RATING = 1-HR. OR 2-HR.

CAJ7122b.010615

TOP VIEW



SECTION A-A



1. CONCRETE FLOOR OR WALL ASSEMBLY (2-HR. FIRE-RATING) :
 - A. LIGHTWEIGHT OR NORMAL WEIGHT CONCRETE FLOOR (MINIMUM 4-1/2" THICK).
 - B. LIGHTWEIGHT OR NORMAL WEIGHT CONCRETE WALL (MINIMUM 5" THICK).
 - C. ANY UL/cUL CLASSIFIED CONCRETE BLOCK WALL.
2. MAXIMUM 24" x 12" STEEL AIR OR GREASE DUCT (MINIMUM 16 GA.).
3. MAXIMUM 1-1/2" THICK FYREWAP DUCT 1.5 MANUFACTURED BY UNIFRAX CORP. (SEE NOTE NO. 3 BELOW).
4. 1/2" WIDE x 0.015" THICK TYPE 302 STAINLESS STEEL BANDING STRAPS USED IN CONJUNCTION WITH 1/2" WIDE x 1" LONG TYPE 302 STAINLESS STEEL CRIMP CLAMPS AT MAXIMUM 12" C/C AND 1-1/2" TO 3" FROM TRANSVERSE JOINT ON OUTER LAYER OF DUCT WRAP.
5. MINIMUM 4" THICKNESS UNFACED SCRAP DUCT WRAP MATERIAL OR MINERAL WOOL (MIN. 3 PCF DENSITY) TIGHTLY PACKED.
6. MINIMUM 1/2" DEPTH HILTI FS-ONE MAX OR FS-ONE INTUMESCENT FIRESTOP SEALANT.

NOTES : 1. MAXIMUM AREA OF OPENING = 640 SQ. IN., WITH MAXIMUM DIMENSION OF 32".
2. ANNULAR SPACE = MINIMUM 1-1/4", MAXIMUM 1-3/4".
3. STEEL AIR DUCT WRAPPED WITH ONE LAYER OF DUCT WRAP FOR 1-HR. F AND T-RATINGS, OR TWO LAYERS FOR 2-HR. F AND T-RATINGS. STEEL GREASE DUCTS REQUIRE TWO LAYERS OF DUCT WRAP IN ACCORDANCE WITH INSTALLATION INSTRUCTIONS.



HILTI, Inc.
Tulsa, Oklahoma USA (800) 879-8000

Sheet	1 of 1
Scale	5/64" = 1"
Date	Jan. 06, 2015

Drawing No.
**CAJ
7122b**