

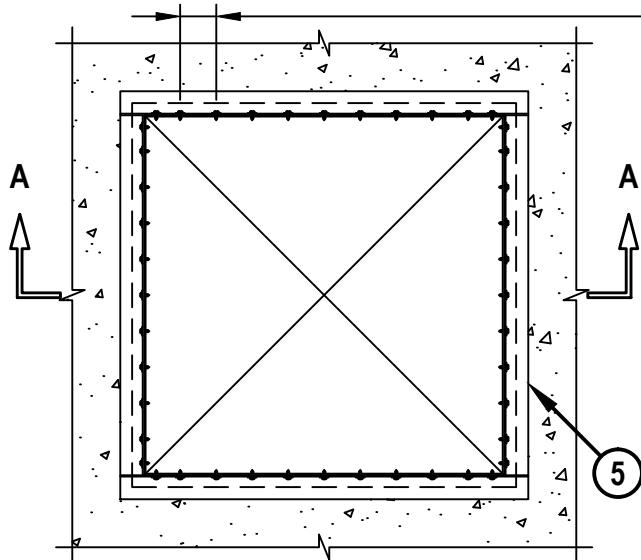
METAL DUCT (WITHOUT DAMPER) THROUGH CONCRETE FLOOR/WALL OR BLOCK WALL

F-RATING = 3-HR.
T-RATING = 1-HR.

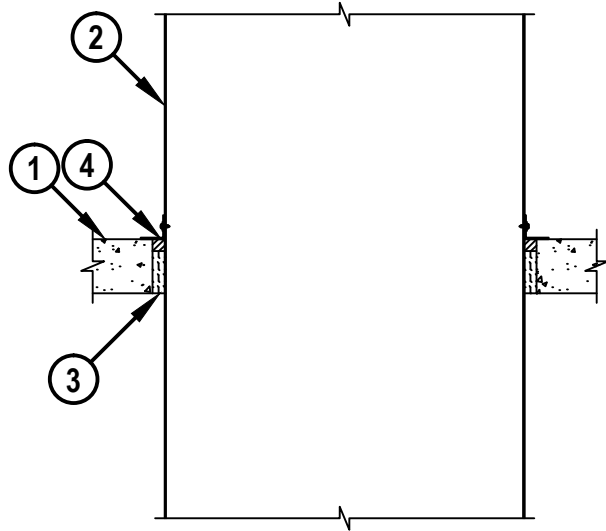
CAJ7051f.021218

TOP VIEW

MAX. 3" C/C SPACING
(SEE NOTE NO. 4 BELOW)



SECTION A-A



1. CONCRETE FLOOR OR WALL ASSEMBLY (3-HR FIRE-RATING) :
 - A. LIGHTWEIGHT OR NORMAL WEIGHT CONCRETE FLOOR (MINIMUM 4-1/2" THICK).
 - B. LIGHTWEIGHT OR NORMAL WEIGHT CONCRETE WALL (MINIMUM 5-1/2" THICK).
 - C. ANY UL/cUL CLASSIFIED CONCRETE BLOCK WALL.
2. STEEL DUCT TO CONSIST OF ONE OF THE FOLLOWING (NOTE : NOT FOR USE IN DUCT SYSTEMS CONTAINING A DAMPER) :
 - A. MAXIMUM 30" x 30" RECTANGULAR STEEL DUCT (MIN. 24 GA.).
 - B. MAXIMUM 30" x 30" RECTANGULAR STEEL DUCT (MIN. 24 GA.) WITH BW11 COATING MATERIAL (FLAMEBAR BW11 FIRE RATED DUCTWORK BY FIRESPRAY INTERNATIONAL, LTD.).
3. MINIMUM 3-1/2" THICKNESS MINERAL WOOL (MIN. 4 PCF DENSITY) TIGHTLY PACKED.
4. MINIMUM 1" DEPTH HILTI CP 606 FLEXIBLE FIRESTOP SEALANT OR HILTI FS-ONE MAX INTUMESCENT FIRESTOP SEALANT.
5. SEE NOTE NO. 4 BELOW.

NOTES : 1. MAXIMUM AREA OF OPENING = 1024 SQUARE INCHES WITH A MAXIMUM DIMENSION OF 32".
 2. ANNULAR SPACE = MINIMUM 1/4", MAXIMUM 1-3/4".
 3. MINIMUM 1" DEPTH HILTI CP 606/FS-ONE MAX FIRESTOP SEALANT AND STEEL ANGLES ARE REQUIRED ON BOTH SIDES OF A WALL ASSEMBLY.
 4. AFTER SEALING SPACE BETWEEN DUCT AND CONCRETE FLOOR/WALL ASSEMBLY WITH HILTI FIRESTOP SEALANT, FASTEN STEEL ANGLE (L2 x 2 x MIN. 16 GA.) TO DUCT WITH NO. 8 (OR LARGER) STEEL SHEET METAL SCREWS. ANGLE DOES NOT HAVE TO BE FASTENED TO CONCRETE FLOOR/WALL ASSEMBLY.



HILTI, Inc.
Plano, Texas USA (800) 879-8000

Sheet	1 of 1
Scale	1/16" = 1"
Date	Feb. 12, 2018

Drawing No.

**CAJ
7051f**