

ELECTRICAL BUSWAY THROUGH CONCRETE FLOOR/WALL OR BLOCK WALL

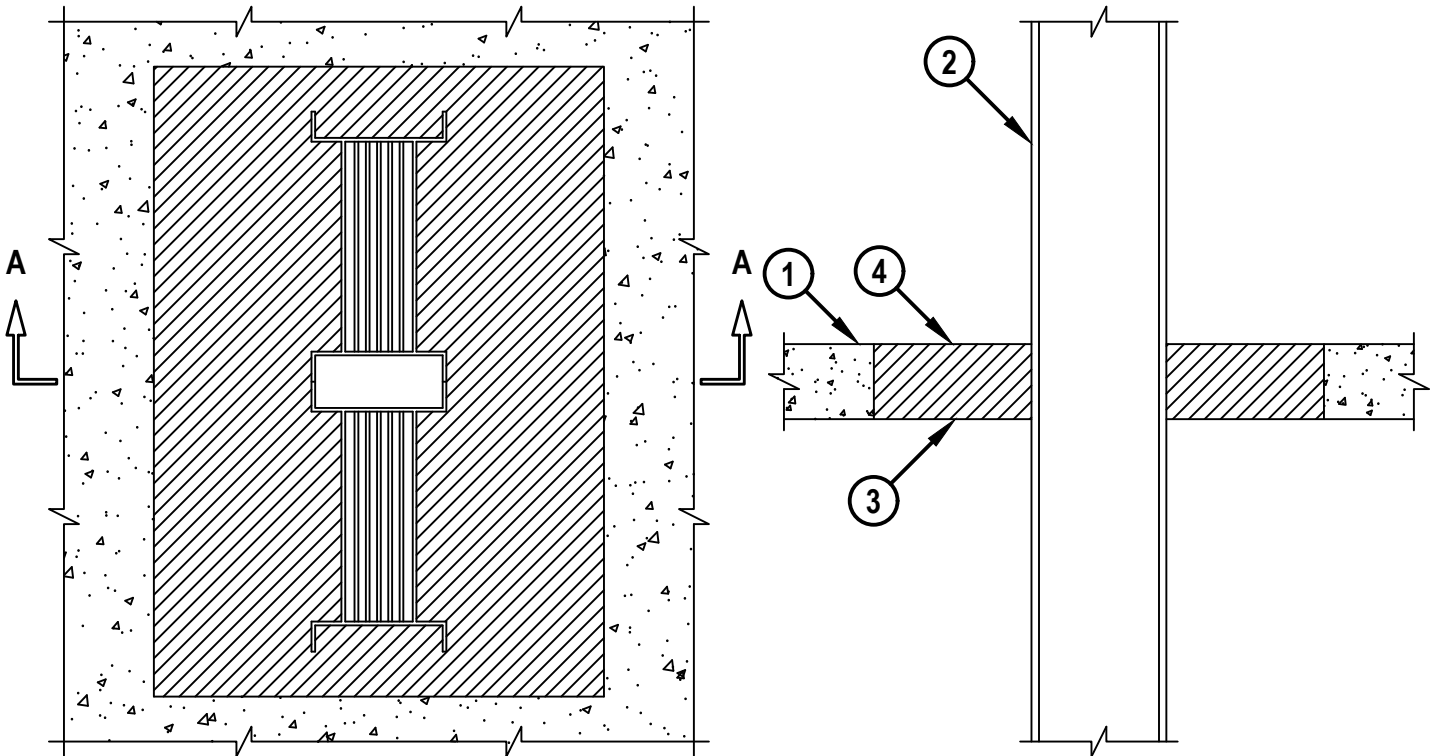
F-RATING = 3-HR.

T-RATING = 0-HR.

CAJ6006k.052424

TOP VIEW

SECTION A-A



1. CONCRETE FLOOR OR WALL ASSEMBLY (3-HR. FIRE-RATING) :
 - A. LIGHTWEIGHT OR NORMAL WEIGHT CONCRETE FLOOR OR WALL (MIN. 2-1/2" THICK).
 - B. ANY UL/cUL CLASSIFIED CONCRETE BLOCK WALL.
2. ELECTRICAL BUSWAY (NOMINAL 23" WIDE x 4-1/2" DEEP, OR SMALLER) ("I" SHAPED ALUMINUM ENCLOSURE CONTAINING FACTORY MOUNTED ALUMINUM BARS RATED FOR 600V, 4000A, OR COPPER BARS RATED FOR 600V, 5000A).
3. FORMING NOT SHOWN. USE RIGID BOARD MATERIAL TO SUPPORT HILTI CP 637 FIRESTOP MORTAR DURING ITS INITIAL CURE (MIN. 24 HRS.).
4. MINIMUM 2-1/2" DEPTH HILTI CP 637 FIRESTOP MORTAR.

NOTES : 1. MAX. AREA OF OPENING IS 560 SQ. IN. WITH A MAX. DIMENSION OF 28".
 2. MIN. 1" CLEARANCE REQUIRED BETWEEN BUSWAY AND PERIPHERY OF OPENING.



Hilti Firestop Systems

HILTI, Inc.
 Plano, Texas USA (800) 879-8000

Sheet	1 of 1
Scale	5/32" = 1"
Date	May 24, 2024

Drawing No.

**CAJ
6006k**