

CABLE BUNDLE THROUGH CONCRETE FLOOR/WALL OR BLOCK WALL

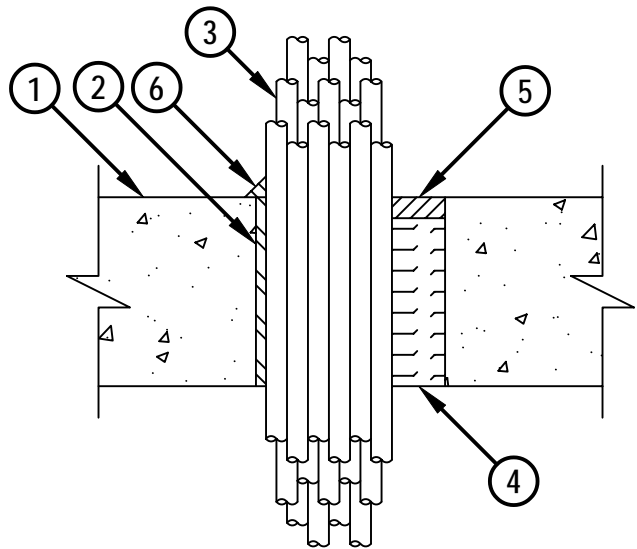
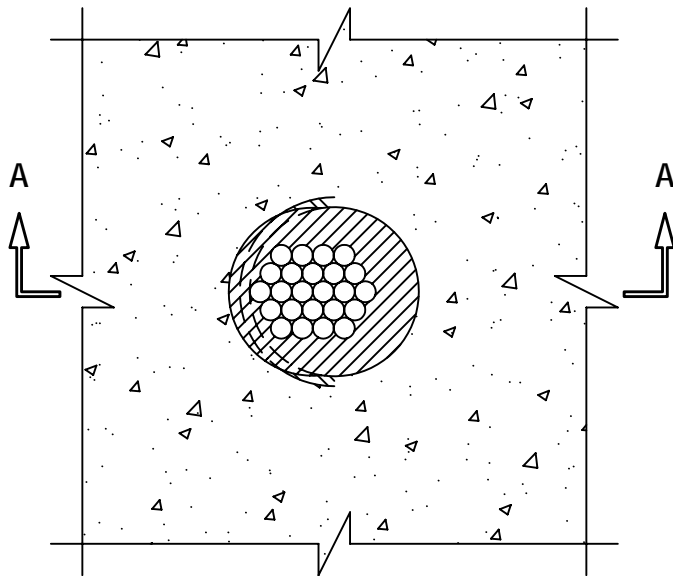
F-RATING = 3-HR.

T-RATING = 0-HR.

CAJ3181c.011703

TOP VIEW

SECTION A-A



1. CONCRETE FLOOR OR WALL ASSEMBLY (3-HR. FIRE-RATING) :
 - A. LIGHTWEIGHT OR NORMAL WEIGHT CONCRETE FLOOR (MIN. 4-1/2" THICK).
 - B. ANY UL/ULC CLASSIFIED CONCRETE BLOCK WALL.
2. OPTIONAL : MAXIMUM 4" NOMINAL DIAMETER STEEL PIPE SLEEVE (SCHEDULE 40 OR HEAVIER).
3. CABLE BUNDLE TO BE A COMBINATION OF ANY OF THE FOLLWOING :
 - A. MAXIMUM 300 PAIR NO. 24 AWG TELEPHONE CABLE WITH PVC JACKET.
 - B. MAXIMUM 500 KCMIL POWER CABLE WITH PVC JACKET.
 - C. MAXIMUM 7/C NO. 12 AWG POWER CABLE WITH PVC JACKET.
 - D. MAXIMUM 1/2" DIAMETER FIBER-OPTIC CABLE (24 FIBER).
 - E. MAXIMUM 3/C NO. 12 AWG METAL-CLAD CABLE.
 - F. MAXIMUM 3/C (+GROUND) 2/0 AWG COPPER SER CABLE WITH PVC JACKET.
 - G. TYPE RG/U COAXIAL CABLE.
4. MINIMUM 4" THICKNESS MINERAL WOOL (MIN. 4 PCF DENSTIY) TIGHTLY PACKED.
5. MINIMUM 1/2" DEPTH HILTI CP 606 FLEXIBLE FIRESTOP SEALANT.
6. MINIMUM 1/2" CROWN HILTI CP 606 FLEXIBLE FIRESTOP SEALANT AT POINT OF CONTACT.

NOTES : 1. MAXIMUM DIAMETER OF OPENING = 4".
 2. ANNULAR SPACE = MINIMUM 0", MAXIMUM 1-7/8".
 3. CABLES TO FILL MIN. 25%, TO MAX. 60% OF CROSS-SECTIONAL AREA OF OPENING.
 4. MINIMUM 1/2" DEPTH HILTI CP 606 FLEXIBLE FIRESTOP SEALANT IS REQUIRED ON BOTH SIDES OF A WALL ASSEMBLY.

	HILTI, Inc. Tulsa, Oklahoma USA (918) 252-6000	<i>Sheet</i> 1 of 1	<i>Drawing No.</i> CAJ 3181c
		<i>Scale</i> 7/32" = 1"	
			<i>Date</i> Jan. 17, 2003

Saving Lives through Innovation and Education