

UL SYSTEM NO. C-AJ-2570

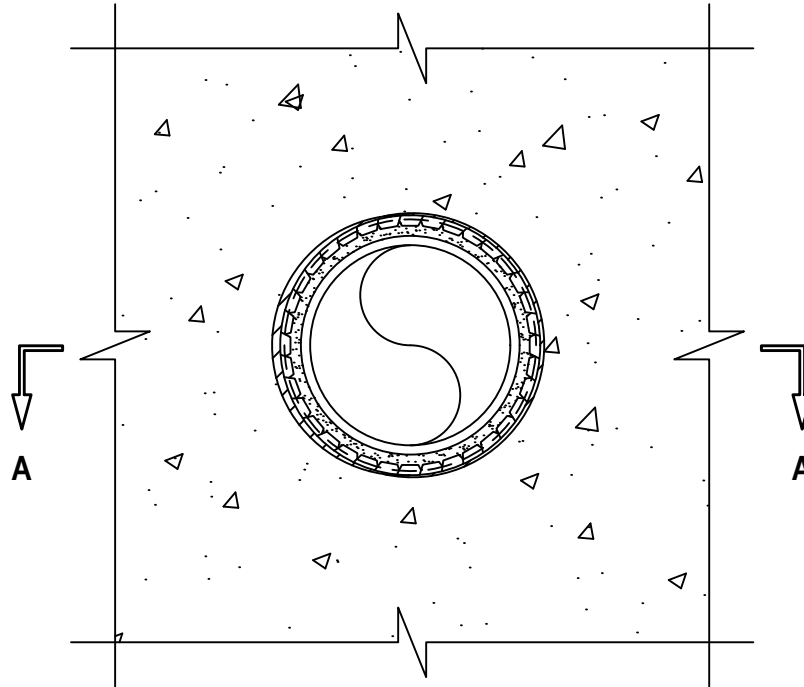
PLASTIC PIPE THROUGH CONCRETE FLOOR/WALL OR BLOCK WALL ASSEMBLY

F-RATING = 2-HR.

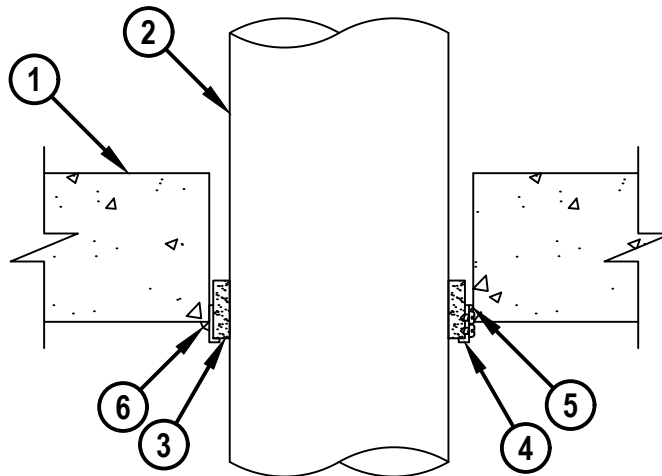
T-RATING = 0-HR.

W-RATING - CLASS I (SEE NOTE NO. 5 BELOW)

BOTTOM VIEW



SECTION A-A



CAJ2570e.111816



HILTI, Inc.
Plano, Texas USA (800) 879-8000

Sheet 1 of 2
Scale 1 1/64" = 1"
Date Nov. 18, 2016

Drawing No.
**CAJ
2570e**

Saving Lives through Innovation and Education

UL SYSTEM NO. C-AJ-2570

PLASTIC PIPE THROUGH CONCRETE FLOOR/WALL OR BLOCK WALL ASSEMBLY

F-RATING = 2-HR.

T-RATING = 0-HR.

W-RATING - CLASS I (SEE NOTE NO. 5 BELOW)

CAJ2570e.111816

1. CONCRETE FLOOR OR WALL ASSEMBLY (2-HR. FIRE-RATING) :
 - A. LIGHTWEIGHT OR NORMAL WEIGHT CONCRETE FLOOR OR WALL (MINIMUM 4-1/2" THICK).
 - B. PRECAST (HOLLOW-CORE) CONCRETE FLOOR (MINIMUM 6" THICK).
 - C. ANY UL/cUL CLASSIFIED CONCRETE BLOCK WALL.
2. PENETRATING ITEM TO BE ONE OF THE FOLLOWING :
 - A. NOMINAL 6" DIAMETER PVC PLASTIC PIPE (CELLULAR OR SOLID CORE).
 - B. NOMINAL 6" DIAMETER CPVC PLASTIC PIPE (CLOSED PIPING SYSTEM ONLY).
 - C. NOMINAL 6" DIAMETER RIGID NONMETALLIC CONDUIT (RNC) PVC CONDUIT.
3. HILTI CP 648S/6" WRAP STRIP WRAPPED CONTINUOUSLY AROUND CIRCUMFERENCE OF PIPE, AND HELD IN PLACE WITH INTEGRATED FASTENING TAPE. WRAP STRIP (WITH RETAINING COLLAR) TO EXTEND 1/2" FROM BOTTOM SURFACE OF FLOOR OR BOTH SURFACES OF WALL.
4. HILTI 1-3/4" RETAINING COLLAR WRAPPED OVER THE WRAP STRIP, OVERLAPPING MINIMUM 1/2" AND SECURED WITH TWO NO. 8 SHEET METAL SCREWS.
5. MINIMUM 1/4" DEPTH HILTI FS-ONE MAX INTUMESCENT FIRESTOP SEALANT FLUSH WITH BOTTOM SURFACE OF FLOOR.
6. MINIMUM 1/4" BEAD HILTI FS-ONE MAX INTUMESCENT FIRESTOP SEALANT APPLIED AT RETAINING COLLAR/CONCRETE FLOOR INTERFACE.
7. [OPTIONAL- NOT SHOWN] MINIMUM 1/4" DEPTH HILTI FS-ONE MAX INTUMESCENT FIRESTOP SEALANT OR HILTI CFS-S SIL SL FIRESTOP SILICONE SEALANT MAY BE INSTALLED FLUSH WITH TOP SURFACE OF FLOOR. MINIMUM 1/2" THICKNESS MINERAL WOOL MAY BE USED AS A BACKER.

NOTES : 1. MAXIMUM DIAMETER OF OPENING = 8" [FOR NORMAL CONCRETE], 7" [FOR PRECAST (HOLLOW-CORE) CONCRETE].
2. ANNULAR SPACE = MINIMUM 1/2", MAXIMUM 1".
3. HILTI CP 648S FIRESTOP WRAP STRIP WITH RETAINING COLLAR AND FS-ONE MAX INTUMESCENT FIRESTOP SEALANT ARE REQUIRED ON BOTH SIDES OF A WALL ASSEMBLY.
4. CLOSED OR VENTED PIPING SYSTEM (PVC AND RNC = SCHEDULE 40; CPVC = SDR 13.5).
5. W-RATING APPLIED ONLY WHEN HILTI CFS-S SIL SL FIRESTOP SILICONE SEALANT IS USED FLUSH WITH TOP SURFACE OF FLOOR.



HILTI, Inc.
Plano, Texas USA (800) 879-8000

Sheet	2 of 2
Scale	-
Date	Nov. 18, 2016

Drawing No.

**CAJ
2570e**

Saving Lives through Innovation and Education