

UL SYSTEM NO. C-AJ-2567

PLASTIC PIPE THROUGH CONCRETE FLOOR/WALL OR BLOCK WALL ASSEMBLY

F-RATING = 2-HR.

T-RATING = 0-HR., 1 1/4-HR., OR 2-HR. (SEE NOTE NO. 5 BELOW)

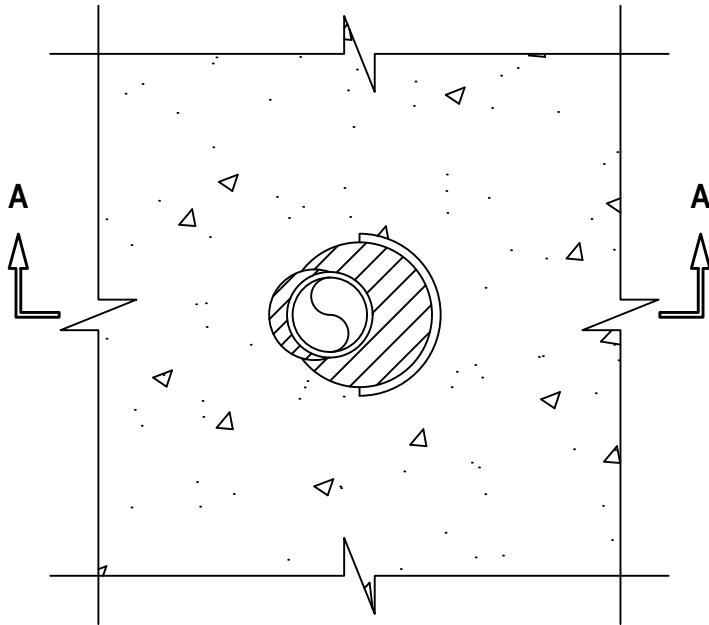
L-RATING AT AMBIENT = LESS THAN 1 CFM / SQ FT

L-RATING AT 400°F = 4 CFM / SQ FT

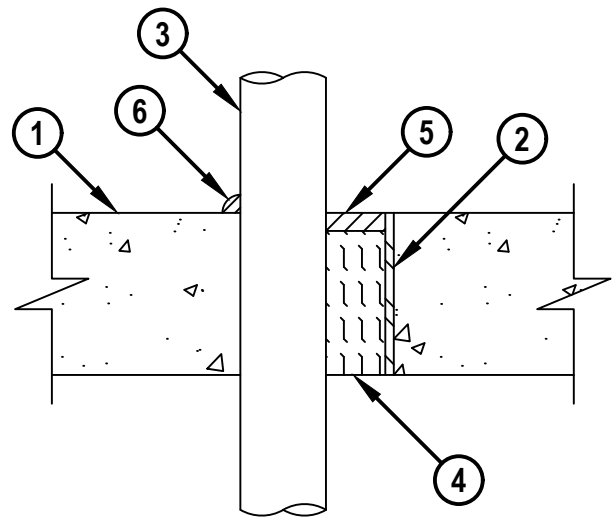
W-RATING = CLASS I (SEE NOTE NO. 7 BELOW)

CAJ2567h.090921

TOP VIEW



SECTION A-A



1. CONCRETE FLOOR OR WALL ASSEMBLY (2-HR. FIRE-RATING).
 - A. LIGHTWEIGHT OR NORMAL WEIGHT CONCRETE FLOOR (MINIMUM 4-1/2" THICK).
 - B. LIGHTWEIGHT OR NORMAL WEIGHT CONCRETE WALL (MINIMUM 5" THICK).
 - C. PRECAST (HOLLOW-CORE) CONCRETE FLOOR (MINIMUM 6" THICK).
 - D. ANY UL CLASSIFIED CONCRETE BLOCK WALL.
2. [OPTIONAL] MAXIMUM 4" NOMINAL DIAMETER STEEL PIPE SLEEVE (SCHEDULE 40 OR HEAVIER) MAY EXTEND MAXIMUM 3" ABOVE FLOOR, OR BOTH SIDES OF WALL.
3. PENETRATING ITEM TO BE ONE OF THE FOLLOWING :
 - A. MAXIMUM 2" (51 MM OD) NOMINAL DIAMETER POLYVINYL CHLORIDE (PVC) PIPE (CELLULAR OR SOLID CORE) (SCHEDULE 40) (CLOSED OR VENTED PIPING SYSTEM).
 - B. MAXIMUM 2" (51 MM OD) NOMINAL DIAMETER CHLORINATED POLYVINYL CHLORIDE (CPVC) PIPE (SDR 17) (CLOSED OR VENTED PIPING SYSTEM).



HILTI, Inc.
Plano, Texas USA (800) 879-8000

| | |
|-------|---------------|
| Sheet | 1 of 2 |
| Scale | 3/16" = 1" |
| Date | Sep. 09, 2021 |

Drawing No.
CAJ
2567h

Saving Lives through Innovation and Education

PLASTIC PIPE THROUGH CONCRETE FLOOR/WALL OR BLOCK WALL ASSEMBLY

F-RATING = 2-HR.

T-RATING = 0-HR., 1 1/4-HR., OR 2-HR. (SEE NOTE NO. 5 BELOW)

L-RATING AT AMBIENT = LESS THAN 1 CFM / SQ FT

L-RATING AT 400°F = 4 CFM / SQ FT

W-RATING = CLASS I (SEE NOTE NO. 7 BELOW)

CAJ2567h.090921

- C. MAXIMUM 2" (51 MM OD) NOMINAL DIAMETER RIGID NONMETALLIC CONDUIT (RNC).
- D. MAXIMUM 2" (51 MM OD) NOMINAL DIAMETER CROSSLINKED POLYETHYLENE (PEX) TUBING (SDR 9) (CLOSED PIPING SYSTEM).
- E. MAXIMUM 2" (63 MM OD) NOMINAL DIAMETER AQUATHERM GREENPIPE POLYPROPYLENE (PP-R) PLASTIC PIPE (SDR 7.4 OR 11) (CLOSED PIPING SYSTEM).
- F. MAXIMUM 2" (63 MM OD) NOMINAL DIAMETER AQUATHERM BLUEPIPE POLYPROPYLENE (PP-RCT) PLASTIC PIPE (SDR 9, 11 OR 17.6) (CLOSED PIPING SYSTEM).
- G. MAXIMUM 2" (63 MM OD) NOMINAL DIAMETER NUPI AMERICAS NIRON POLYPROPYLENE (PP-RCT) PLASTIC PIPE (SDR 7.3, 11, OR 17) (CLOSED PIPING SYSTEM).
- H. MAXIMUM 2" (63 MM OD) NOMINAL DIAMETER AQUATECHNIK NA FUSION-TECH POLYPROPYLENE (PP-RCT) PLASTIC PIPE (SDR 7.4, 11 OR 17.6) (CLOSED PIPING SYSTEM).
- I. MAXIMUM 2" (63 MM OD) NOMINAL DIAMETER UPONOR POLYPROPYLENE (PP) PLASTIC PIPE (SDR 9 OR 11) (CLOSED PIPING SYSTEM).
- 4. MINIMUM 4" THICKNESS MINERAL WOOL (MIN. 4 PCF DENSITY) TIGHTLY PACKED.
- 5. MINIMUM 1/2" DEPTH HILTI FS-ONE MAX INTUMESCENT FIRESTOP SEALANT.
- 6. MINIMUM 1/2" BEAD HILTI FS-ONE MAX INTUMESCENT FIRESTOP SEALANT APPLIED AT POINT OF CONTACT.

- NOTES :**
- 1. MAXIMUM DIAMETER OF OPENING = 4".
 - 2. ANNULAR SPACE [WITH SLEEVE] = MINIMUM 1/4", MAXIMUM 1-3/8".
 - 3. ANNULAR SPACE [WITHOUT SLEEVE] = MINIMUM 0", MAXIMUM 1-5/8".
 - 4. WHEN HOLLOW-CORE FLOOR ARE USED, MINERAL WOOL MUST BE INSTALLED FLUSH WITH BOTTOM SURFACE OF FLOOR.
 - 5. WHEN STEEL SLEEVE (ITEM 2) IS NOT INSTALLED, T-RATING = 2-HR.
WHEN STEEL SLEEVE (ITEM 2) IS INSTALLED FLUSH WITH SURFACES OF ASSEMBLY, T-RATING = 1-1/4-HR.
WHEN STEEL SLEEVE (ITEM 2) IS INSTALLED BEYOND SURFACES OF ASSEMBLY, T-RATING = 0-HR.
 - 6. MINIMUM 1/2" DEPTH HILTI FS-ONE MAX INTUMESCENT FIRESTOP SEALANT IS REQUIRED ON BOTH SIDES OF A WALL.
 - 7. [OPTIONAL] FOR W-RATING, RECESS FS-ONE MAX 1/4" FROM TOP SURFACE OF FLOOR AND APPLY MINIMUM 1/4" DEPTH HILTI CFS-S SIL GG FIRESTOP SILICONE SEALANT OR HILTI CFS-S SIL SL FIRESTOP SILICONE SEALANT, FLUSH WITH TOP OF FLOOR. MINIMUM 3/16" ANNULAR SPACE IS REQUIRED TO OBTAIN W-RATING.



HILTI, Inc.
Plano, Texas USA (800) 879-8000

| | |
|-------|---------------|
| Sheet | 2 of 2 |
| Scale | - |
| Date | Sep. 09, 2021 |

Drawing No.

**CAJ
2567h**