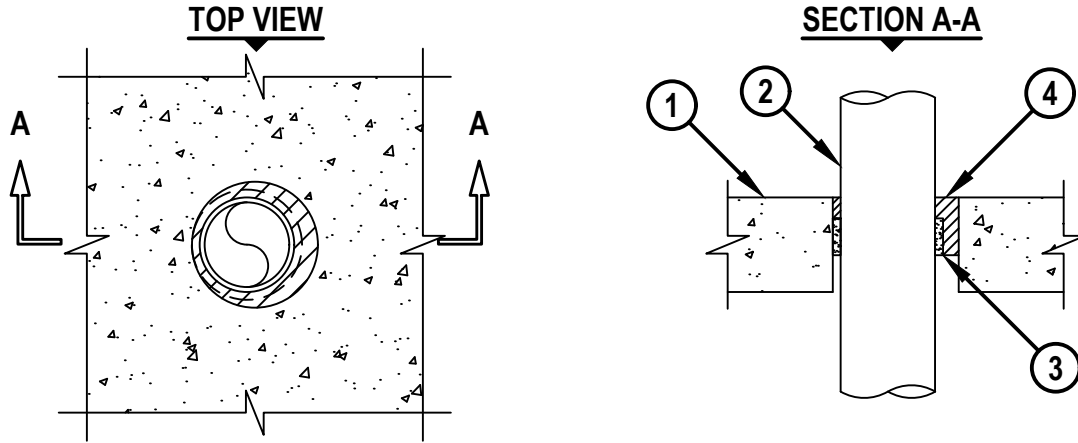


PLASTIC PIPE THROUGH CONCRETE FLOOR/WALL OR BLOCK WALL ASSEMBLY

F-RATING = 2-HR.
 T-RATING = 0-HR.
 W-RATING = CLASS I

CAJ2566c.040722



1. CONCRETE FLOOR OR WALL ASSEMBLY (2-HR. FIRE-RATING) :
 - A. LIGHTWEIGHT OR NORMAL WEIGHT CONCRETE FLOOR OR WALL (MINIMUM 4-1/2" THICK).
 - B. ANY UL CLASSIFIED CONCRETE BLOCK WALL.
2. PENETRATING ITEM TO BE ONE OF THE FOLLOWING :
 - A. MAXIMUM 4" NOMINAL DIAMETER PVC PLASTIC PIPE (CELLULAR OR SOLID CORE).
 - B. MAXIMUM 4" NOMINAL DIAMETER ABS PLASTIC PIPE (CELLULAR OR SOLID CORE).
 - C. MAXIMUM 4" NOMINAL DIAMETER FRPP PLASTIC PIPE.
 - D. MAXIMUM 4" NOMINAL DIAMETER RIGID NONMETALLIC CONDUIT (RNC).
3. HILTI CP 648S WRAP STRIP WRAPPED CONTINUOUSLY AROUND CIRCUMFERENCE OF PIPE, AND HELD IN PLACE WITH INTEGRATED FASTENING TAPE. WRAP STRIP TO BE RECESSED MAXIMUM 1-1/4" FROM BOTTOM SURFACE OF FLOOR OR MINIMUM 1" FROM BOTH SURFACES OF WALL TO ACCOMMODATE FIRE FOAM (SEE TABLE BELOW).
4. MINIMUM 1" DEPTH HILTI CP 620 FIRE FOAM FLUSH WITH TOP SURFACE OF FLOOR OR BOTH SURFACES OF A WALL. ADDITIONAL FIRE FOAM APPLIED TO FILL THE ANNULAR SPACE BETWEEN THE WRAP STRIP AND THE PERIPHERY OF THE OPENING.

NOMINAL PIPE DIAMETER	PRODUCT DESCRIPTION	MAXIMUM DIAMETER OF OPENING	ANNULAR SPACE	
			MINIMUM	MAXIMUM
1-1/2"	CP 648S - 1.5" US	3"	3/16"	3/4"
2"	CP 648S - 2" US	3-1/2"	3/16"	15/16"
3"	CP 648S - 3" US	4"	3/16"	5/16"
4"	CP 648S - 4" US	6"	3/8"	1-1/8"

NOTES : 1. HILTI CP 648S WRAP STRIPS AND HILTI CP 620 FIRE FOAM ARE REQUIRED ON BOTH SIDES OF A WALL ASSEMBLY.
 2. CLOSED OR VENTED PIPING SYSTEM (PVC, ABS, FRPP, RNC = SCHEDULE 40).



HILTI, Inc.
 Plano, Texas USA (800) 879-8000

Sheet 1 of 1
 Scale 7/64" = 1"
 Date Apr. 07, 2022

Drawing No.
CAJ 2566c