

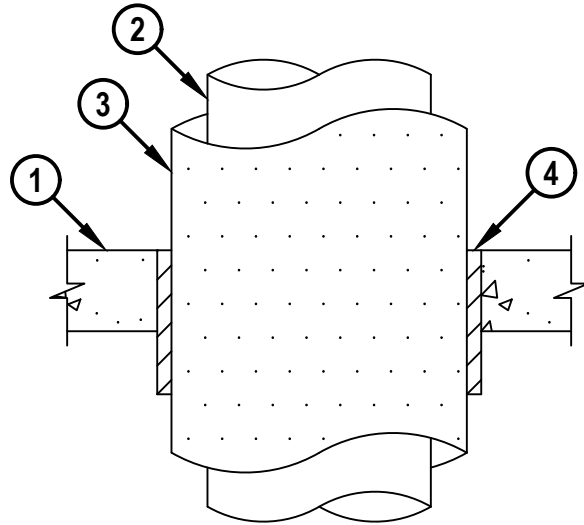
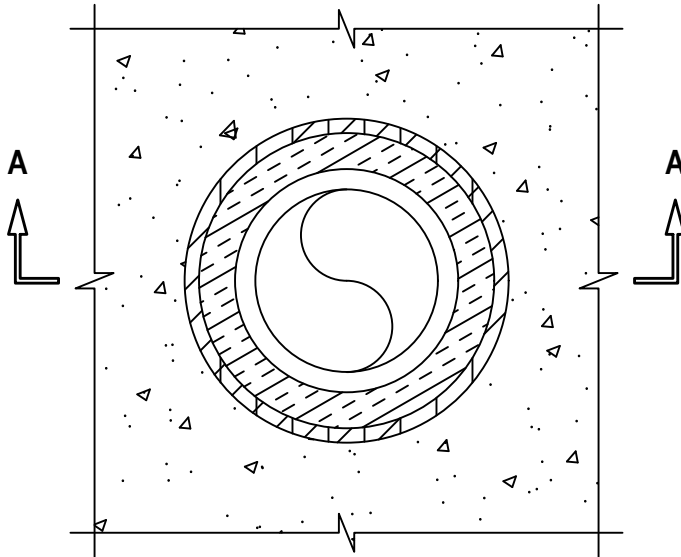
INSULATED NONMETALLIC PIPE THROUGH CONCRETE FLOOR/WALL ASSEMBLY

F-RATING = 2-HR.
T-RATING = 2-HR.

CAJ5432b.091322

TOP VIEW

SECTION A-A



1. CONCRETE FLOOR OR WALL ASSEMBLY (2-HR. FIRE-RATING) :
 - A. LIGHTWEIGHT OR NORMAL WEIGHT CONCRETE FLOOR OR WALL (MINIMUM 4-1/2" THICK).
 - B. ANY UL/cUL CLASSIFIED CONCRETE BLOCK WALL.
2. PENETRATING ITEM TO BE ONE OF THE FOLLOWING :
 - A. NOMINAL 12" DIAMETER AQUATHERM BLUEPIPE POLYPROPYLENE (PP-R) (SDR 9 OR 11) (CLOSED PIPING SYSTEM).
 - B. NOMINAL 12" DIAMETER MULTI CLIMA POLYPROPYLENE (PP-RCT) (SDR 7.3) MANUFACTURED BY NIRON (CLOSED PIPING SYSTEM).
3. MAXIMUM 2" THICK GLASS-FIBER PIPE INSULATION (SEE NOTE NO. 4 BELOW).
4. HILTI CFS-BL FIRESTOP BLOCK (2" THICK x 5" WIDE x 8" DEEP, REFERENCE : TOP VIEW) FIRMLY PACKED, AND FLUSH WITH TOP SURFACE OF FLOOR OR CENTERED IN WALL.

NOTES :

1. MAXIMUM DIAMETER OF OPENING = 18".
2. ANNULAR SPACE = MINIMUM 1/2", MAXIMUM 1-1/8".
3. APPLY HILTI FS-ONE MAX INTUMESCENT FIRESTOP SEALANT IN ANY VOID THAT MAY EXIST AROUND PENETRANT OR FIRESTOP BLOCKS ON TOP SIDE OF FLOOR OR BOTH SIDES OF WALL.
4. AS AN ALTERNATIVE TO ITEM 3, MAXIMUM 2" THICK MINERAL FIBER PIPE INSULATION (MIN. 3.5 PCF DENSITY) MAY BE USED (MINERAL FIBER PIPE INSULATION TO BE MANUFACTURED BY OWENS CORNING).



HILTI, Inc.
Plano, Texas USA (800) 879-8000

| | |
|-------|---------------|
| Sheet | 1 of 1 |
| Scale | 3/32" = 1" |
| Date | Sep. 13, 2022 |

Drawing No.
**CAJ
5432b**