

# CFS-MSL GPR RETROFIT GANGPLATES

## Product description

- Surface-mounted gangplates for installing modular fire sleeves after drywall

## Product features

- Includes ready-to-install smoke gasket — no additional products required
- Modular design for easier customization — you can combine different sizes of fire-rated sleeves within one frame
- Retrofittable design for easier installation in existing cable openings
- Withstands the rigors of usage and time
- Can be installed in wall applications (not for floors)
- Can be stacked in rows or columns
- Buy American Compliant

## Areas of application

- Cable and cable bundles

## For use with

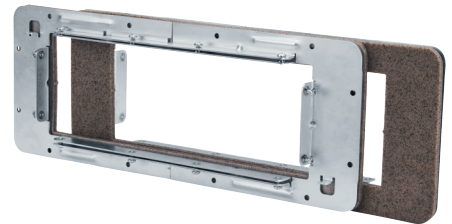
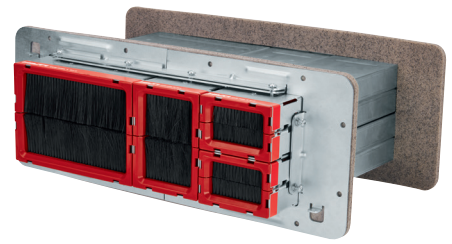
- Gypsum wall systems rated up to 2 hours

## Examples

- Electrical wiring
- Premise wiring
- Low voltage and datacom

## Installation instructions

- See Hilti literature or third-party listings for complete application and installation details



## Technical Data

Device loading area (LxH)	9 x 4" (229 x 102mm)	12 x 4" (305 x 102mm)
Length	13" (330mm)	16" (406mm)
Width	0.8" (20mm)	0.8" (20mm)
Height	6" (152mm)	6" (152mm)
Application & storage temperature	-22 °F to 167 °F (-30 °C to 75 °C)	
Metal	Steel with zinc coating	
Tested in accordance with	UL 1479 ASTM E 814 CAN/ULC-S115	

Firestop Device  
FOR USE IN THROUGH  
PENETRATION FIRESTOP  
SYSTEMS SEE  
UL PRODUCT IQ

