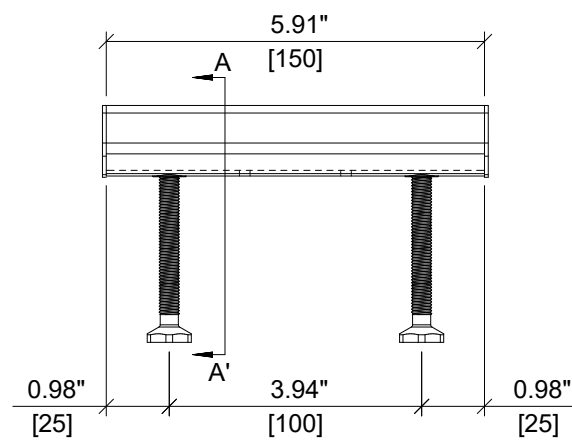
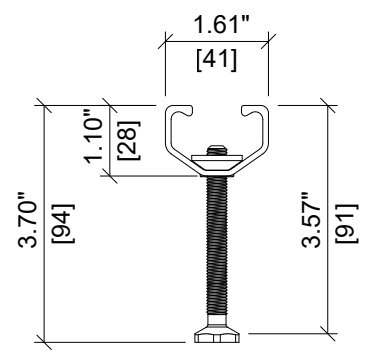


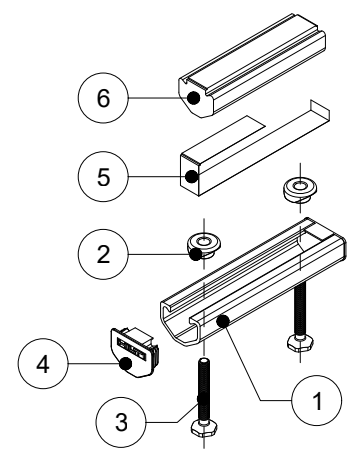
ITEM	DESCRIPTION	QUANTITY
1	CHANNEL PROFILE	1
2	RIVET CONNECTION	2
3	ROUNDED HEADED ANCHOR	2
4	END CAP	2
5	TEAR OUT BAND	1
6	FILLER FOAM	1



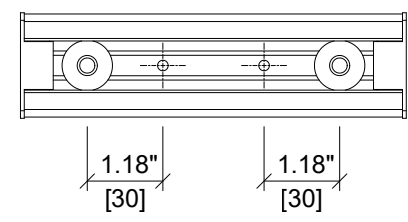
**ELEVATION VIEW**



**SECTION A-A'**



**ISOMETRIC VIEW**



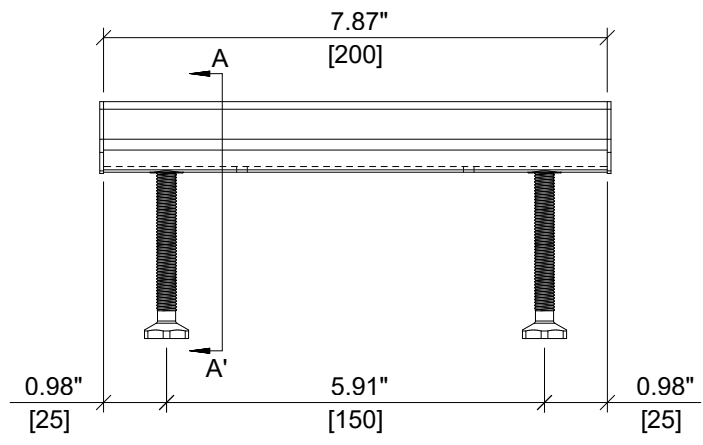
**PLAN VIEW**



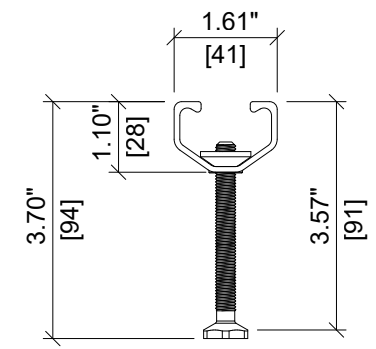
ITEM NUMBER: <b>2107348</b>	CHANNEL LIP: <b>SMOOTH</b>
ITEM DESCRIPTION: <b>HAC-40 91/150 F</b>	



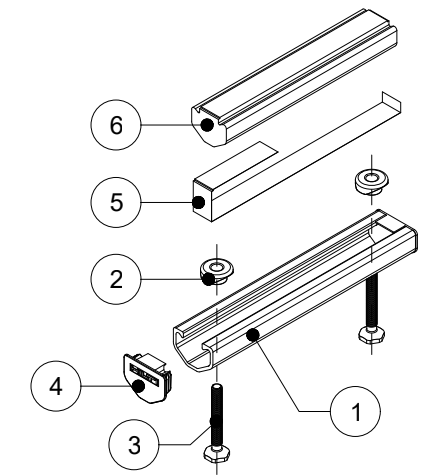
ITEM	DESCRIPTION	QUANTITY
1	CHANNEL PROFILE	1
2	RIVET CONNECTION	2
3	ROUNDED HEADED ANCHOR	2
4	END CAP	2
5	TEAR OUT BAND	1
6	FILLER FOAM	1



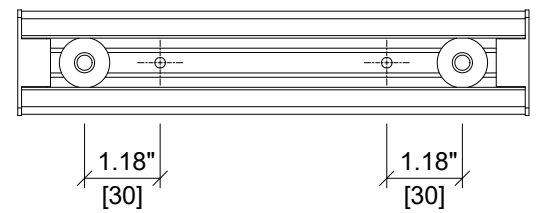
**ELEVATION VIEW**



**SECTION A-A'**



**ISOMETRIC VIEW**



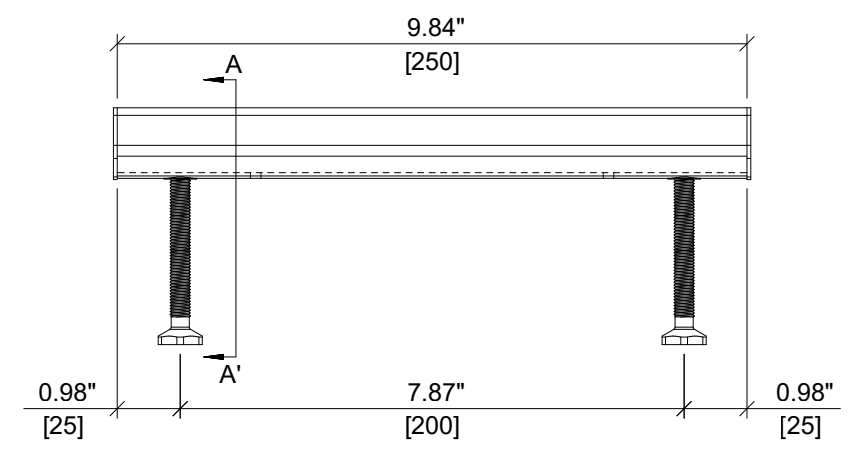
**PLAN VIEW**



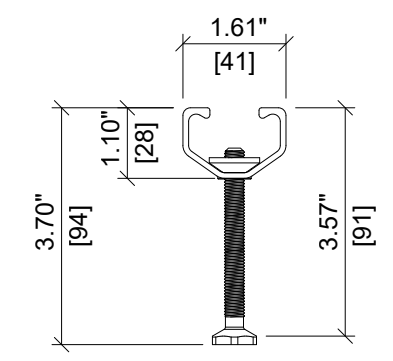
ITEM NUMBER: <b>2122491</b>	CHANNEL LIP: <b>SMOOTH</b>
ITEM DESCRIPTION: <b>HAC-40 91/200 F</b>	



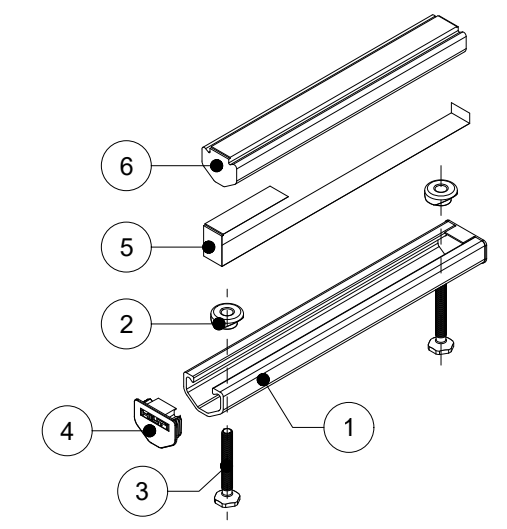
ITEM	DESCRIPTION	QUANTITY
1	CHANNEL PROFILE	1
2	RIVET CONNECTION	2
3	ROUNDED HEADED ANCHOR	2
4	END CAP	2
5	TEAR OUT BAND	1
6	FILLER FOAM	1



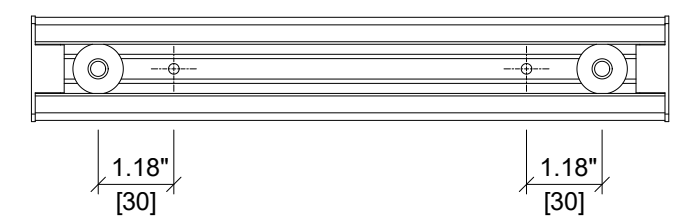
**ELEVATION VIEW**



**SECTION A-A'**



**ISOMETRIC VIEW**



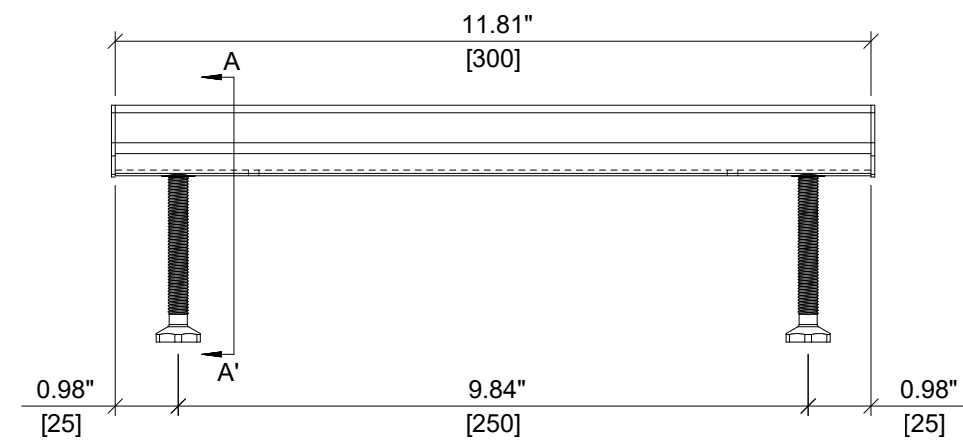
**PLAN VIEW**



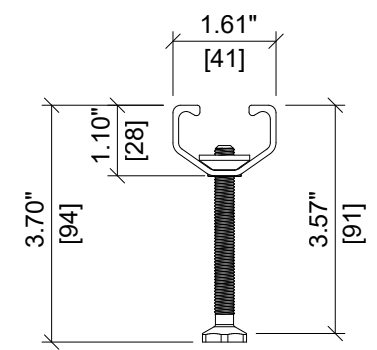
ITEM NUMBER: <b>2122492</b>	CHANNEL LIP: <b>SMOOTH</b>
ITEM DESCRIPTION: <b>HAC-40 91/250 F</b>	



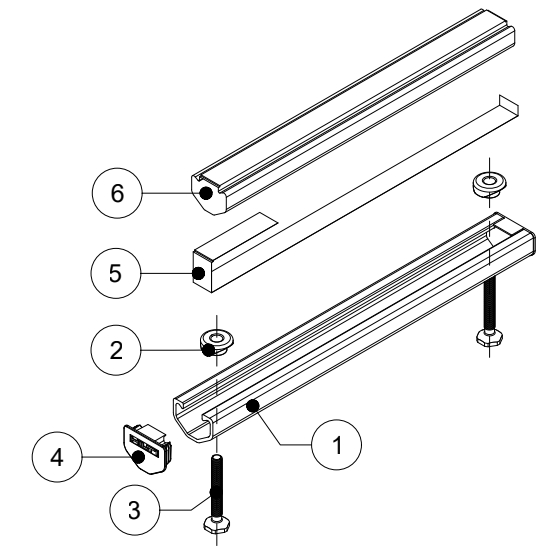
ITEM	DESCRIPTION	QUANTITY
1	CHANNEL PROFILE	1
2	RIVET CONNECTION	2
3	ROUNDED HEADED ANCHOR	2
4	END CAP	2
5	TEAR OUT BAND	1
6	FILLER FOAM	1



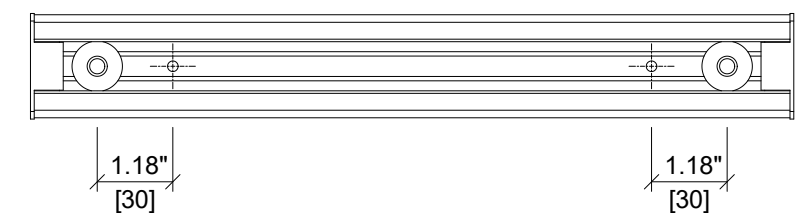
**ELEVATION VIEW**



**SECTION A-A'**



**ISOMETRIC VIEW**



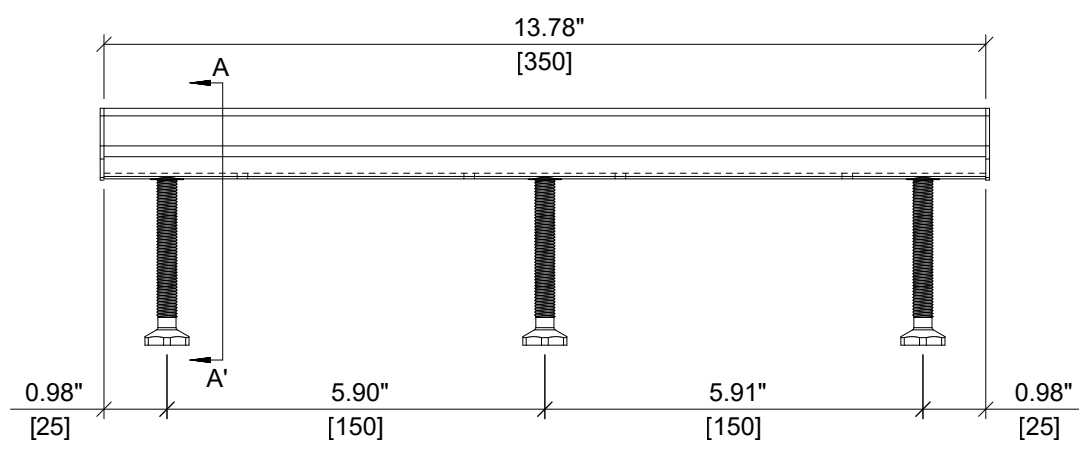
**PLAN VIEW**



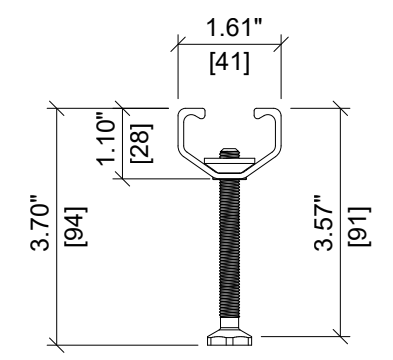
ITEM NUMBER: <b>2107349</b>	CHANNEL LIP: <b>SMOOTH</b>
ITEM DESCRIPTION: <b>HAC-40 91/300 F</b>	



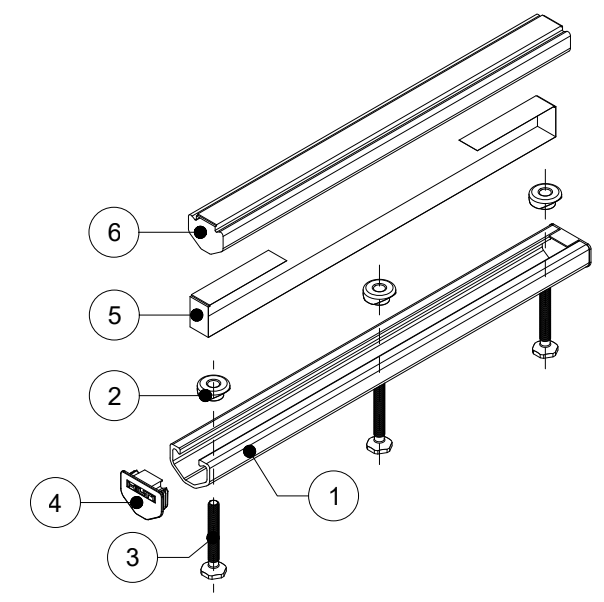
ITEM	DESCRIPTION	QUANTITY
1	CHANNEL PROFILE	1
2	RIVET CONNECTION	3
3	ROUNDED HEADED ANCHOR	3
4	END CAP	2
5	TEAR OUT BAND	1
6	FILLER FOAM	1



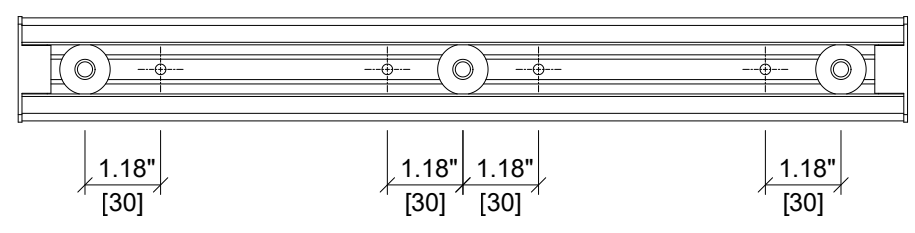
**ELEVATION VIEW**



**SECTION A-A'**



**ISOMETRIC VIEW**



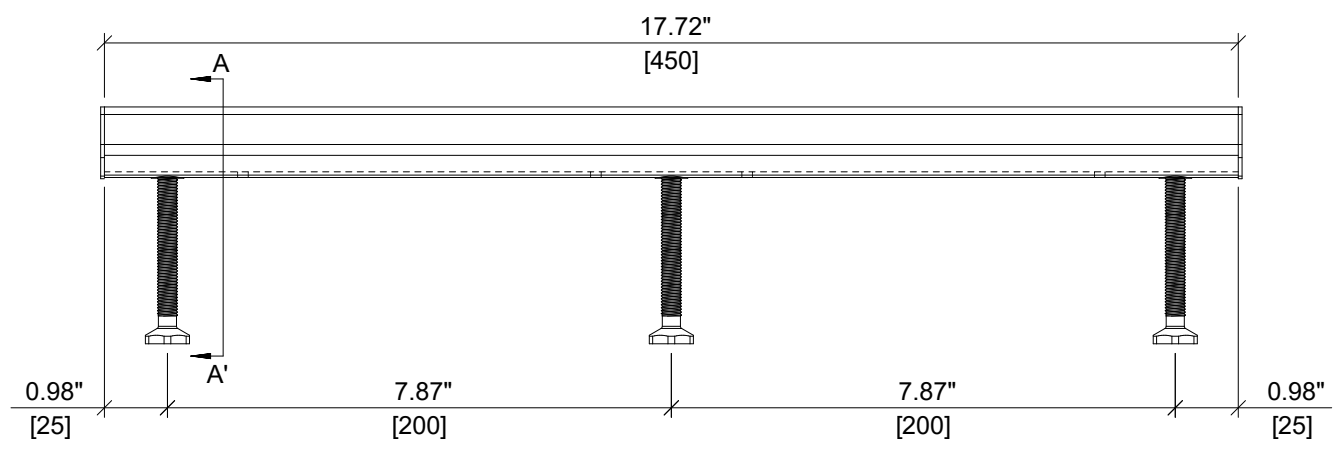
**PLAN VIEW**



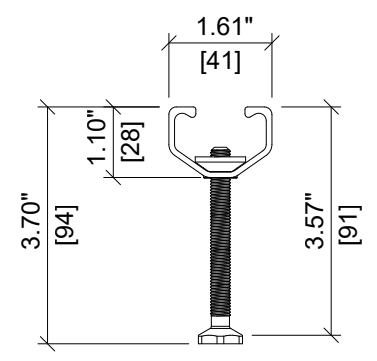
ITEM NUMBER: <b>2122493</b>	CHANNEL LIP: <b>SMOOTH</b>
ITEM DESCRIPTION: <b>HAC-40 91/350 F</b>	



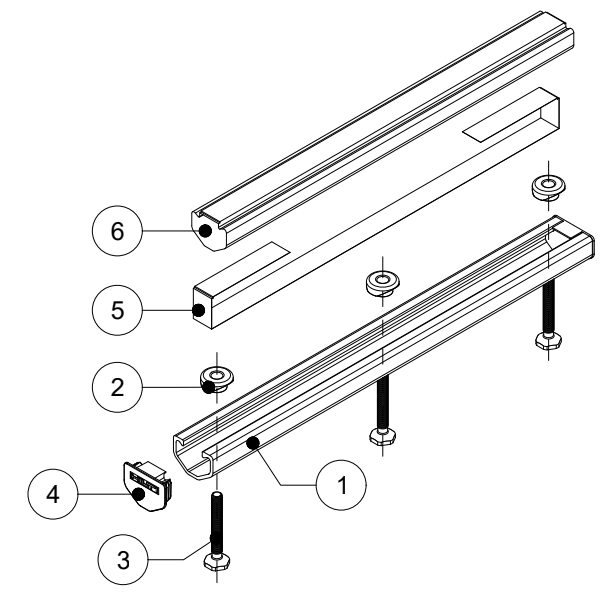
ITEM	DESCRIPTION	QUANTITY
1	CHANNEL PROFILE	1
2	RIVET CONNECTION	3
3	ROUNDED HEADED ANCHOR	3
4	END CAP	2
5	TEAR OUT BAND	1
6	FILLER FOAM	1



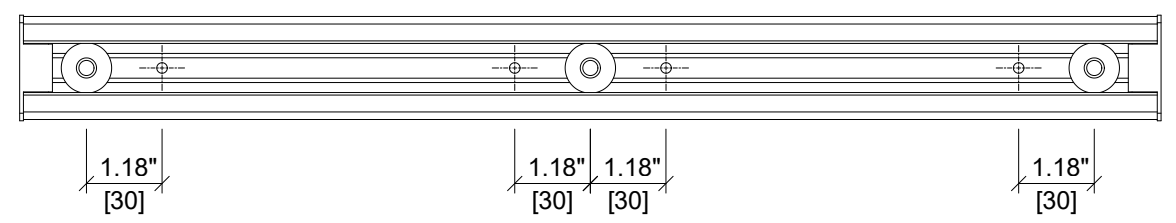
**ELEVATION VIEW**



**SECTION A-A'**



**ISOMETRIC VIEW**



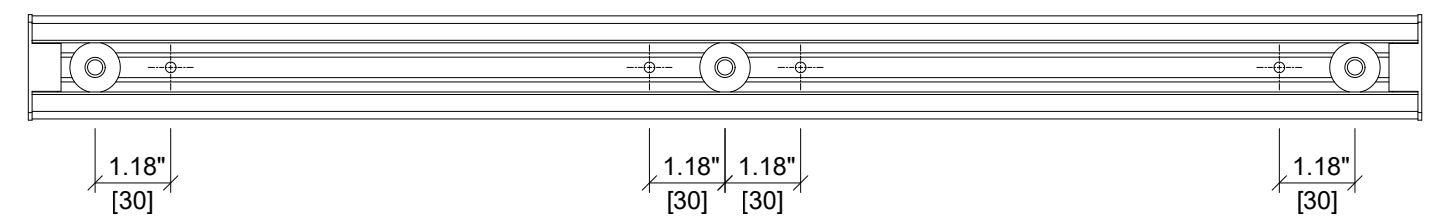
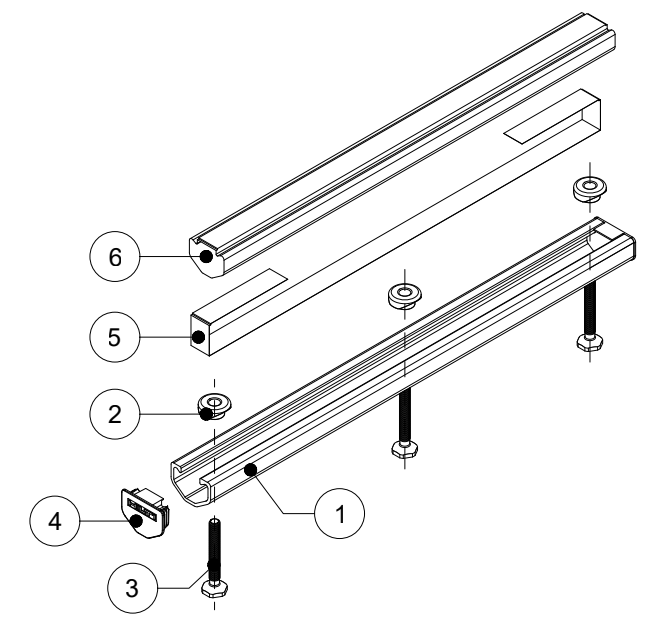
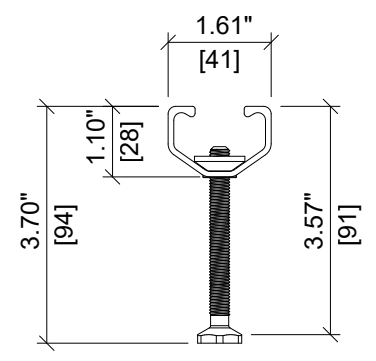
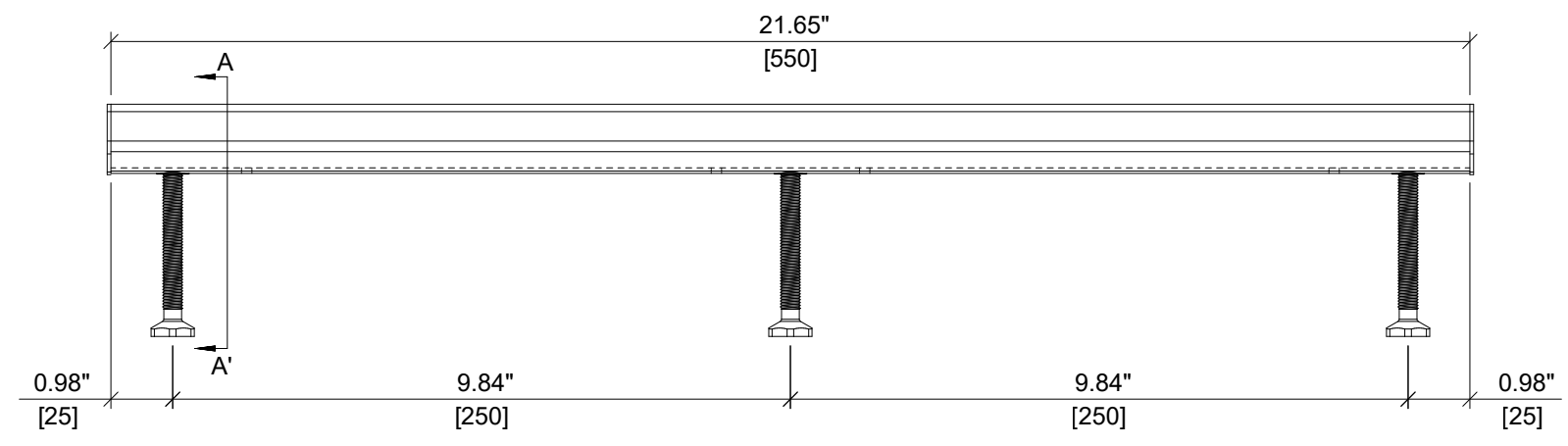
**PLAN VIEW**



ITEM NUMBER: <b>2122494</b>	CHANNEL LIP: <b>SMOOTH</b>
ITEM DESCRIPTION: <b>HAC-40 91/450 F</b>	



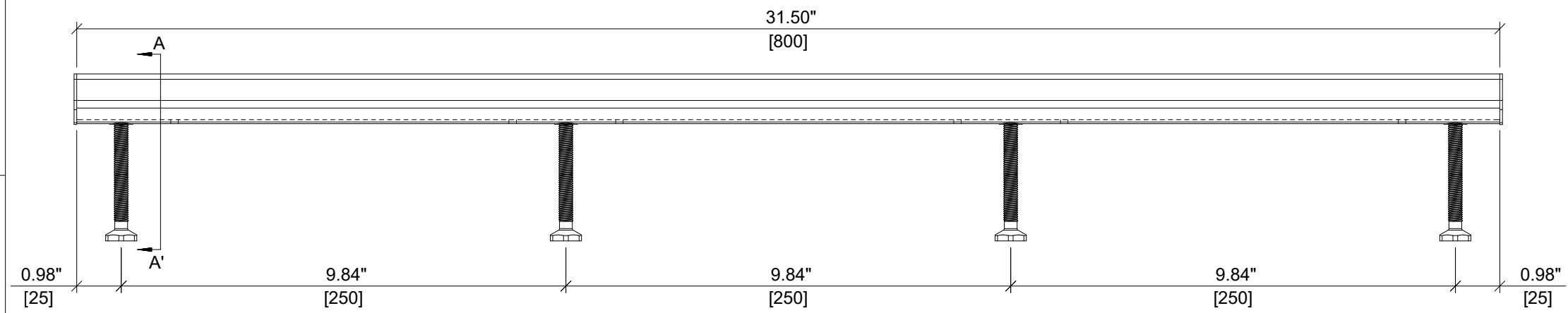
ITEM	DESCRIPTION	QUANTITY
1	CHANNEL PROFILE	1
2	RIVET CONNECTION	3
3	ROUNDED HEADED ANCHOR	3
4	END CAP	2
5	TEAR OUT BAND	1
6	FILLER FOAM	1



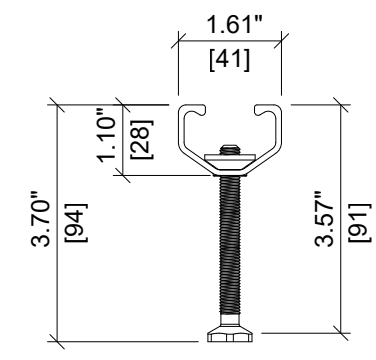
ITEM NUMBER: <b>2122495</b>	CHANNEL LIP: <b>SMOOTH</b>
ITEM DESCRIPTION: <b>HAC-40 91/550 F</b>	



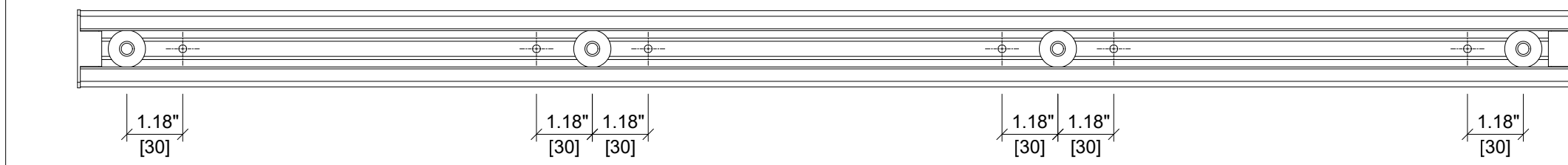
ITEM	DESCRIPTION	QUANTITY
1	CHANNEL PROFILE	1
2	RIVET CONNECTION	4
3	ROUNDED HEADED ANCHOR	4
4	END CAP	2
5	TEAR OUT BAND	1
6	FILLER FOAM	1



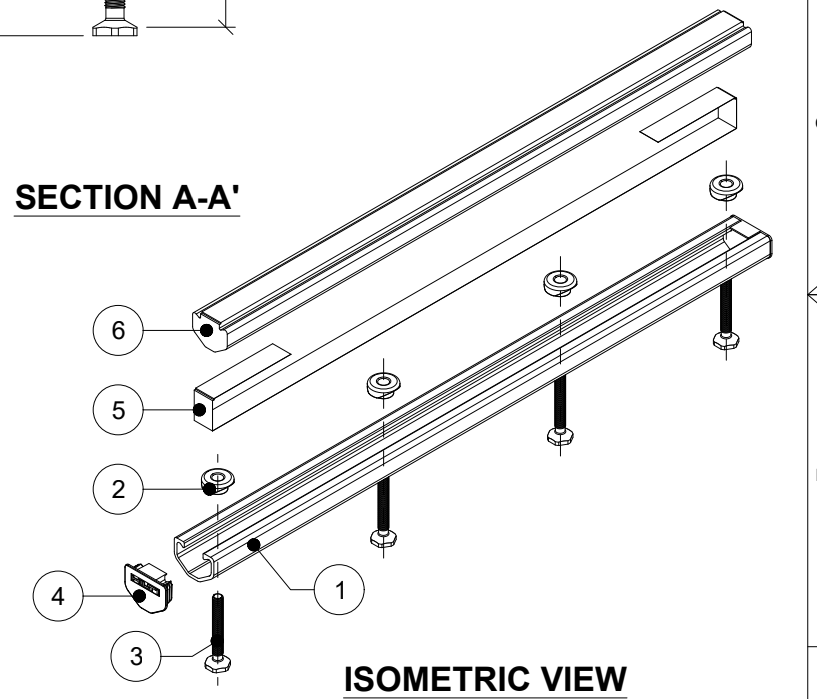
**ELEVATION VIEW**



**SECTION A-A'**



**PLAN VIEW**



**ISOMETRIC VIEW**

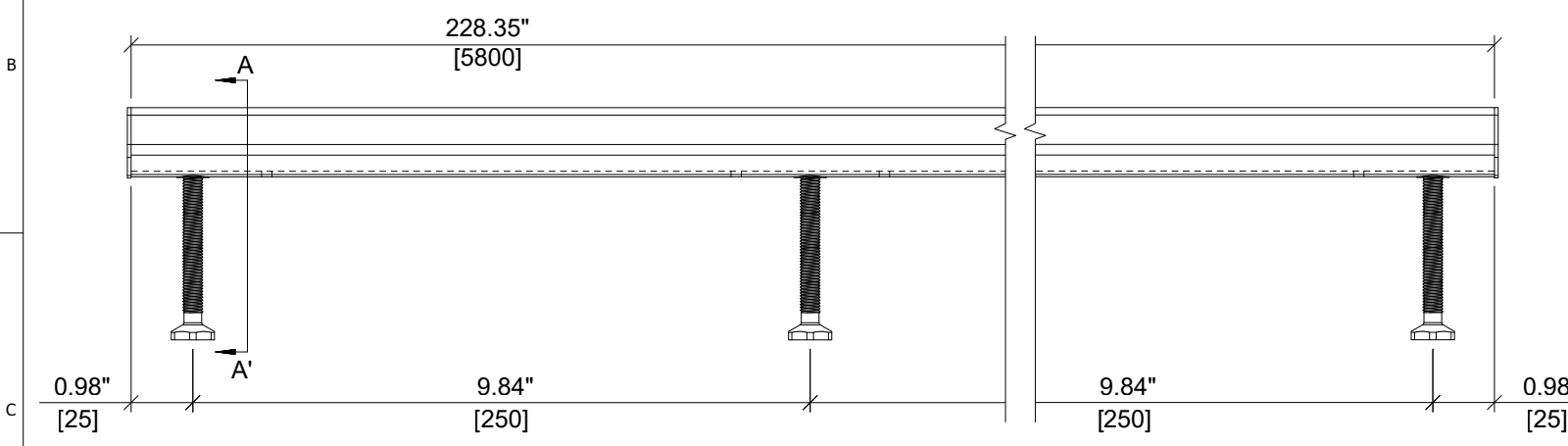


ITEM NUMBER: <b>2122496</b>	CHANNEL LIP: <b>SMOOTH</b>
ITEM DESCRIPTION: <b>HAC-40 91/800 F</b>	

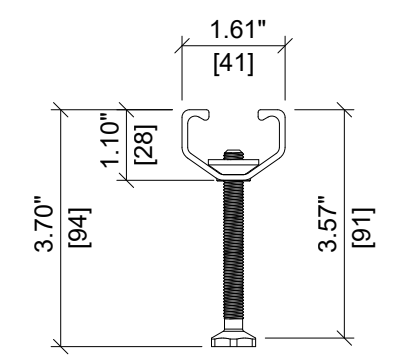




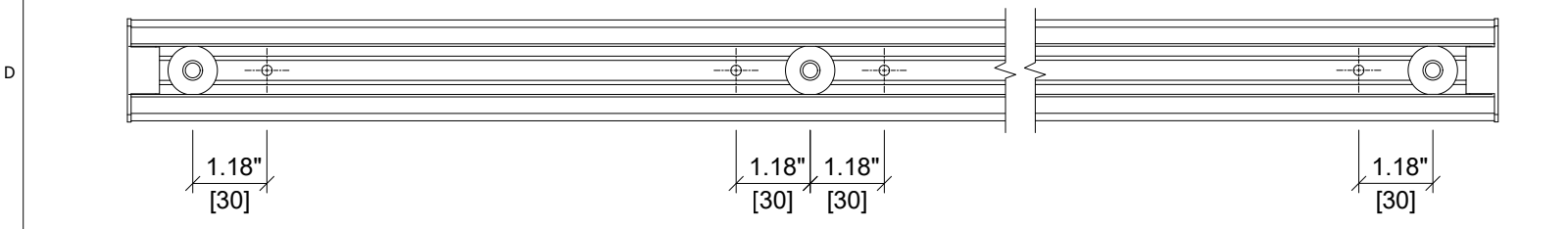
ITEM	DESCRIPTION	QUANTITY
1	CHANNEL PROFILE	1
2	RIVET CONNECTION	24
3	ROUNDED HEADED ANCHOR	24
4	END CAP	2
5	TEAR OUT BAND	1
6	FILLER FOAM	1



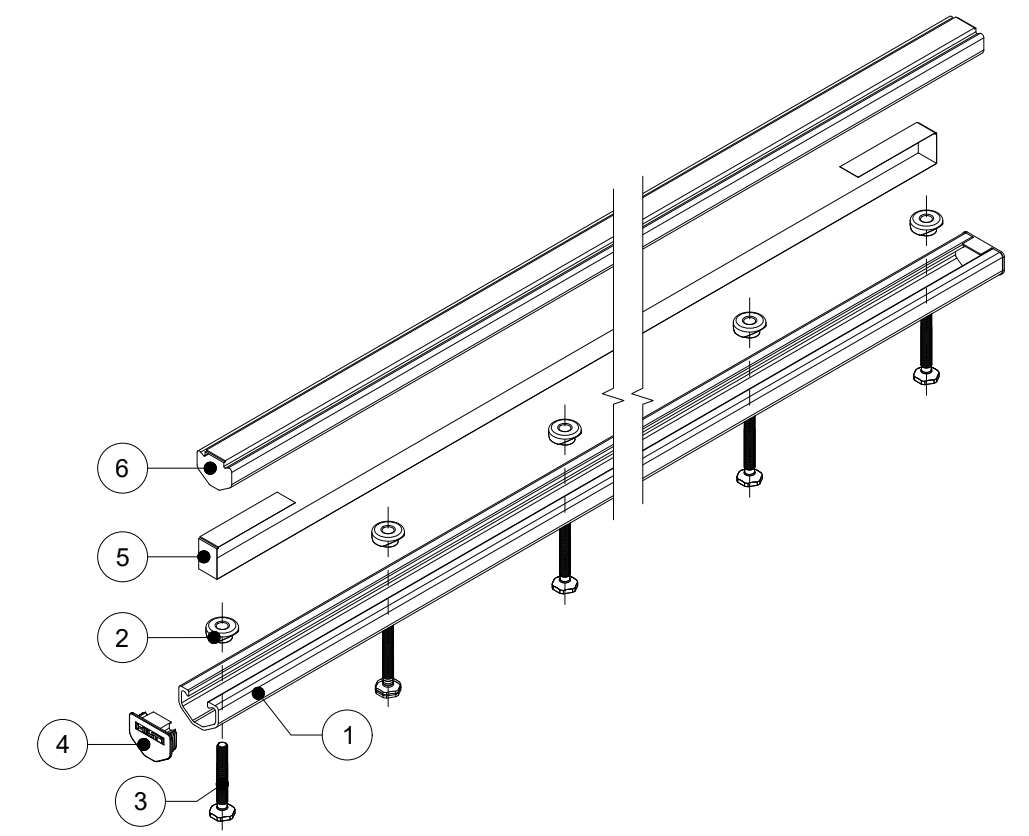
**ELEVATION VIEW**



**SECTION A-A'**



**PLAN VIEW**



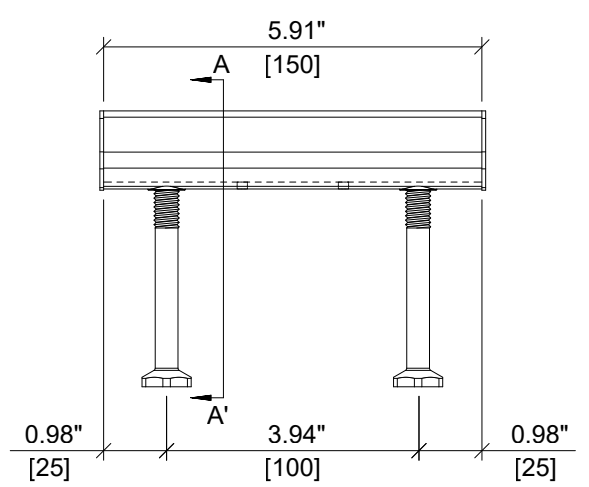
**ISOMETRIC VIEW**



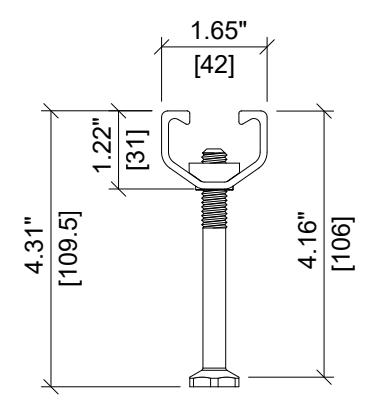
ITEM NUMBER: <b>2122536</b>	CHANNEL LIP: <b>SMOOTH</b>
ITEM DESCRIPTION: <b>HAC-40 91/5800 F</b>	



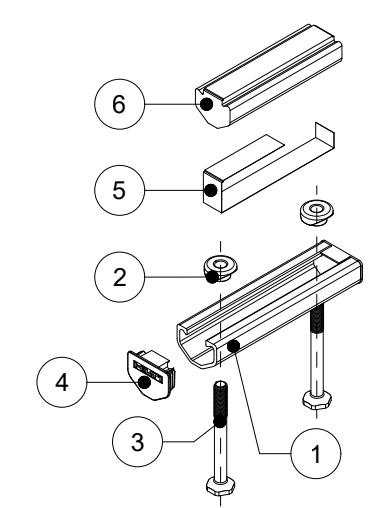
ITEM	DESCRIPTION	QUANTITY
1	CHANNEL PROFILE	1
2	RIVET CONNECTION	2
3	ROUNDED HEADED ANCHOR	2
4	END CAP	2
5	TEAR OUT BAND	1
6	FILLER FOAM	1



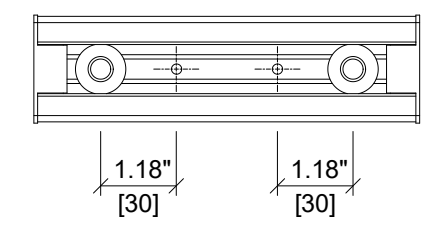
**ELEVATION VIEW**



**SECTION A-A'**



**ISOMETRIC VIEW**



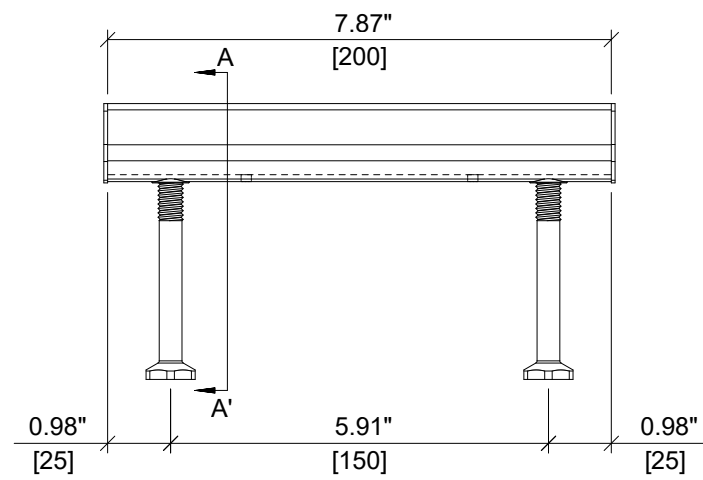
**PLAN VIEW**

**HILTI**

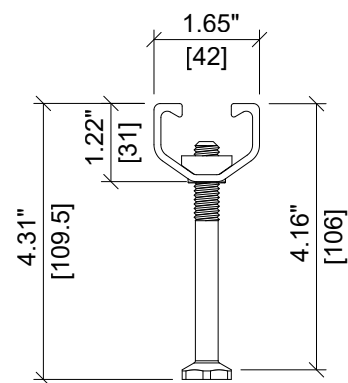
ITEM NUMBER: <div style="font-size: 18px; font-weight: bold;">2107510</div>	CHANNEL LIP: <div style="font-size: 18px; font-weight: bold;">SMOOTH</div>
ITEM DESCRIPTION: <div style="font-size: 18px; font-weight: bold;">HAC-50 106/150 F</div>	



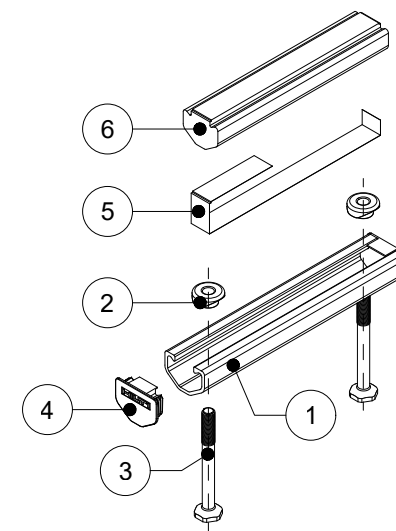
ITEM	DESCRIPTION	QUANTITY
1	CHANNEL PROFILE	1
2	RIVET CONNECTION	2
3	ROUNDED HEADED ANCHOR	2
4	END CAP	2
5	TEAR OUT BAND	1
6	FILLER FOAM	1



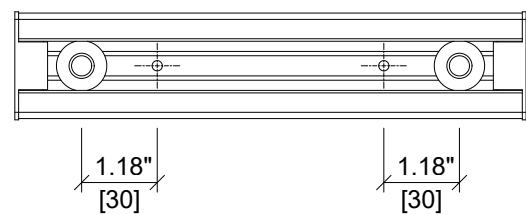
**ELEVATION VIEW**



**SECTION A-A'**



**ISOMETRIC VIEW**



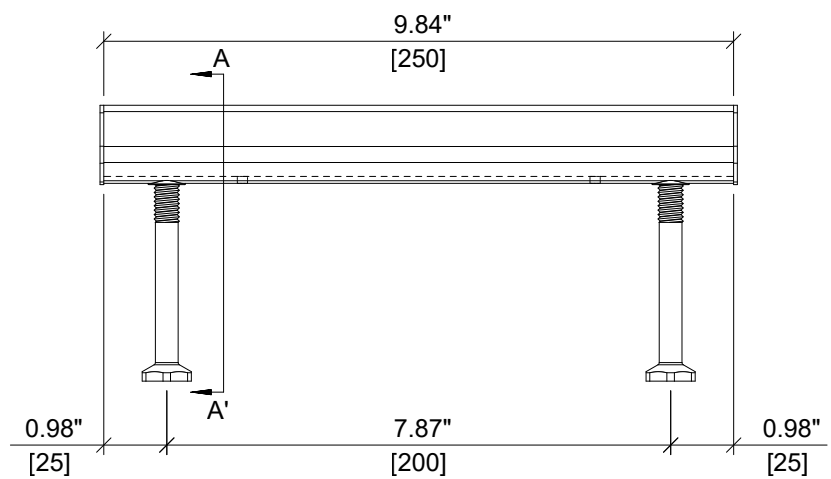
**PLAN VIEW**



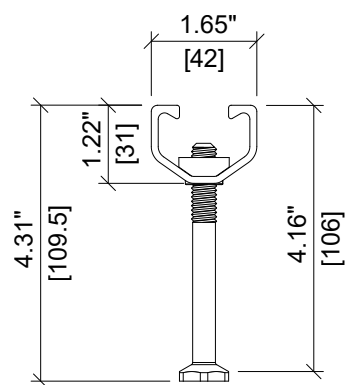
ITEM NUMBER: <b>2122537</b>	CHANNEL LIP: <b>SMOOTH</b>
ITEM DESCRIPTION: <b>HAC-50 106/200 F</b>	



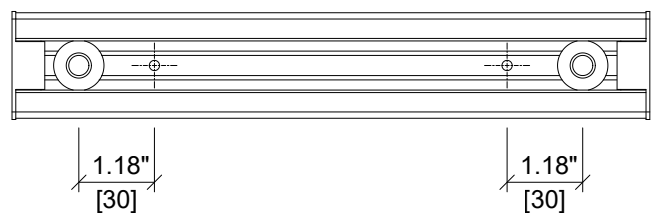
ITEM	DESCRIPTION	QUANTITY
1	CHANNEL PROFILE	1
2	RIVET CONNECTION	2
3	ROUNDED HEADED ANCHOR	2
4	END CAP	2
5	TEAR OUT BAND	1
6	FILLER FOAM	1



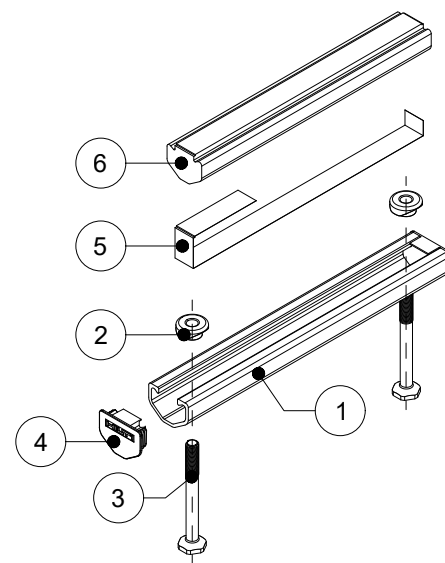
**ELEVATION VIEW**



**SECTION A-A'**



**PLAN VIEW**



**ISOMETRIC VIEW**



ITEM NUMBER:  
2122538

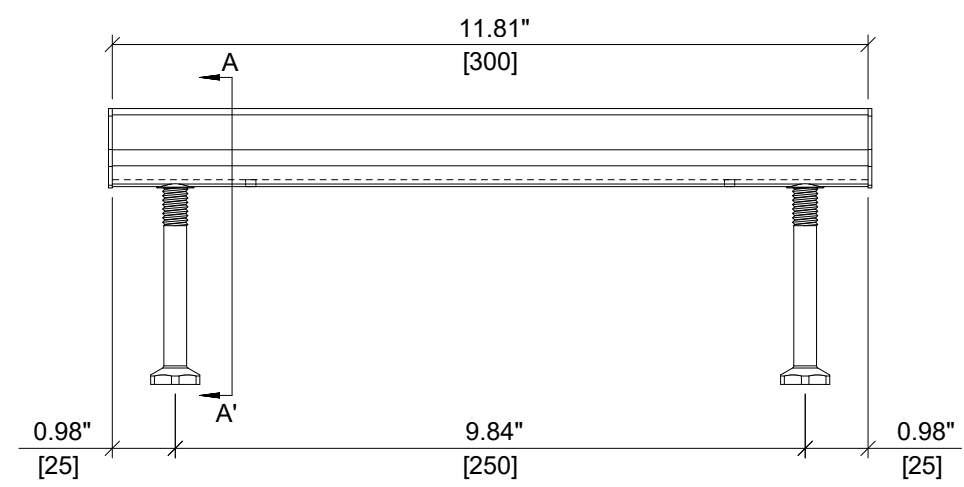
CHANNEL LIP:  
SMOOTH



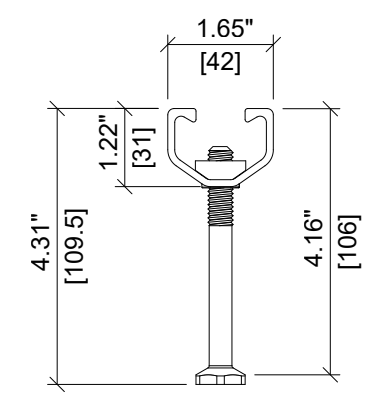
ITEM DESCRIPTION:  
HAC-50 106/250 F



ITEM	DESCRIPTION	QUANTITY
1	CHANNEL PROFILE	1
2	RIVET CONNECTION	2
3	ROUNDED HEADED ANCHOR	2
4	END CAP	2
5	TEAR OUT BAND	1
6	FILLER FOAM	1



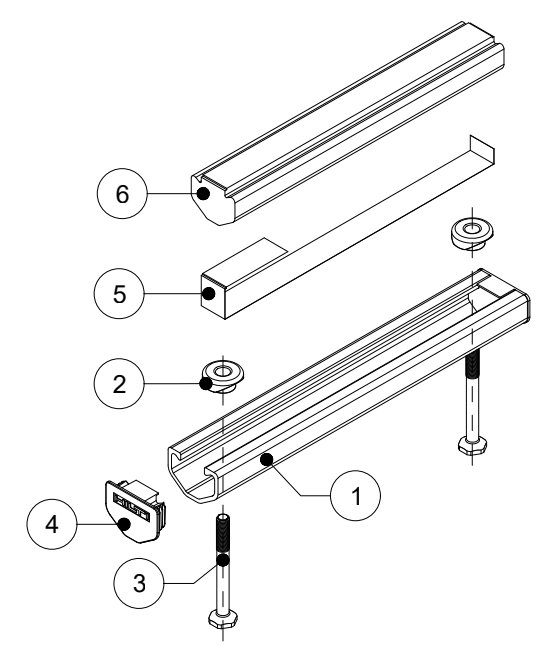
**ELEVATION VIEW**



**SECTION A-A'**



**PLAN VIEW**



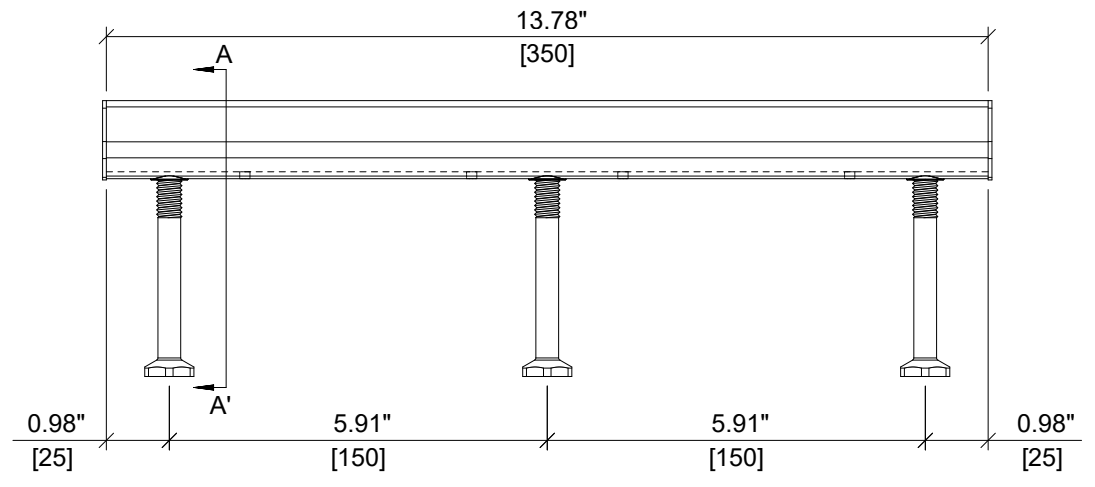
**ISOMETRIC VIEW**



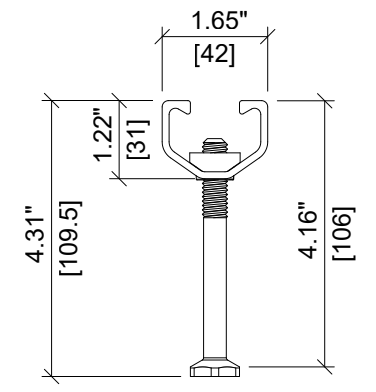
ITEM NUMBER: <b>2107511</b>	CHANNEL LIP: <b>SMOOTH</b>
ITEM DESCRIPTION: <b>HAC-50 106/300 F</b>	



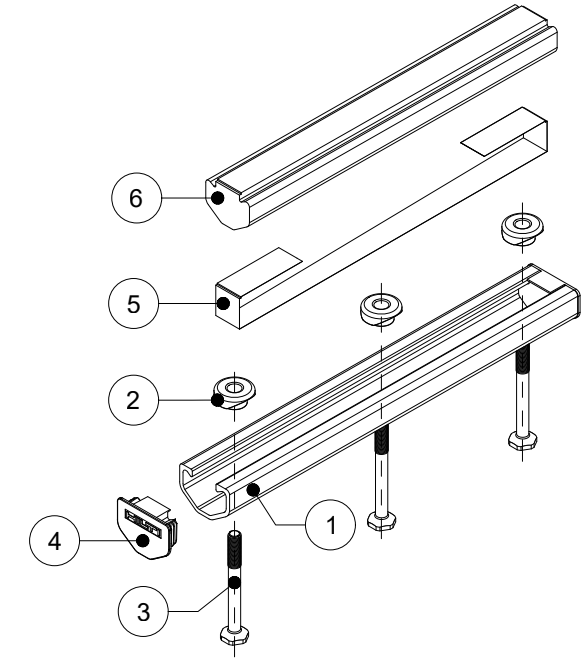
ITEM	DESCRIPTION	QUANTITY
1	CHANNEL PROFILE	1
2	RIVET CONNECTION	3
3	ROUNDED HEADED ANCHOR	3
4	END CAP	2
5	TEAR OUT BAND	1
6	FILLER FOAM	1



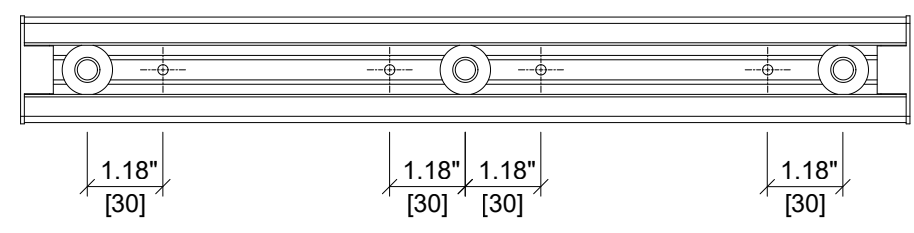
**ELEVATION VIEW**



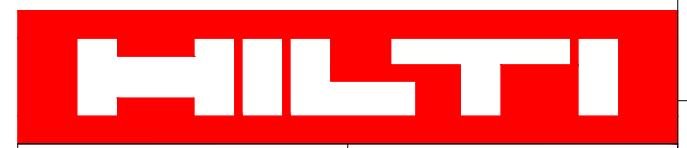
**SECTION A-A'**



**ISOMETRIC VIEW**



**PLAN VIEW**

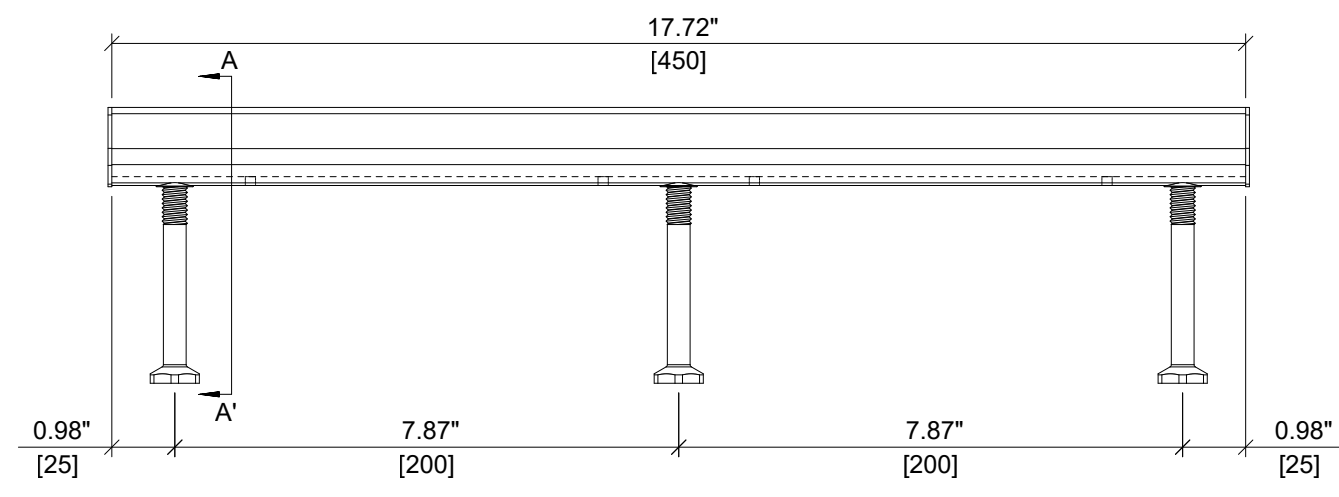


ITEM NUMBER: <b>2122539</b>	CHANNEL LIP: <b>SMOOTH</b>
--------------------------------	-------------------------------

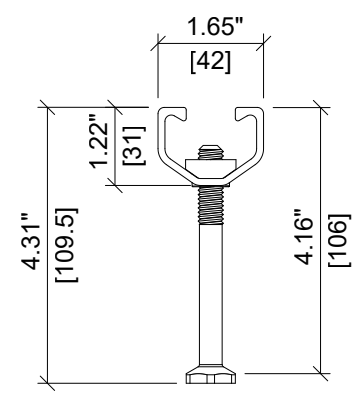
ITEM DESCRIPTION:  
**HAC-50 106/350 F**



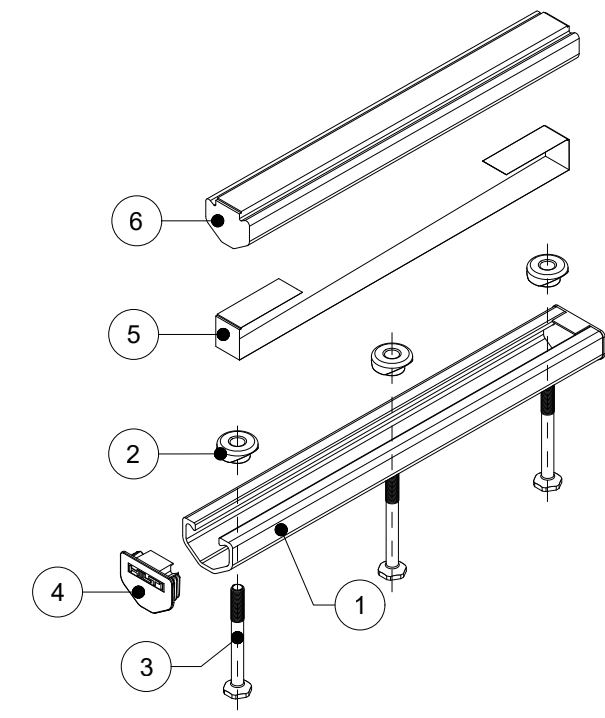
ITEM	DESCRIPTION	QUANTITY
1	CHANNEL PROFILE	1
2	RIVET CONNECTION	3
3	ROUNDED HEADED ANCHOR	3
4	END CAP	2
5	TEAR OUT BAND	1
6	FILLER FOAM	1



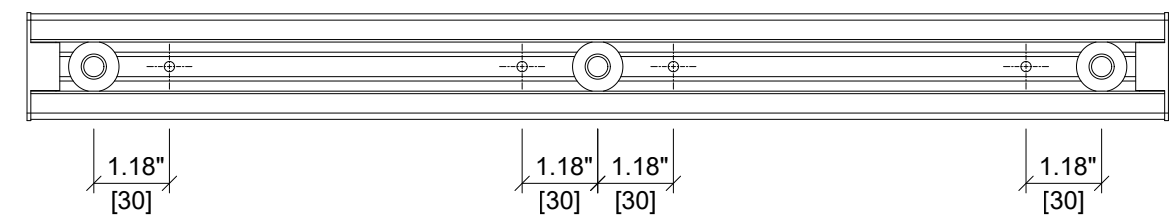
**ELEVATION VIEW**



**SECTION A-A'**



**ISOMETRIC VIEW**



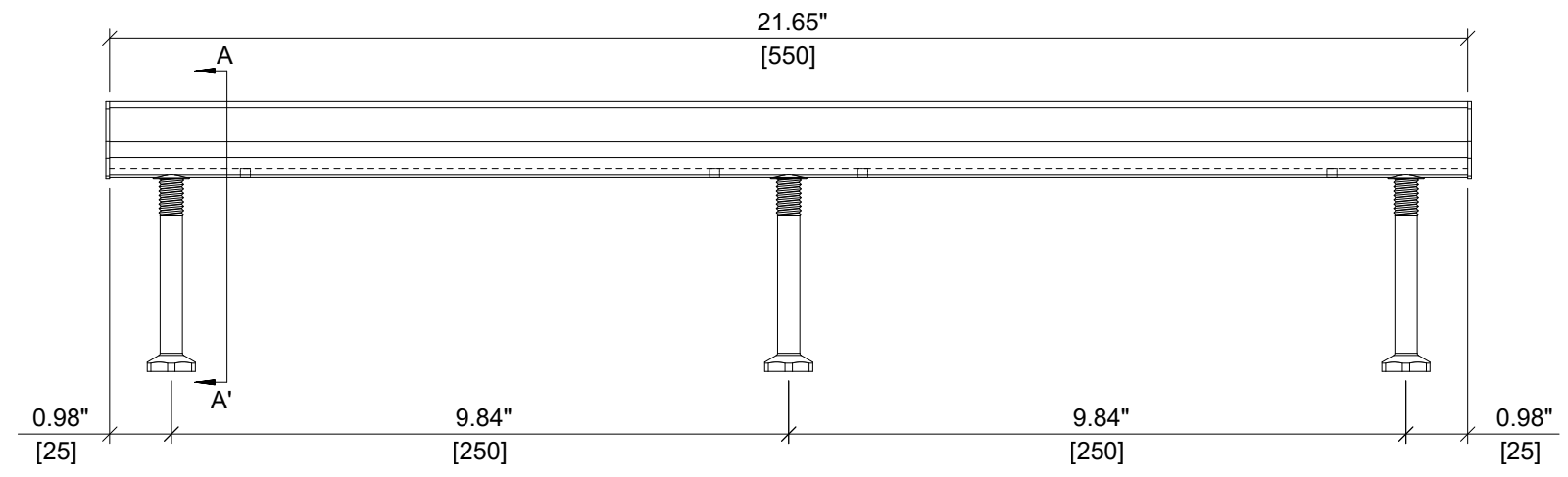
**PLAN VIEW**



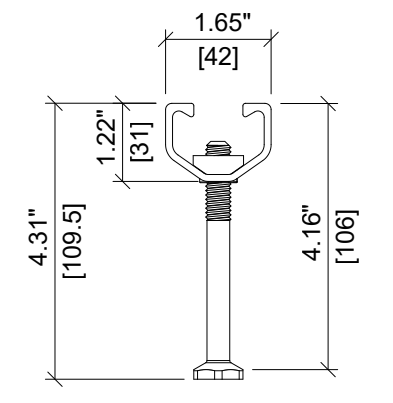
ITEM NUMBER: <b>2122540</b>	CHANNEL LIP: <b>SMOOTH</b>
ITEM DESCRIPTION: <b>HAC-50 106/450 F</b>	



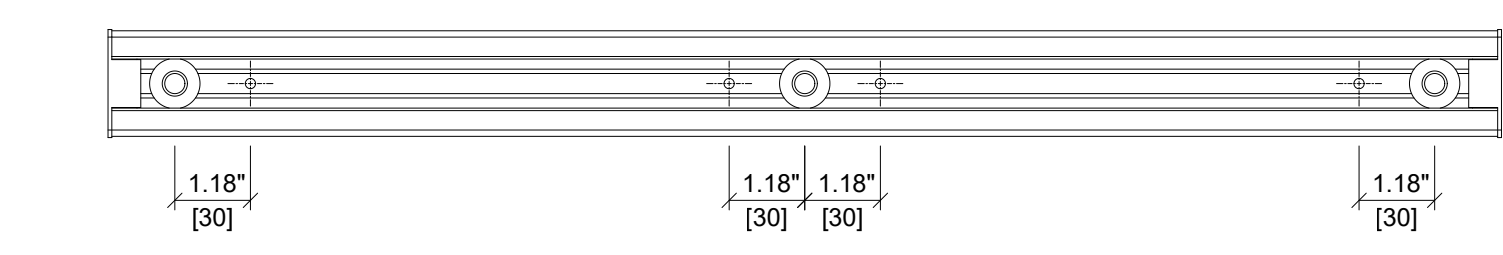
ITEM	DESCRIPTION	QUANTITY
1	CHANNEL PROFILE	1
2	RIVET CONNECTION	3
3	ROUNDED HEADED ANCHOR	3
4	END CAP	2
5	TEAR OUT BAND	1
6	FILLER FOAM	1



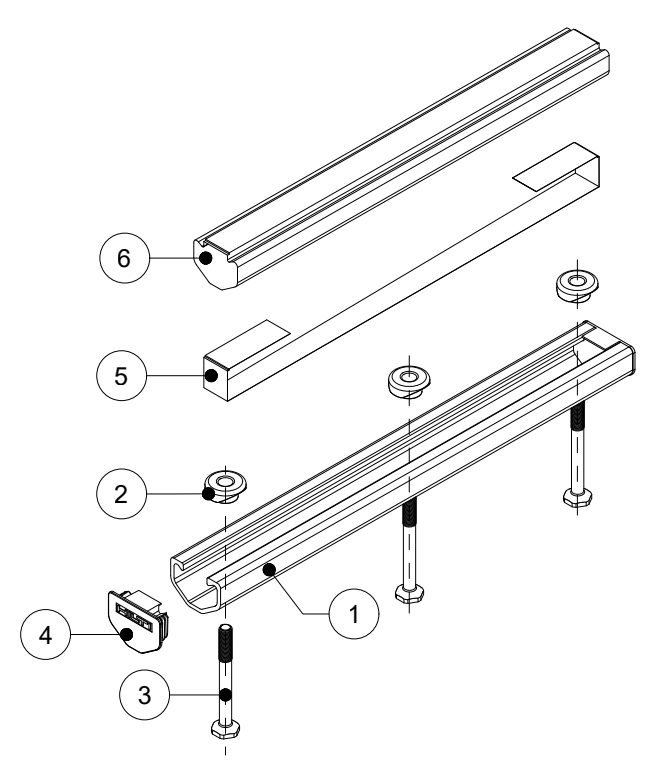
**ELEVATION VIEW**



**SECTION A-A'**



**PLAN VIEW**



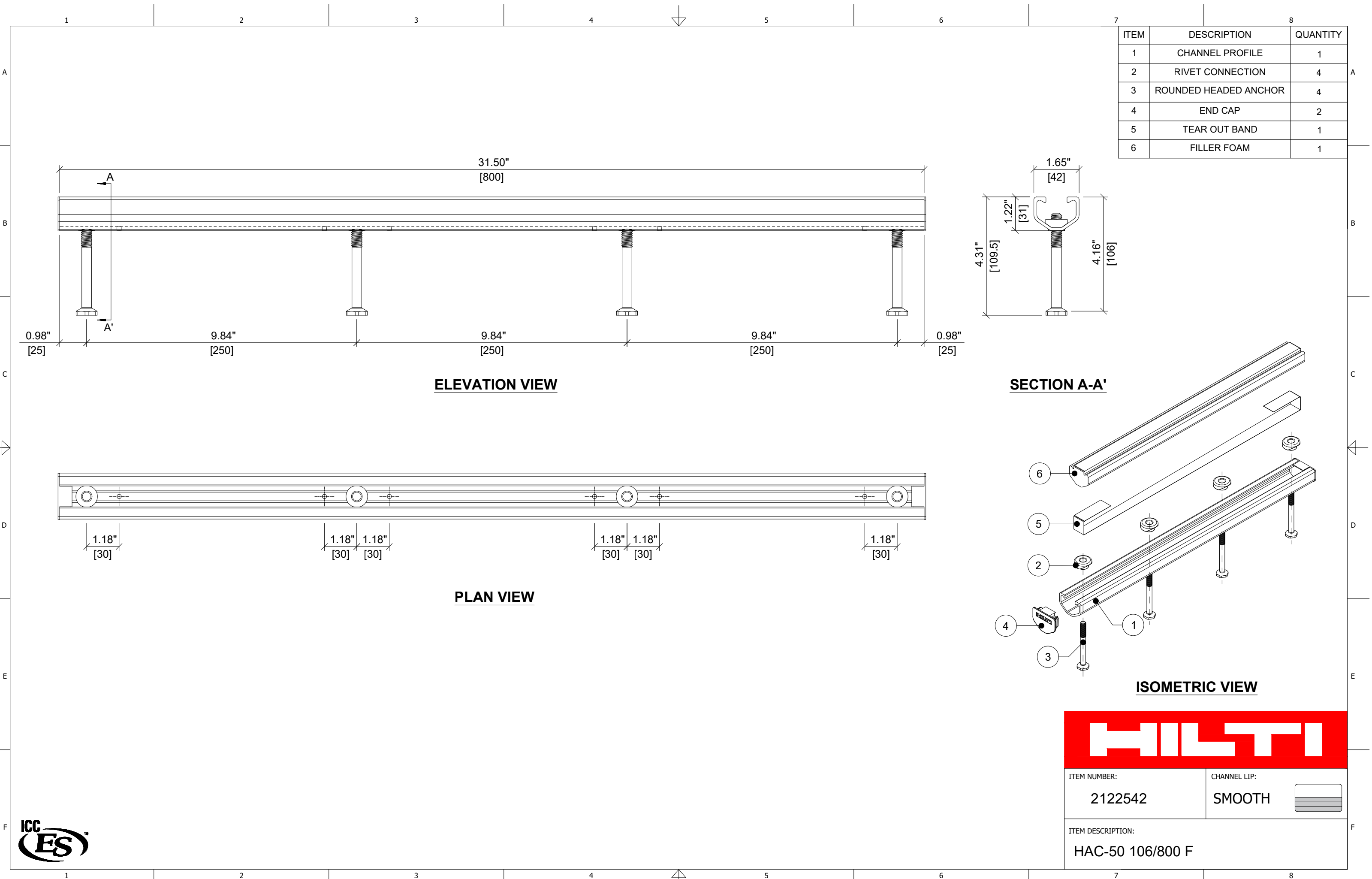
**ISOMETRIC VIEW**

**HILTI**

ITEM NUMBER: <div style="font-size: 18px; font-weight: bold;">2122541</div>	CHANNEL LIP: <div style="font-size: 18px; font-weight: bold;">SMOOTH</div>
ITEM DESCRIPTION: <div style="font-size: 18px; font-weight: bold;">HAC-50 106/550 F</div>	







ITEM	DESCRIPTION	QUANTITY
1	CHANNEL PROFILE	1
2	RIVET CONNECTION	4
3	ROUNDED HEADED ANCHOR	4
4	END CAP	2
5	TEAR OUT BAND	1
6	FILLER FOAM	1

**ELEVATION VIEW**

**PLAN VIEW**

**SECTION A-A'**

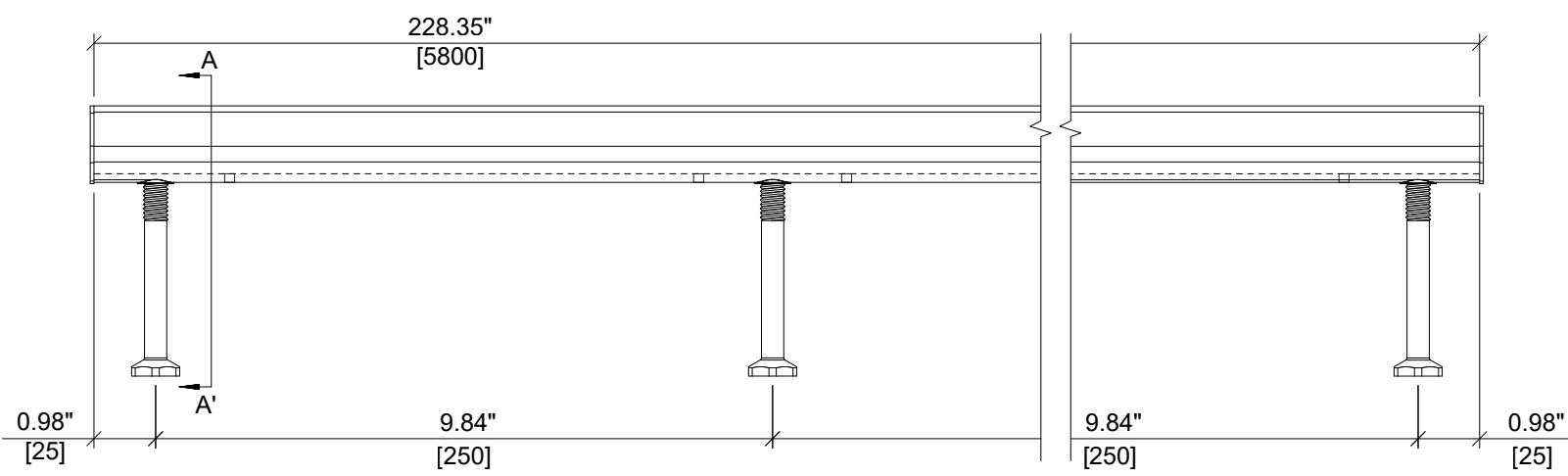
**ISOMETRIC VIEW**



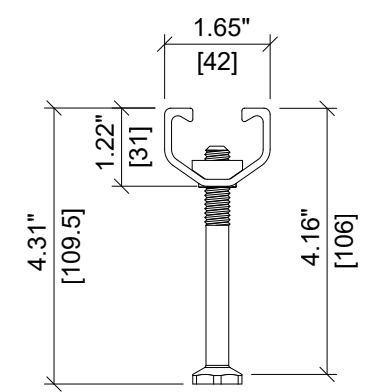
ITEM NUMBER: <b>2122542</b>	CHANNEL LIP: <b>SMOOTH</b>
ITEM DESCRIPTION: <b>HAC-50 106/800 F</b>	



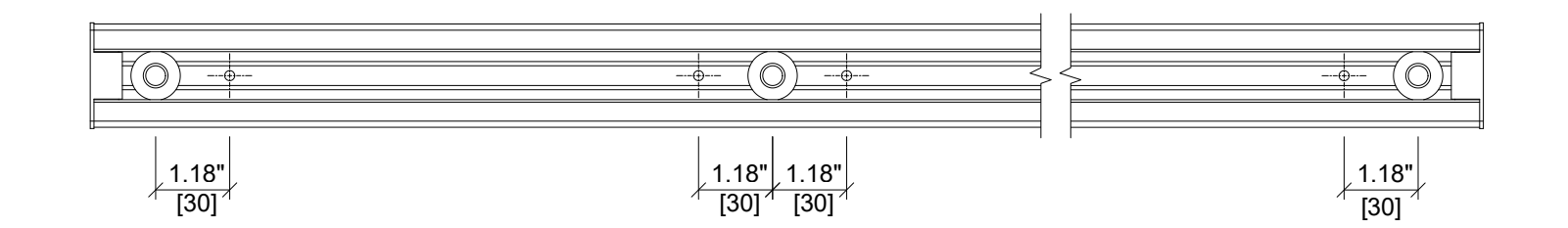
ITEM	DESCRIPTION	QUANTITY
1	CHANNEL PROFILE	1
2	RIVET CONNECTION	24
3	ROUNDED HEADED ANCHOR	24
4	END CAP	2
5	TEAR OUT BAND	1
6	FILLER FOAM	1



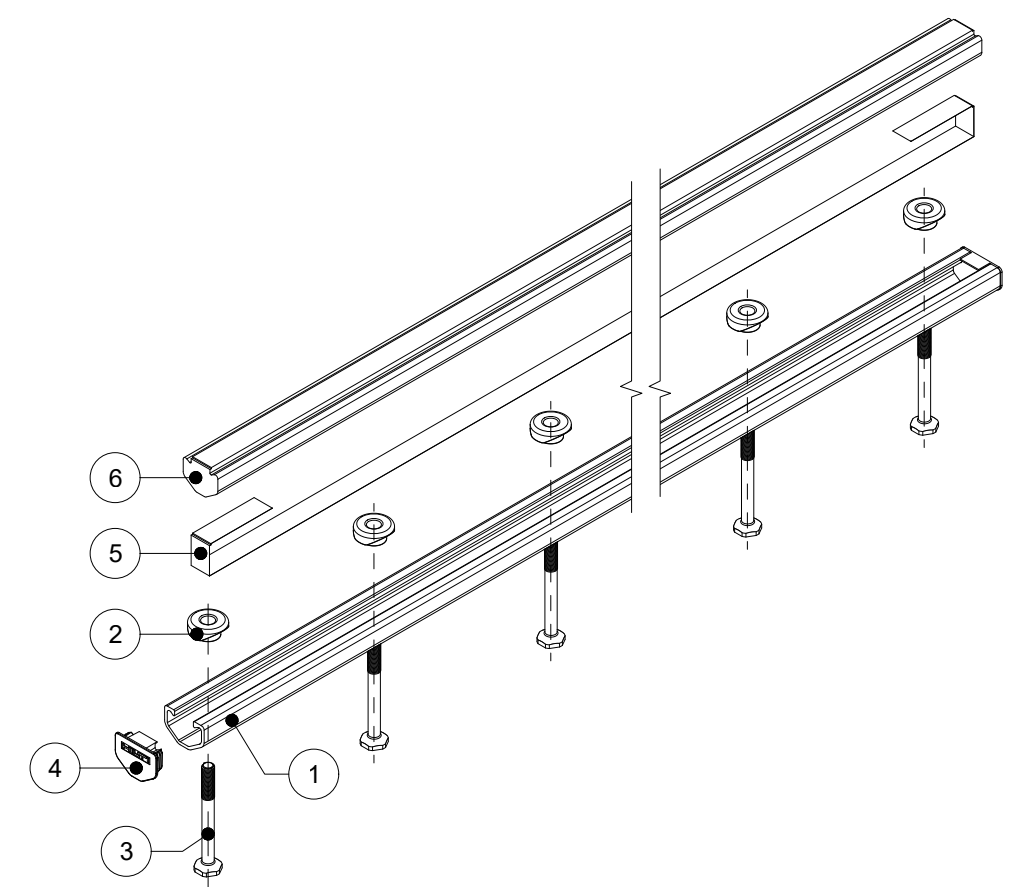
**ELEVATION VIEW**



**SECTION A-A'**



**PLAN VIEW**



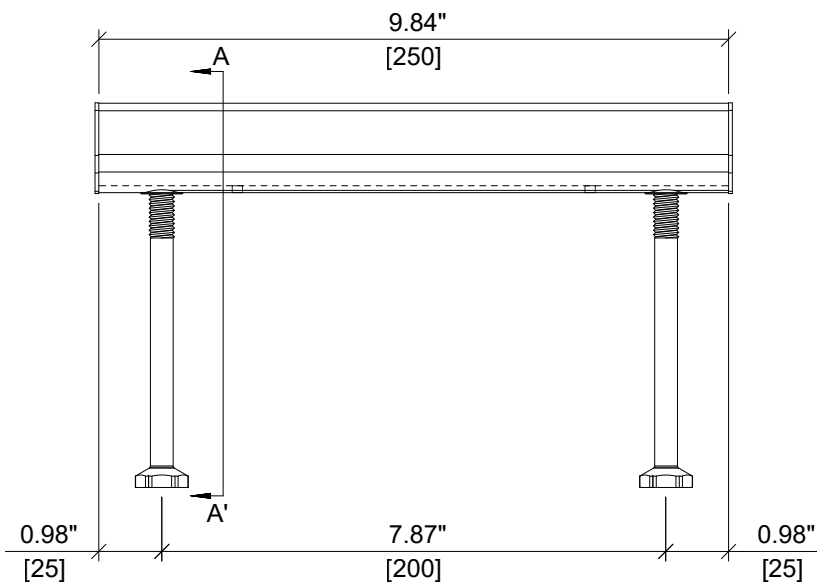
**ISOMETRIC VIEW**



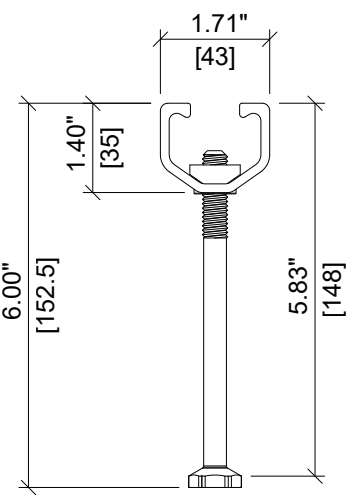
ITEM NUMBER: <b>2122553</b>	CHANNEL LIP: <b>SMOOTH</b>
ITEM DESCRIPTION: <b>HAC-50 106/5800 F</b>	



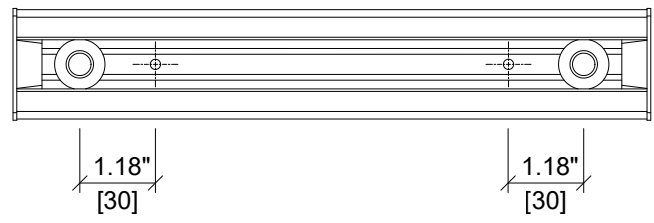
ITEM	DESCRIPTION	QUANTITY
1	CHANNEL PROFILE	1
2	RIVET CONNECTION	2
3	ROUNDED HEADED ANCHOR	2
4	END CAP	2
5	TEAR OUT BAND	1
6	FILLER FOAM	1



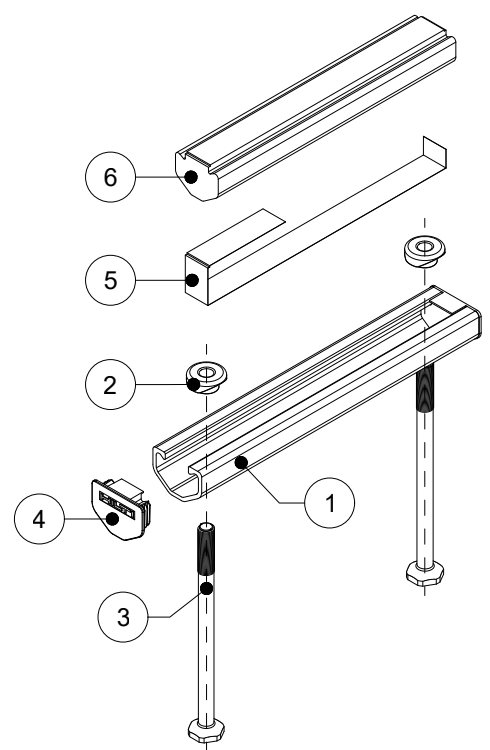
**ELEVATION VIEW**



**SECTION A-A'**



**PLAN VIEW**



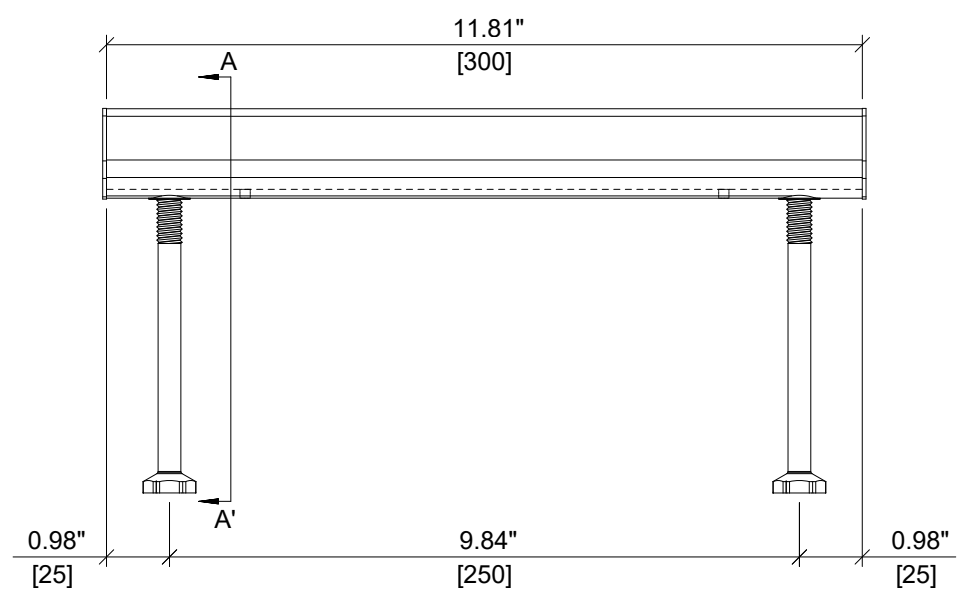
**ISOMETRIC VIEW**



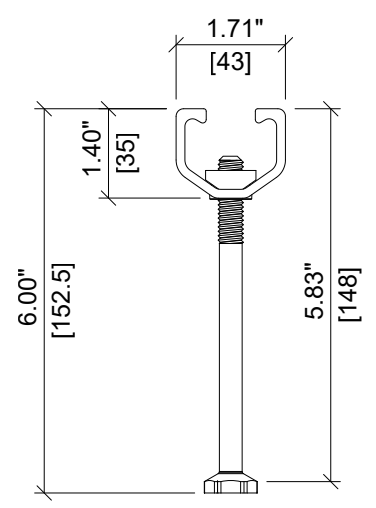
**HILTI**

ITEM NUMBER: <div style="font-size: 18px; font-weight: bold;">2075654</div>	CHANNEL LIP: <div style="font-size: 18px; font-weight: bold;">SMOOTH</div>
ITEM DESCRIPTION: <div style="font-size: 16px; font-weight: bold;">HAC-60 148/250 F</div>	

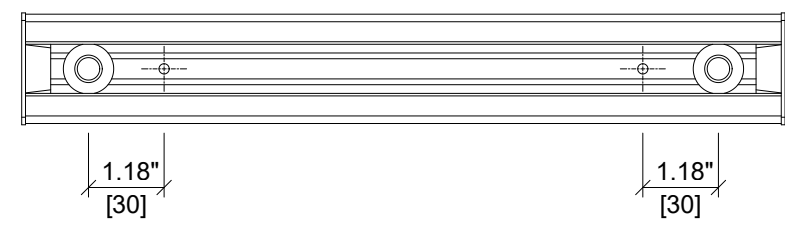
ITEM	DESCRIPTION	QUANTITY
1	CHANNEL PROFILE	1
2	RIVET CONNECTION	2
3	ROUNDED HEADED ANCHOR	2
4	END CAP	2
5	TEAR OUT BAND	1
6	FILLER FOAM	1



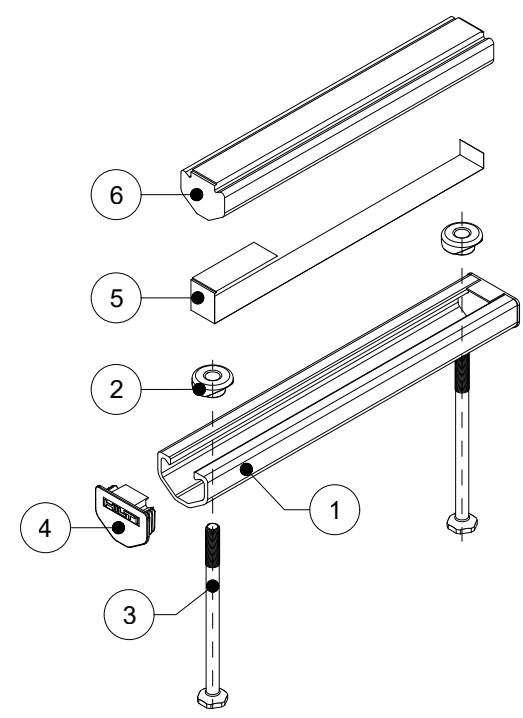
**ELEVATION VIEW**



**SECTION A-A'**



**PLAN VIEW**



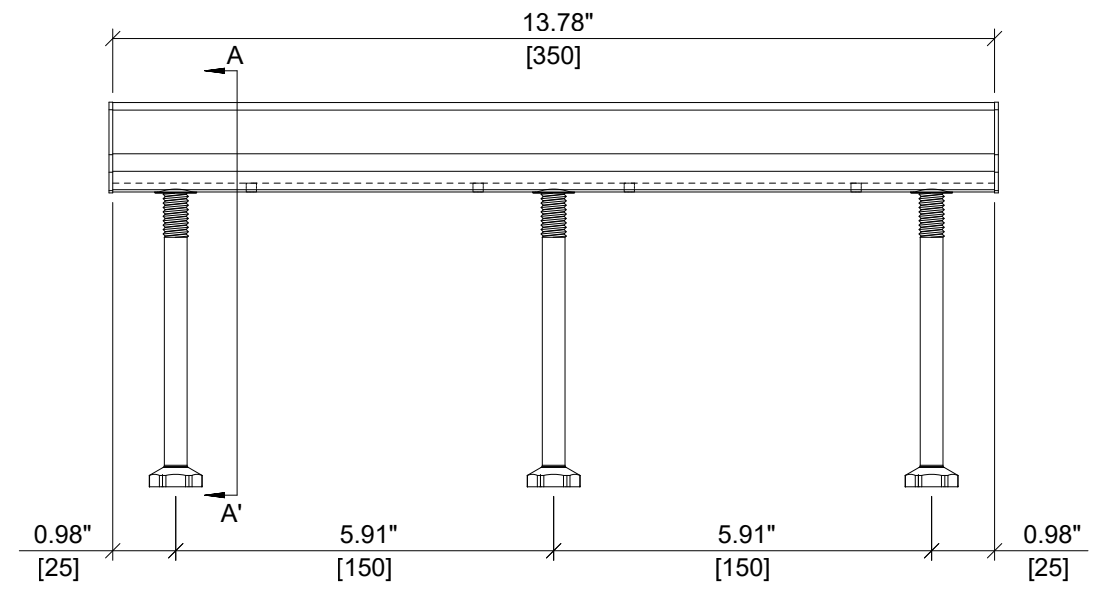
**ISOMETRIC VIEW**



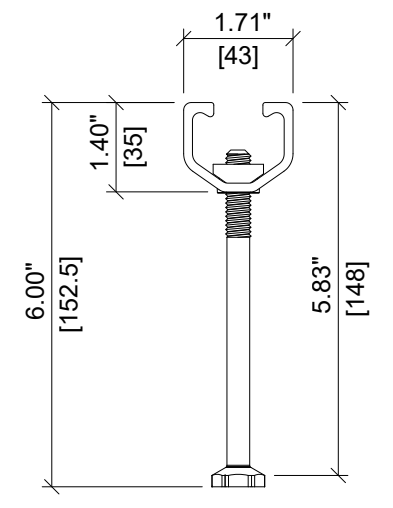
ITEM NUMBER: <b>431850</b>	CHANNEL LIP: <b>SMOOTH</b>
ITEM DESCRIPTION: <b>HAC-60 148/300 F</b>	



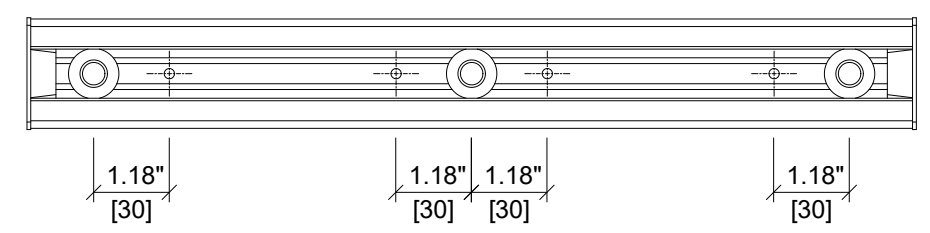
ITEM	DESCRIPTION	QUANTITY
1	CHANNEL PROFILE	1
2	RIVET CONNECTION	3
3	ROUNDED HEADED ANCHOR	3
4	END CAP	2
5	TEAR OUT BAND	1
6	FILLER FOAM	1



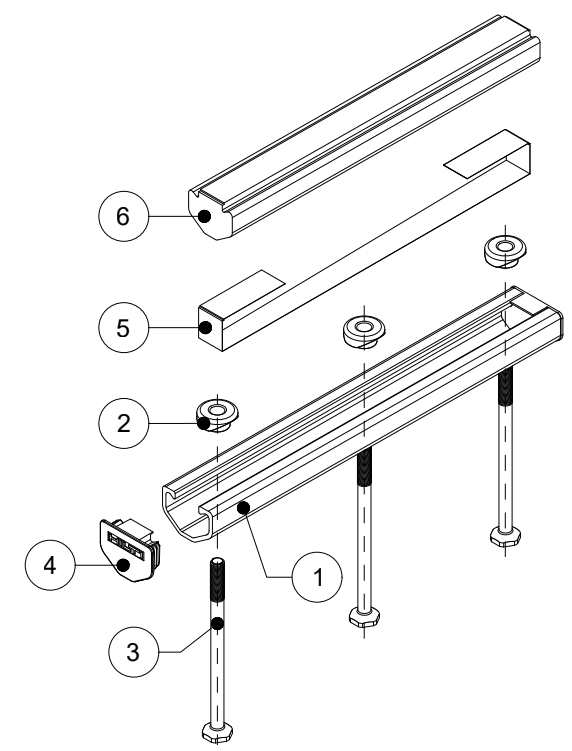
**ELEVATION VIEW**



**SECTION A-A'**



**PLAN VIEW**



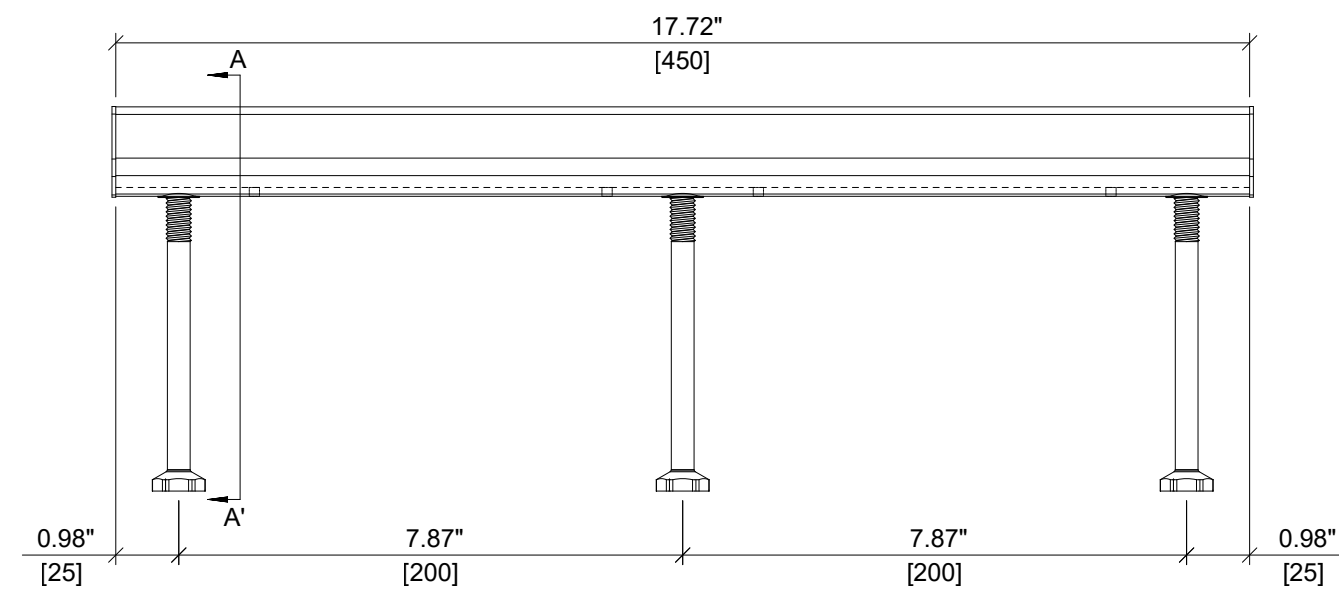
**ISOMETRIC VIEW**



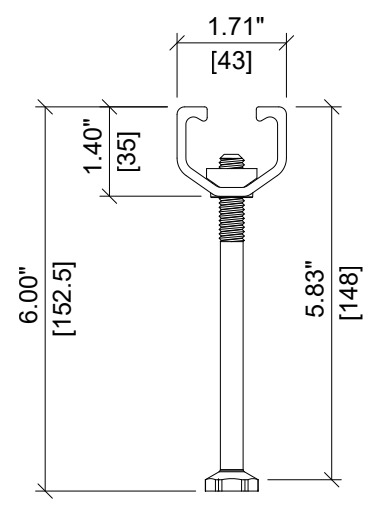
ITEM NUMBER: <b>431851</b>	CHANNEL LIP: <b>SMOOTH</b>
ITEM DESCRIPTION: <b>HAC-60 148/350 F</b>	



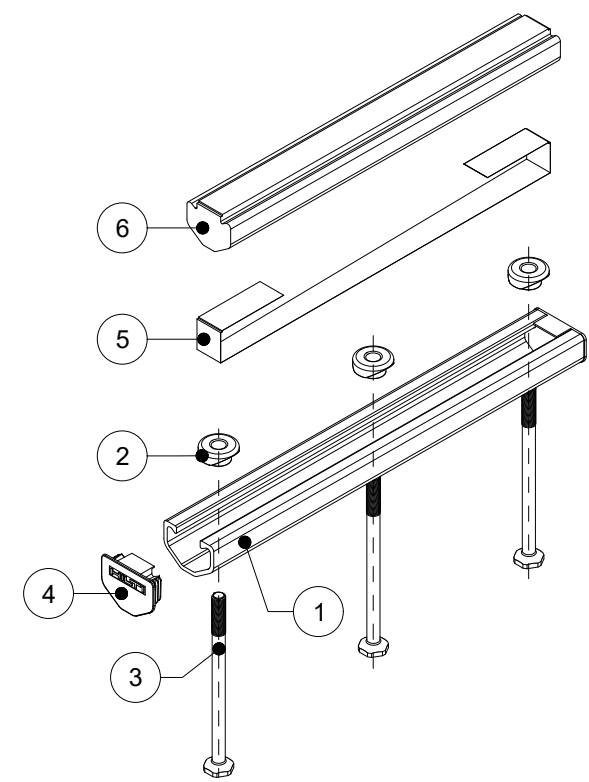
ITEM	DESCRIPTION	QUANTITY
1	CHANNEL PROFILE	1
2	RIVET CONNECTION	3
3	ROUNDED HEADED ANCHOR	3
4	END CAP	2
5	TEAR OUT BAND	1
6	FILLER FOAM	1



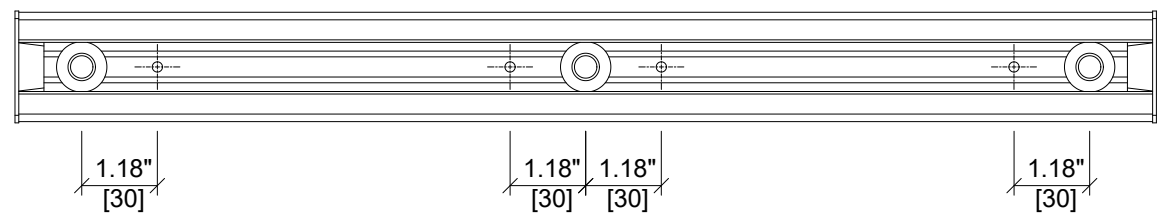
**ELEVATION VIEW**



**SECTION A-A'**



**ISOMETRIC VIEW**



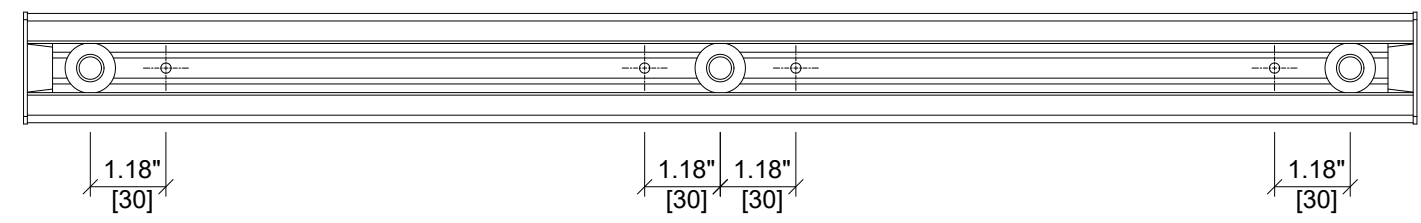
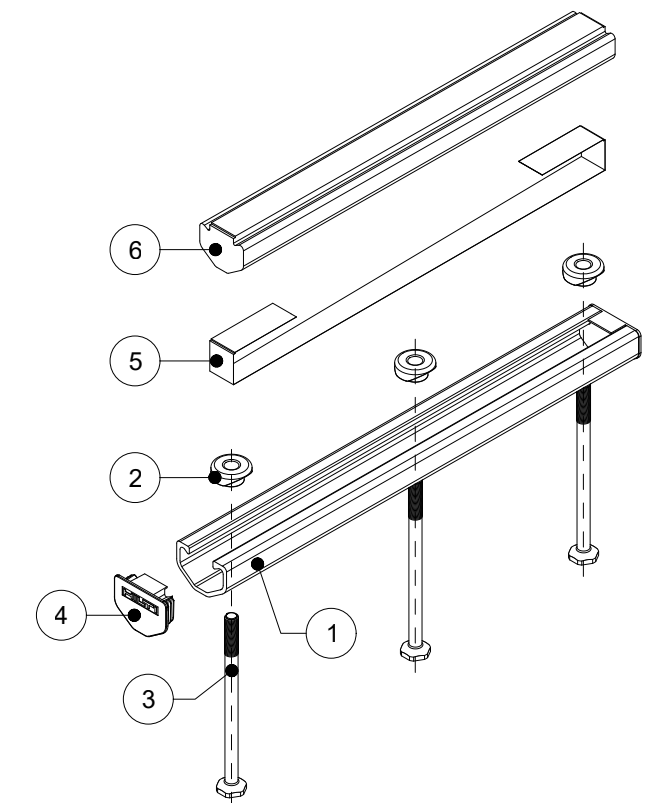
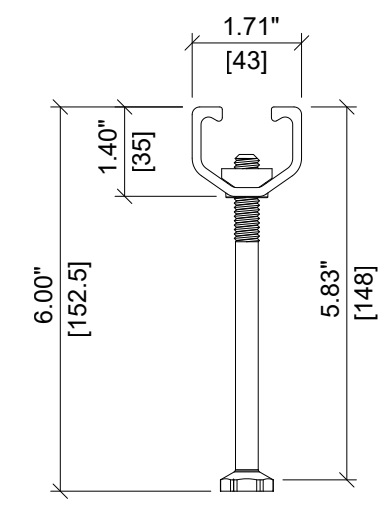
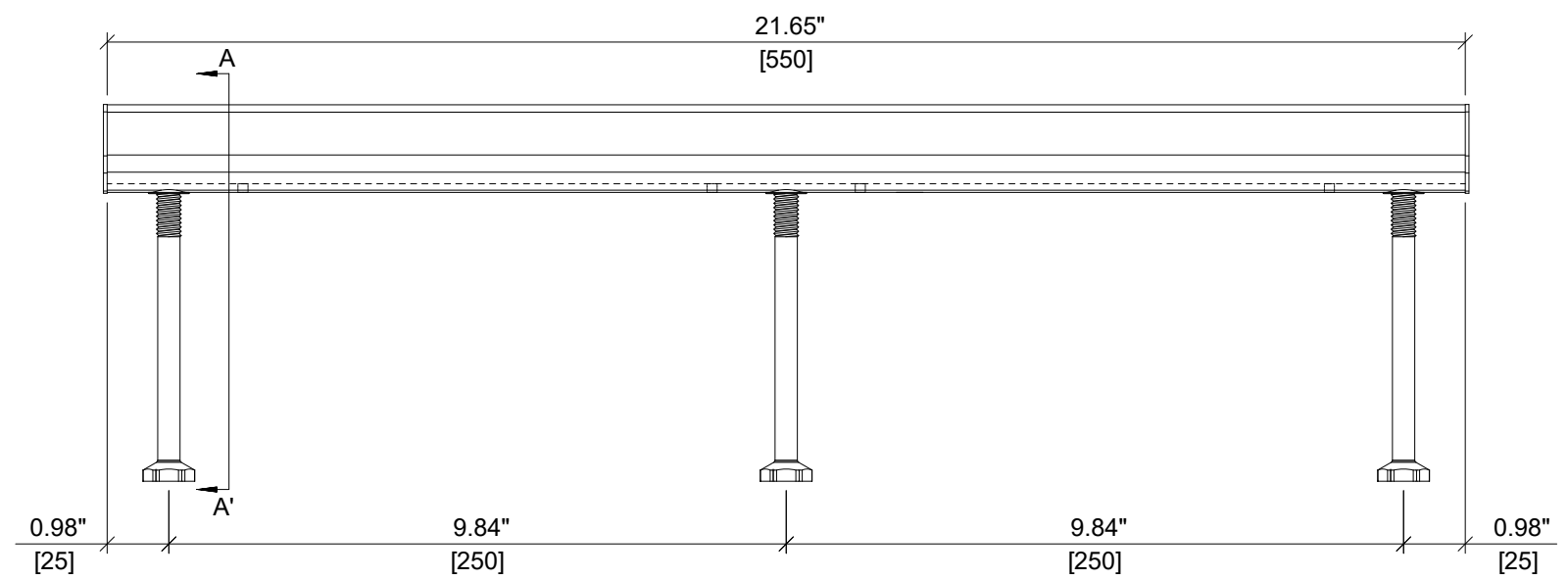
**PLAN VIEW**



ITEM NUMBER: <b>431852</b>	CHANNEL LIP: <b>SMOOTH</b>
ITEM DESCRIPTION: <b>HAC-60 148/450 F</b>	



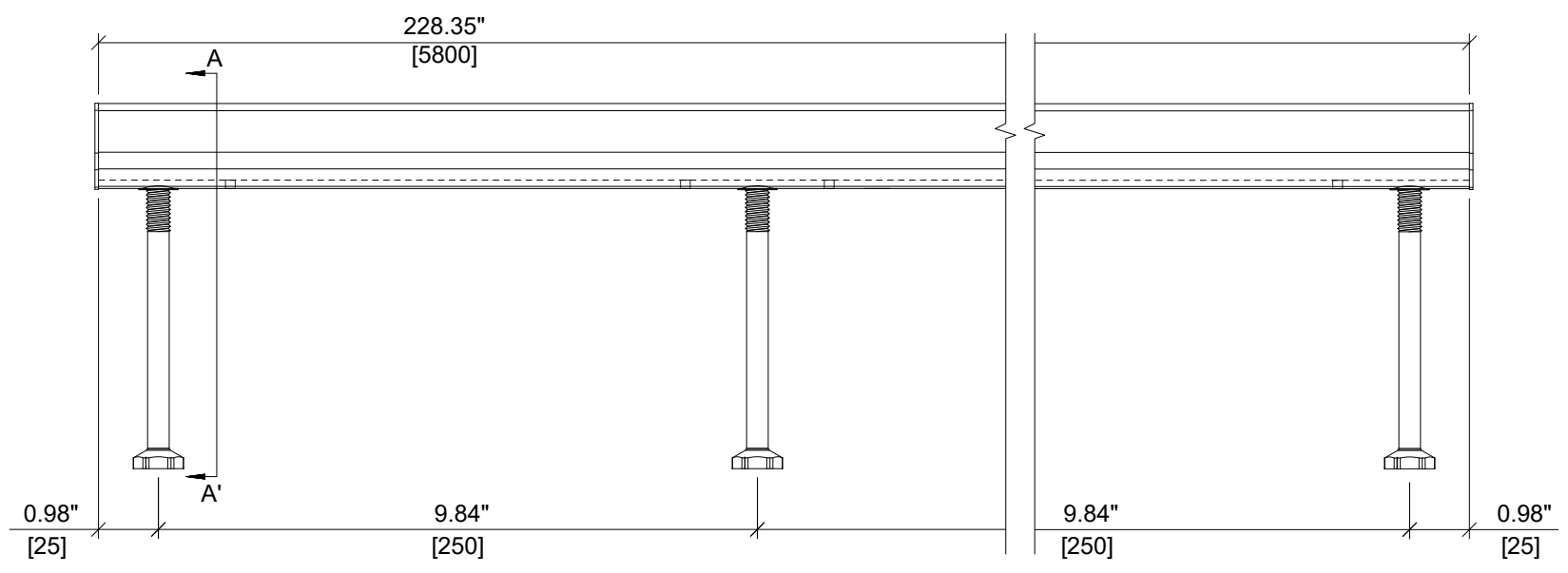
ITEM	DESCRIPTION	QUANTITY
1	CHANNEL PROFILE	1
2	RIVET CONNECTION	3
3	ROUNDED HEADED ANCHOR	3
4	END CAP	2
5	TEAR OUT BAND	1
6	FILLER FOAM	1



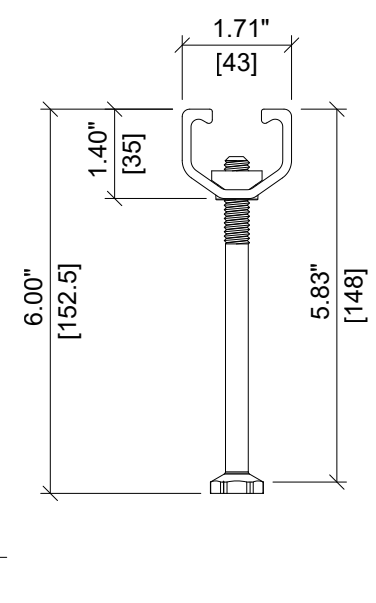
ITEM NUMBER: <b>431853</b>	CHANNEL LIP: <b>SMOOTH</b>
ITEM DESCRIPTION: <b>HAC-60 148/550 F</b>	



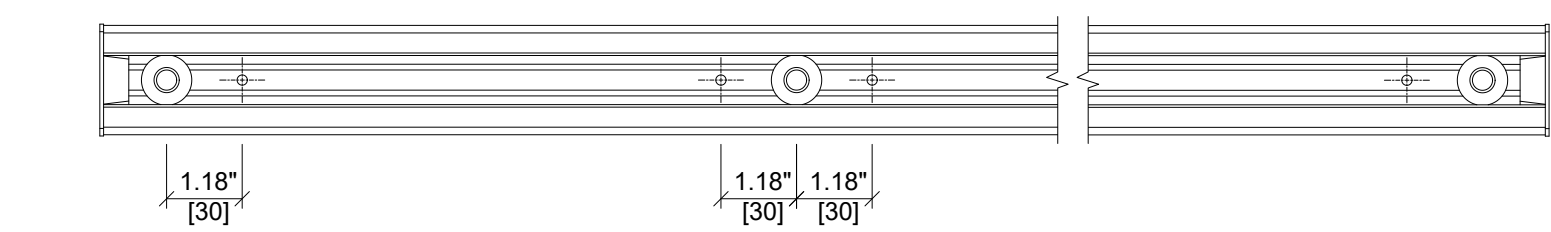
ITEM	DESCRIPTION	QUANTITY
1	CHANNEL PROFILE	1
2	RIVET CONNECTION	24
3	ROUNDED HEADED ANCHOR	24
4	END CAP	2
5	TEAR OUT BAND	1
6	FILLER FOAM	1



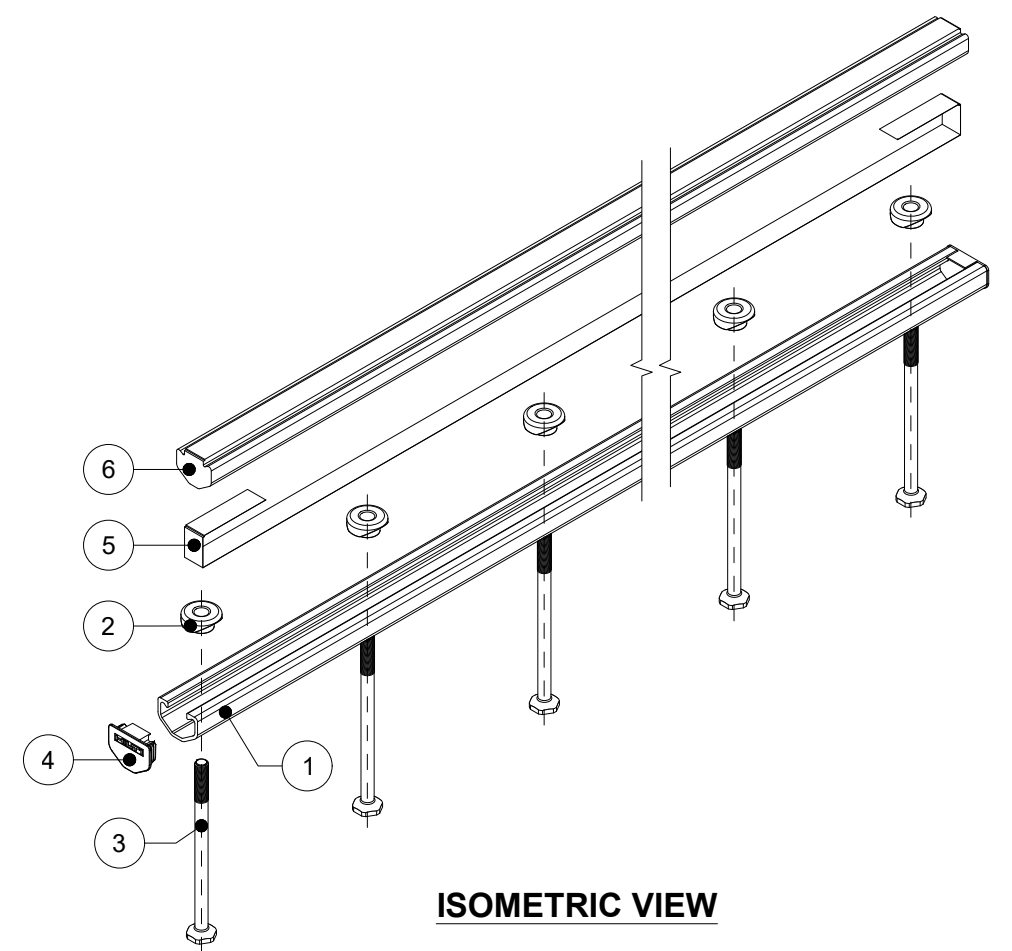
**ELEVATION VIEW**



**SECTION A-A'**



**PLAN VIEW**



**ISOMETRIC VIEW**

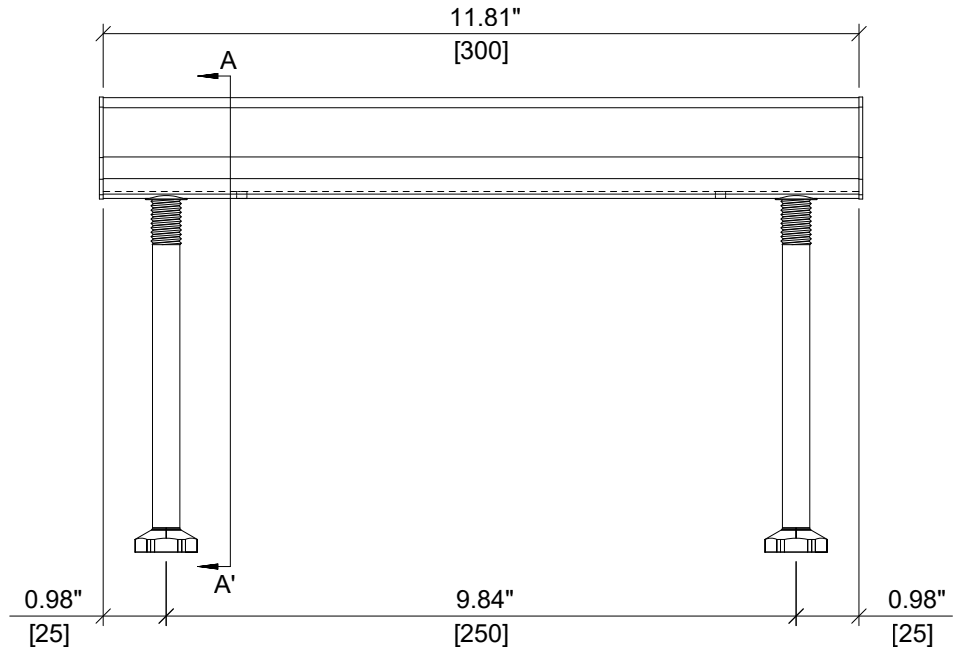


ITEM NUMBER: <b>431856</b>	CHANNEL LIP: <b>SMOOTH</b>
ITEM DESCRIPTION: <b>HAC-60 148/5800 F</b>	

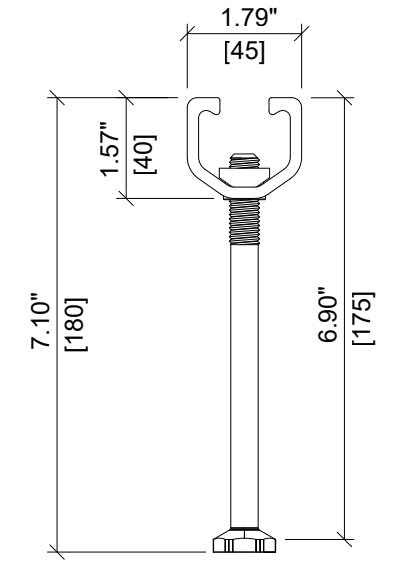




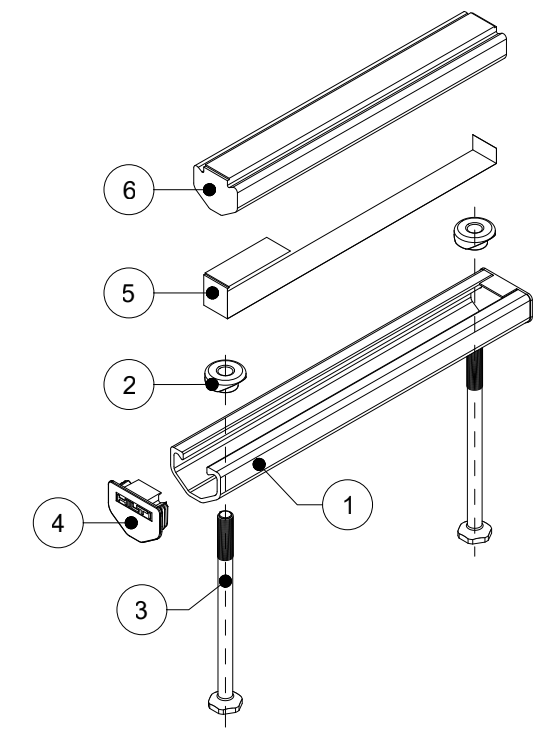
ITEM	DESCRIPTION	QUANTITY
1	CHANNEL PROFILE	1
2	RIVET CONNECTION	2
3	ROUNDED HEADED ANCHOR	2
4	END CAP	2
5	TEAR OUT BAND	1
6	FILLER FOAM	1



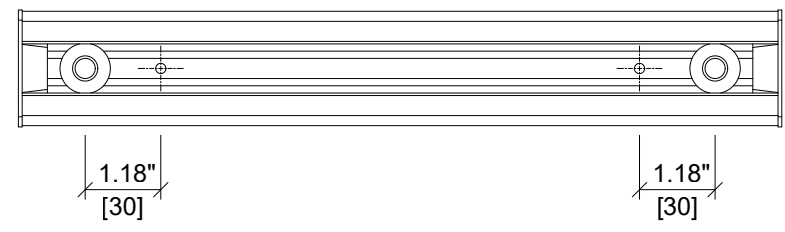
**ELEVATION VIEW**



**SECTION A-A'**



**ISOMETRIC VIEW**



**PLAN VIEW**

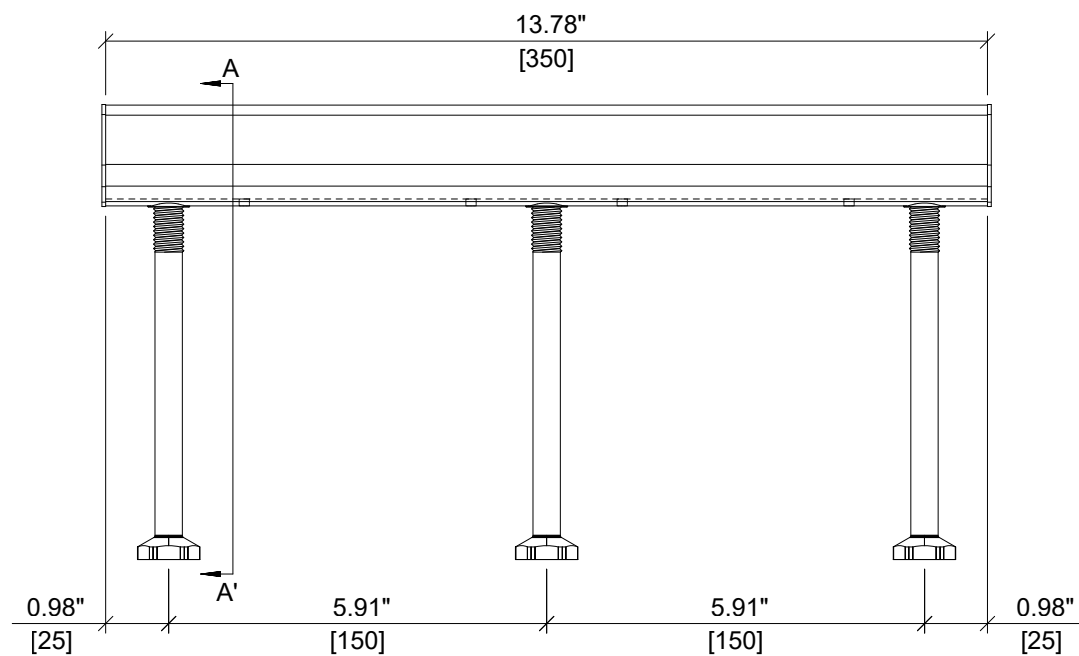


ITEM NUMBER: <b>431860</b>	CHANNEL LIP: <b>SMOOTH</b>
-------------------------------	-------------------------------

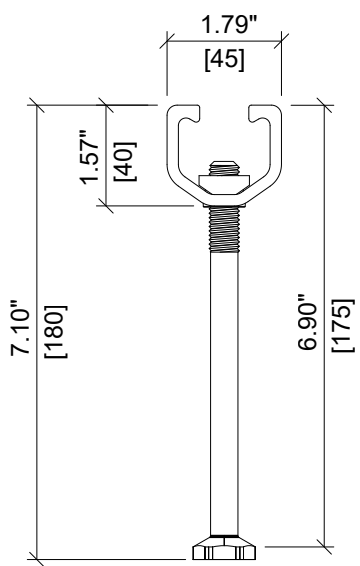
ITEM DESCRIPTION:  
**HAC-70 175/300 F**



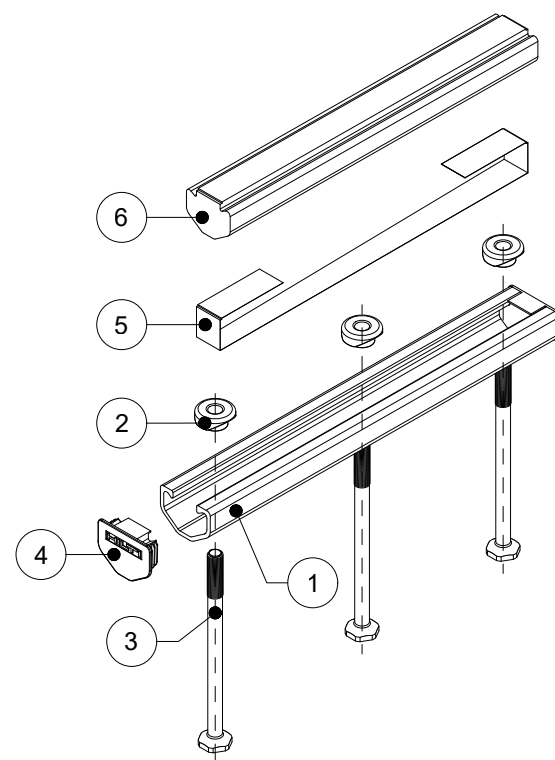
ITEM	DESCRIPTION	QUANTITY
1	CHANNEL PROFILE	1
2	RIVET CONNECTION	3
3	ROUNDED HEADED ANCHOR	3
4	END CAP	2
5	TEAR OUT BAND	1
6	FILLER FOAM	1



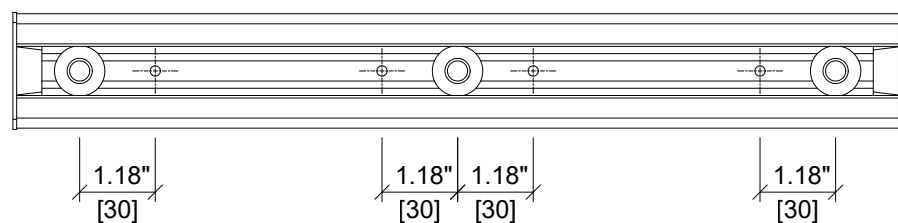
**ELEVATION VIEW**



**SECTION A-A'**



**ISOMETRIC VIEW**



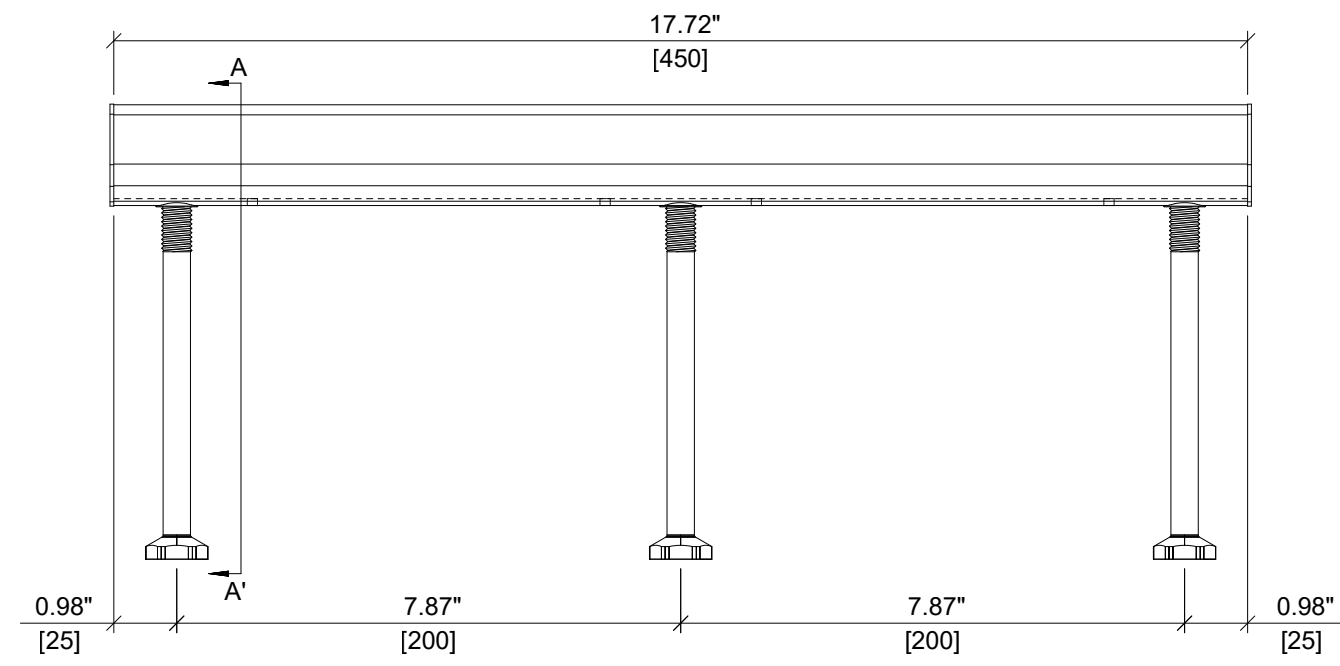
**PLAN VIEW**

**HILTI**

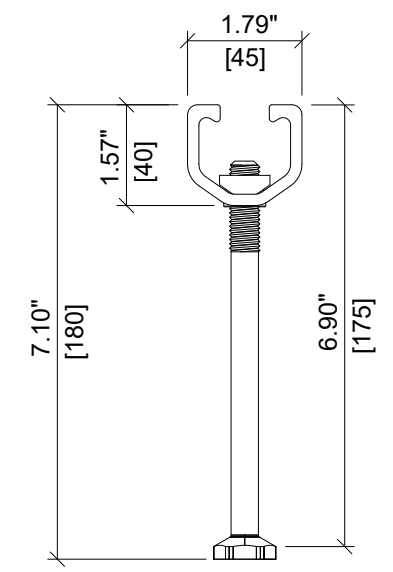
ITEM NUMBER: <div style="font-size: 18px; font-weight: bold;">431861</div>	CHANNEL LIP: <div style="font-size: 18px; font-weight: bold;">SMOOTH</div>
ITEM DESCRIPTION: <div style="font-size: 18px; font-weight: bold;">HAC-70 175/350 F</div>	



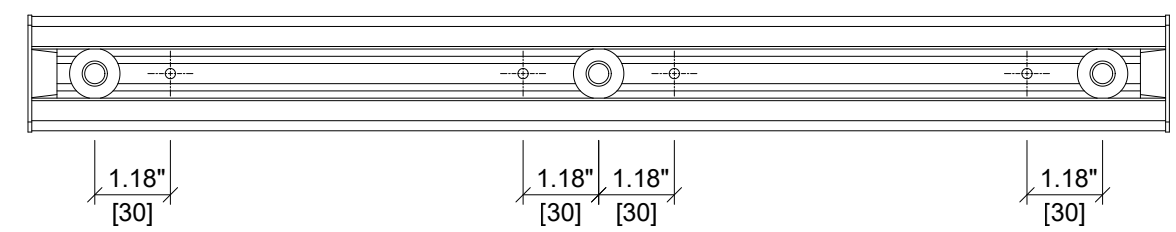
ITEM	DESCRIPTION	QUANTITY
1	CHANNEL PROFILE	1
2	RIVET CONNECTION	3
3	ROUNDED HEADED ANCHOR	3
4	END CAP	2
5	TEAR OUT BAND	1
6	FILLER FOAM	1



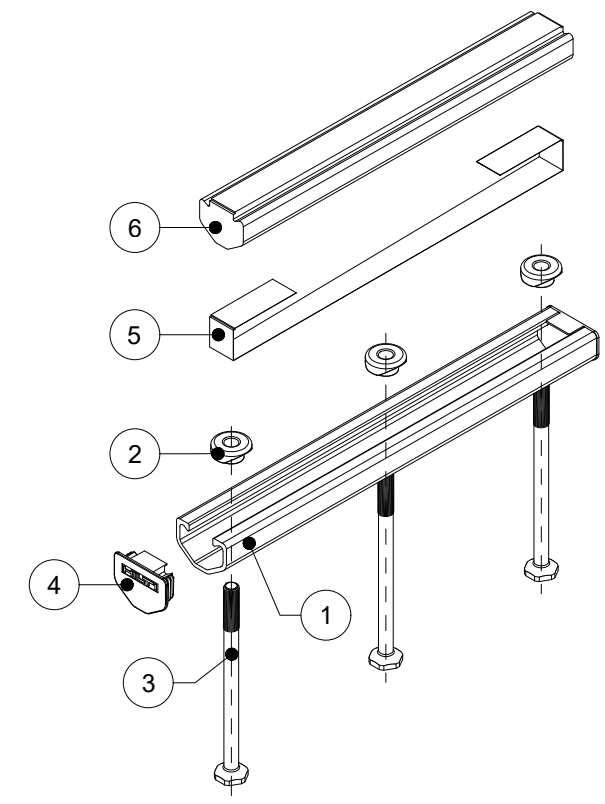
**ELEVATION VIEW**



**SECTION A-A'**



**PLAN VIEW**



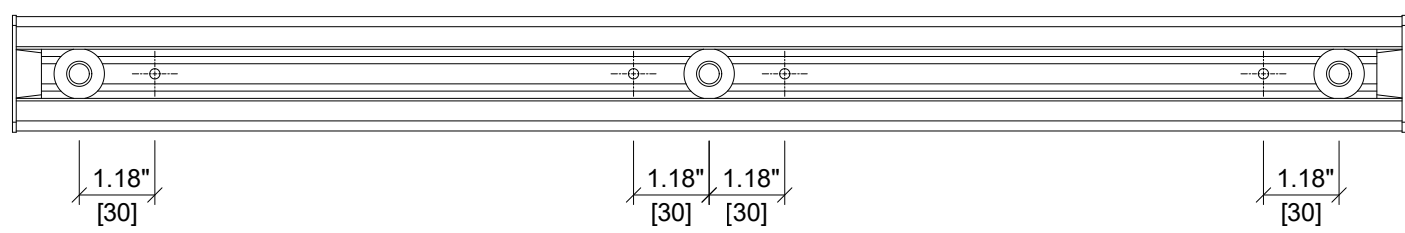
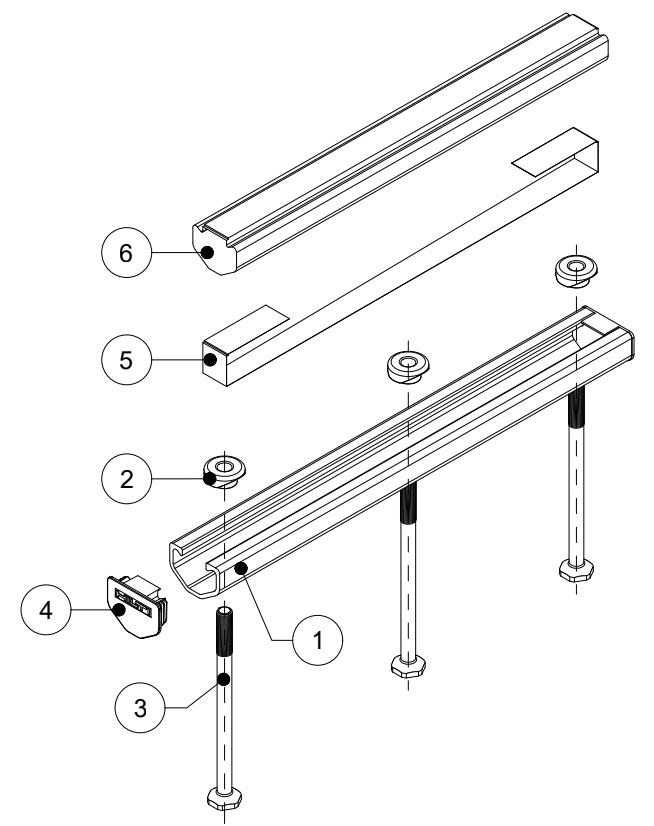
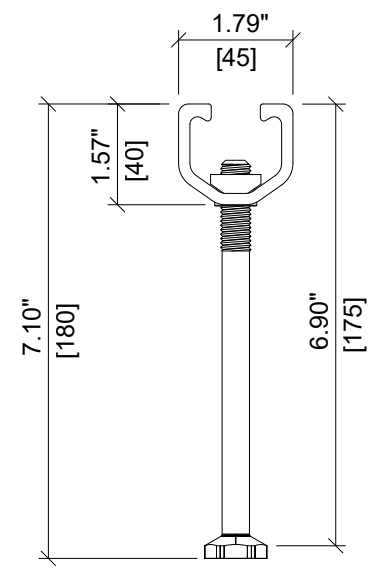
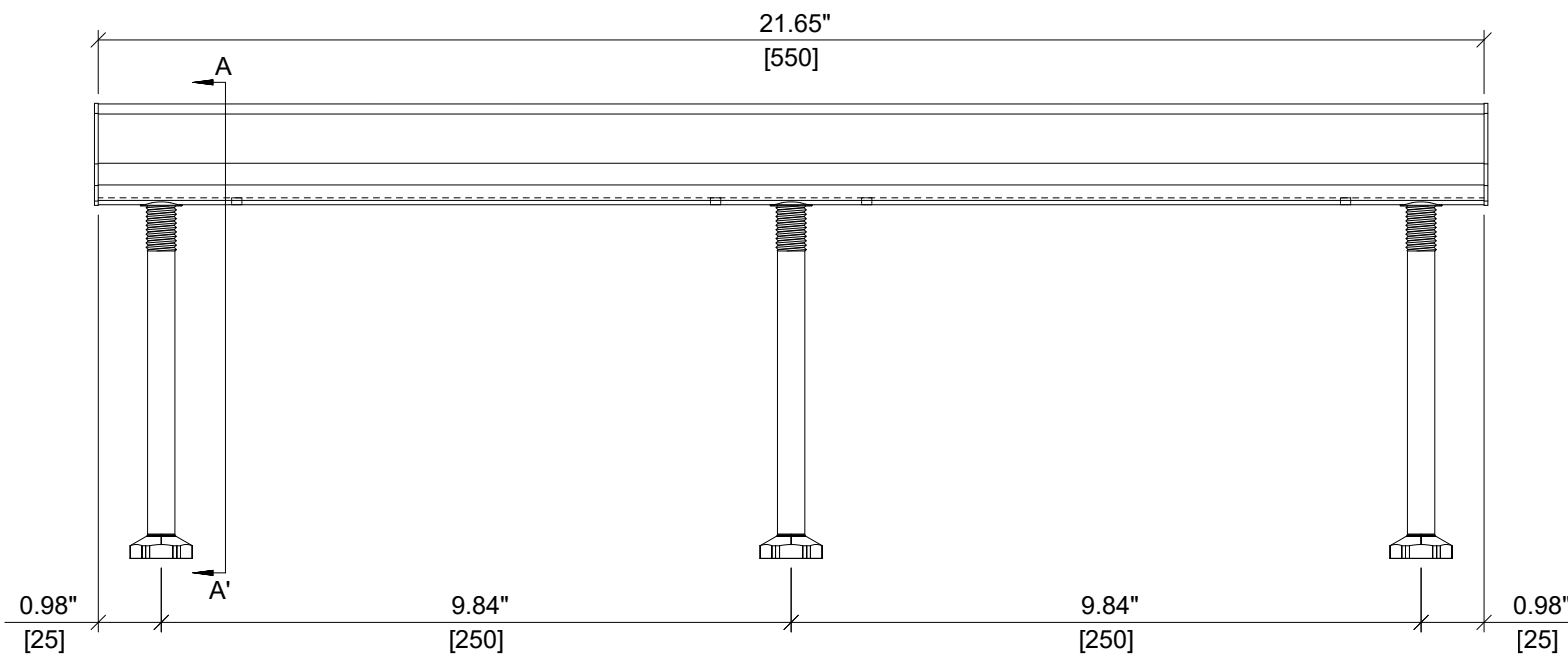
**ISOMETRIC VIEW**



ITEM NUMBER: <b>431862</b>	CHANNEL LIP: <b>SMOOTH</b>
ITEM DESCRIPTION: <b>HAC-70 175/450 F</b>	



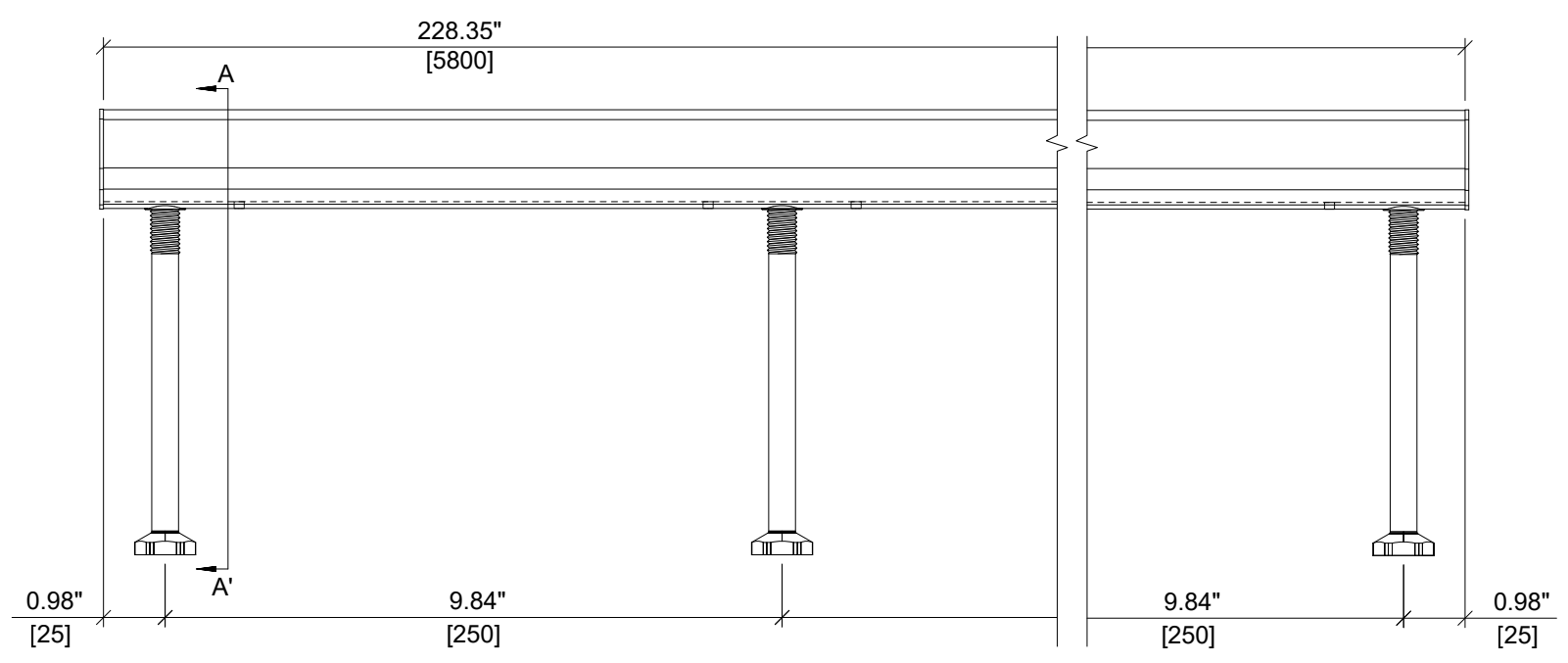
ITEM	DESCRIPTION	QUANTITY
1	CHANNEL PROFILE	1
2	RIVET CONNECTION	3
3	ROUNDED HEADED ANCHOR	3
4	END CAP	2
5	TEAR OUT BAND	1
6	FILLER FOAM	1



ITEM NUMBER: <b>431863</b>	CHANNEL LIP: <b>SMOOTH</b>
ITEM DESCRIPTION: <b>HAC-70 175/550 F</b>	

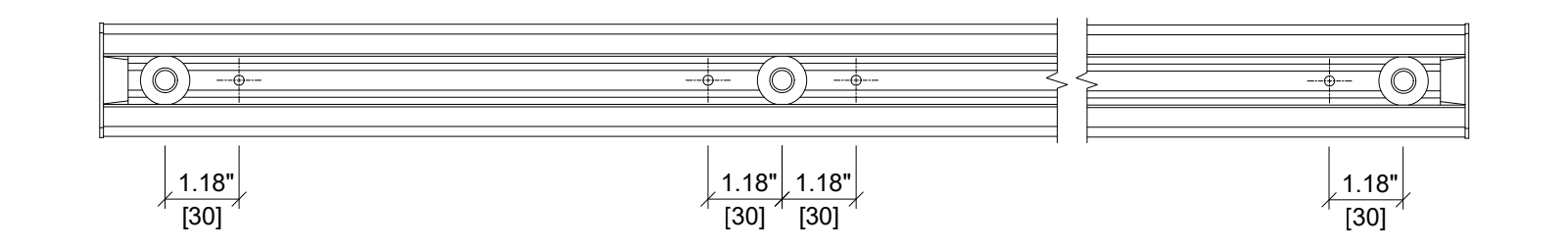


ITEM	DESCRIPTION	QUANTITY
1	CHANNEL PROFILE	1
2	RIVET CONNECTION	24
3	ROUNDED HEADED ANCHOR	24
4	END CAP	2
5	TEAR OUT BAND	1
6	FILLER FOAM	1

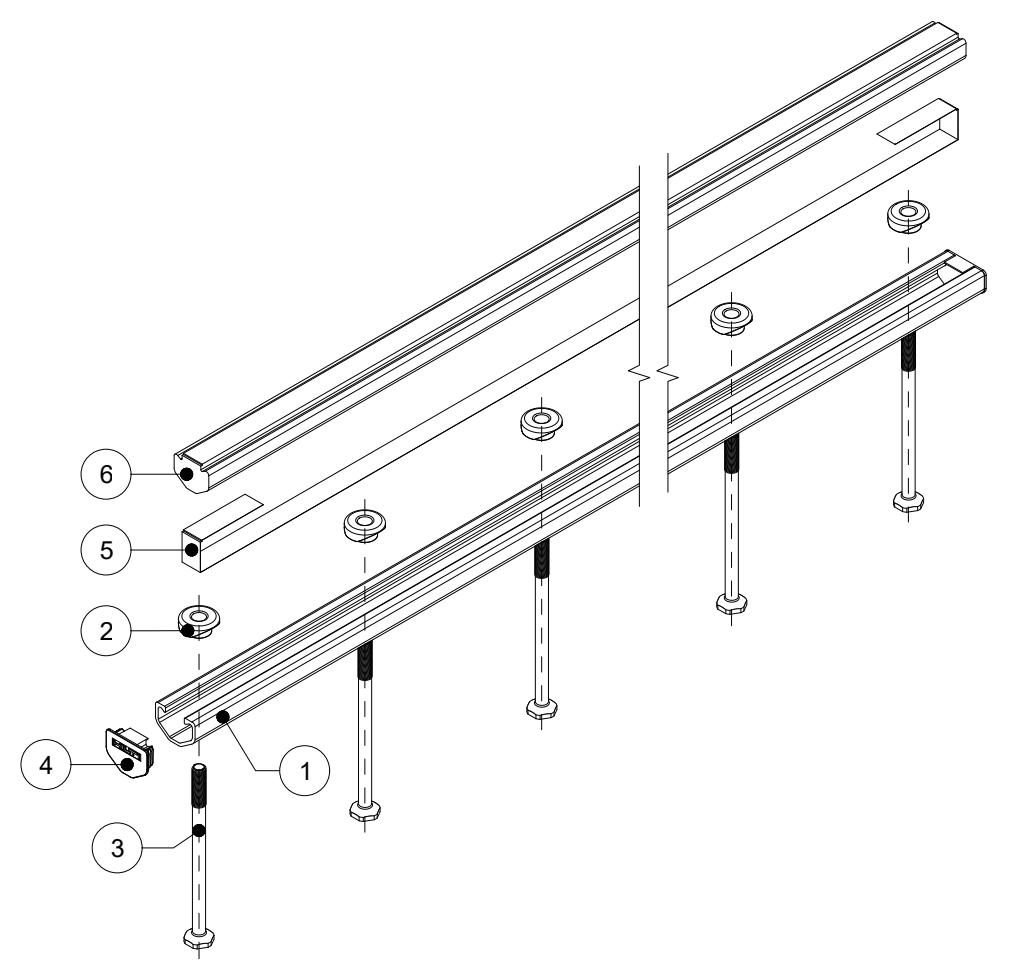


**ELEVATION VIEW**

**SECTION A-A'**



**PLAN VIEW**



**ISOMETRIC VIEW**



ITEM NUMBER: <b>431866</b>	CHANNEL LIP: <b>SMOOTH</b>
ITEM DESCRIPTION: <b>HAC-70 175/5800 F</b>	

