

UL/cUL SYSTEM NO. HW-D-0907

**TOP OF WALL JOINT : GYPSUM WALL ASSEMBLY**

ASSEMBLY RATING = 1-HR. OR 2-HR.

L-RATING AT AMBIENT = 1 CFM / LIN FT

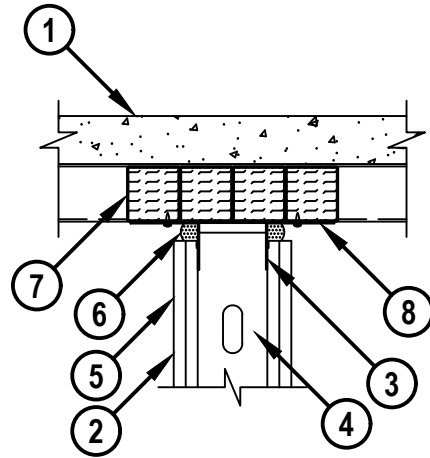
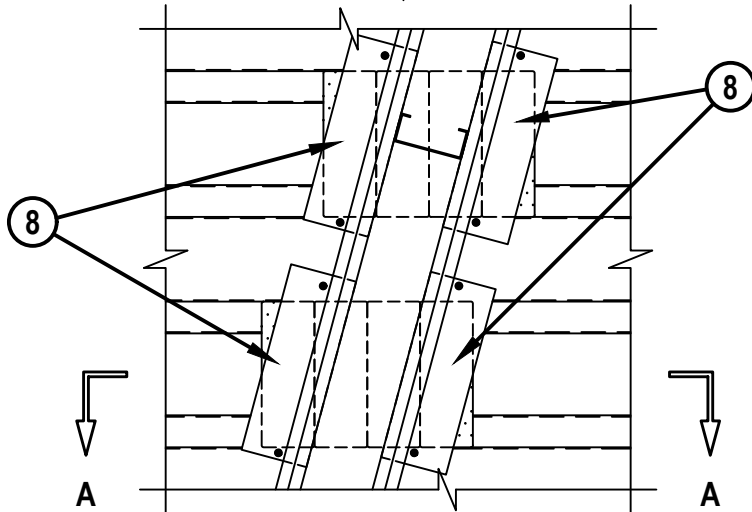
L-RATING AT 400°F = LESS THAN 1 CFM / LIN FT

CLASS II AND III MOVEMENT CAPABILITIES - 62% OR 86% COMPRESSION OR EXTENSION OR 92% COMPRESSION ONLY (SEE TABLE BELOW)

HW-D-0907.d.100424

**BOTTOM VIEW**

**SECTION A-A**

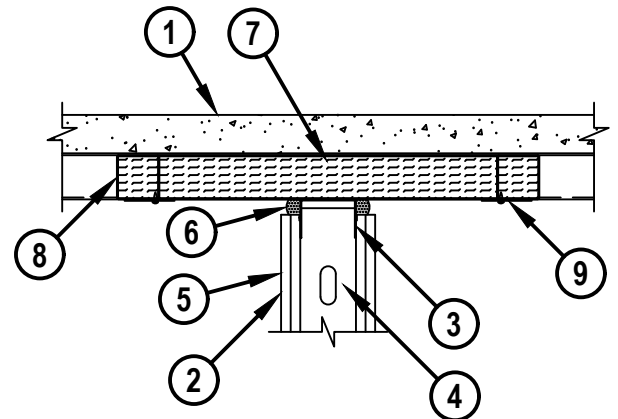
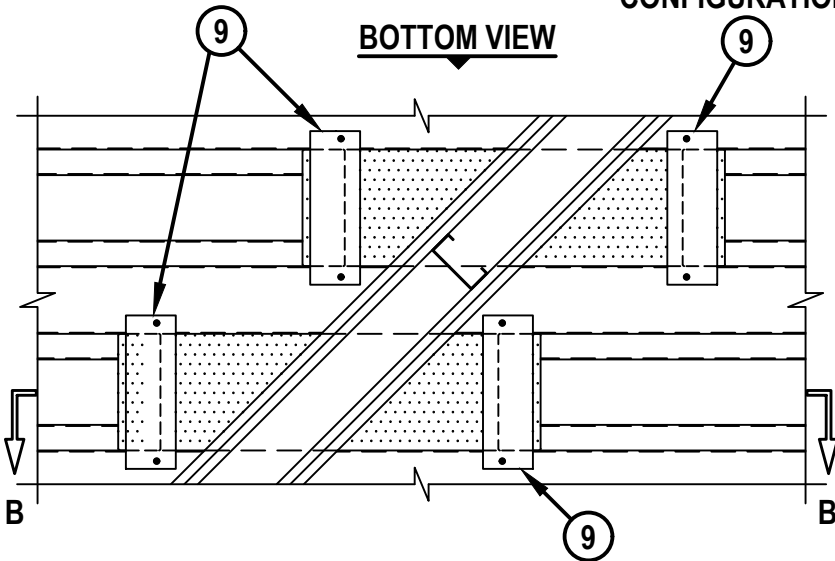


**CONFIGURATION A**

**CONFIGURATION B**

**BOTTOM VIEW**

**SECTION B-B**



HILTI, Inc.  
Plano, Texas USA (800) 879-8000

Sheet	1 of 3
Scale	-
Date	Oct. 04, 2024

Drawing No.  
**HWD  
0907d**

*Saving Lives through Innovation and Education*

**TOP OF WALL JOINT : GYPSUM WALL ASSEMBLY**

ASSEMBLY RATING = 1-HR. OR 2-HR.

L-RATING AT AMBIENT = 1 CFM / LIN FT

L-RATING AT 400°F = LESS THAN 1 CFM / LIN FT

CLASS II AND III MOVEMENT CAPABILITIES - 62% OR 86% COMPRESSION OR EXTENSION OR 92% COMPRESSION ONLY (SEE TABLE BELOW)

HWD0907d.100424

1. LIGHTWEIGHT OR NORMAL WEIGHT CONCRETE FLOOR (MIN. 2-1/2" THICK) OVER METAL DECKING ASSEMBLY (UL/cUL CLASSIFIED). THE HOURLY FIRE RATING OF THE FLOOR ASSEMBLY SHALL BE EQUAL TO OR GREATER THAN THE HOURLY RATING OF THE WALL ASSEMBLY.
2. GYPSUM WALL ASSEMBLY (UL/cUL CLASSIFIED U400, V400, OR W400 SERIES) (1-HR. OR 2-HR. FIRE-RATING) (2-HR. SHOWN). THE HOURLY RATING OF THE JOINT SYSTEM IS DEPENDENT UPON THE HOURLY RATING OF THE WALL ASSEMBLY.
3. CEILING RUNNER (MIN. 25 GA, FLANGE HEIGHT OF CEILING RUNNER SHALL BE MINIMUM 1/4" GREATER THAN MAXIMUM EXTENDED JOINT WIDTH) INSTALLED AT AN ANGLE TO THE FLUTED STEEL DECK AND FASTENED TO UNDERSIDE OF CONCRETE FLOOR WITH MASONRY ANCHORS OR STEEL FASTENERS (SPACED MAX. 24" OC) (SEE NOTE BELOW).
4. STEEL STUDS (MIN. 3-5/8" WIDE) CUT 3/4" TO 1" LESS IN LENGTH THAN ASSEMBLY HEIGHT WITH BOTTOM NESTING IN CEILING RUNNER WITHOUT ATTACHMENT.
5. 5/8" OR 1-1/4" THICKNESS GYPSUM WALLBOARD AS SPECIFIED IN THE INDIVIDUAL UL DESIGN. TOP ROW OF SCREWS SHALL BE INSTALLED INTO STUD 3-1/2" TO 5-1/2" BELOW THE BOTTOM EDGE OF THE CEILING RUNNER.
6. HILTI CFS-TTS MD OS OR CFS-TTS 600 FIRESTOP TOP TRACK SEAL INSTALLED OVER CEILING RUNNER PRIOR TO ATTACHMENT TO UNDERSIDE OF STEEL FLOOR UNIT IN ACCORDANCE WITH THE ACCOMPANYING INSTALLATION INSTRUCTIONS.

**CONFIGURATION A**

7. HILTI CFS-TTS MD P [1.5, 2, OR 3] FIRESTOP TOP TRACK PLUG (PLUG SIZE TO MATCH DECK HEIGHT) TO BE FRICTION FIT IN AND COMPLETELY FILL FLUTES ABOVE THE CEILING RUNNER EXTENDING AT LEAST FLUSH WITH THE OUTER SURFACE OF THE CFS-TTS MD TOP TRACK SEAL ON BOTH SIDES OF WALL. FLUTE PLUGS TO EXTEND A MINIMUM 2-1/2" BEYOND THE CEILING RUNNER.
8. MIN 2" WIDE x 10" LONG (MIN 20 GA) STEEL STRAPS BUTTED AGAINST CEILING RUNNER ON BOTH SIDES OF WALL TO SPAN THE FLUTE AND SECURED TO FLUTED DECK WITH ONE STEEL FASTENER AT EACH END.

**CONFIGURATION B**

7. HILTI CFS-TTS MD C [1.5, 2, OR 3] FIRESTOP TOP TRACK COVER FRICTION FIT TO COMPLETELY FILL FLUTES IN ACCORDANCE WITH ACCOMPANYING INSTALLATION INSTRUCTIONS. TOP TRACK COVER SIZE TO MATCH DECK HEIGHT). TOP TRACK COVER TO EXTEND SUCH THAT THE STEEL STRAPS (ITEM 9) OVERLAP MINIMUM 1".
8. HILTI CFS-TTS MD P [1.5, 2, OR 3] FIRESTOP TOP TRACK PLUG (PLUG SIZE TO MATCH DECK HEIGHT) TO BE FRICTION FIT ABOVE THE STEEL STRAPS AND AT THE END OF TOP TRACK COVER ON BOTH SIDES OF WALL. FLUTE PLUGS TO EXTEND A MAXIMUM 1/2" BEYOND STEEL STRAPS (ITEM 9).
9. MIN 4" WIDE X 10" LONG (MIN 20 GA) STEEL STRAPS LOCATED A MAX 24" FROM CENTER OF CEILING RUNNER ON BOTH SIDES OF WALL AND SECURED TO STEEL DECK WITH MASONRY ANCHORS OF STEEL FASTENERS.



**Hilti Firestop Systems**

HILTI, Inc.  
Plano, Texas USA (800) 879-8000

Sheet	2 of 3
Scale	-
Date	Oct. 04, 2024

Drawing No.

**HWD  
0907d**

UL/cUL SYSTEM NO. HW-D-0907

**TOP OF WALL JOINT : GYPSUM WALL ASSEMBLY**

ASSEMBLY RATING = 1-HR. OR 2-HR.

L-RATING AT AMBIENT = 1 CFM / LIN FT

L-RATING AT 400°F = LESS THAN 1 CFM / LIN FT

CLASS II AND III MOVEMENT CAPABILITIES - 62% OR 86% COMPRESSION OR EXTENSION OR  
92% COMPRESSION ONLY (SEE TABLE BELOW)

HW-D-0907.d.100424

MAX NOM JOINT WIDTH	MAX MOVEMENT CAPABILITIES		MAX MOVEMENT
7/8"	COMPRESSION	86%	3/4"
	EXTENSION	86%	3/4"
1"	COMPRESSION	62%	5/8"
	EXTENSION	62%	5/8"
1-5/8"	COMPRESSION	92%	1-1/2"
	EXTENSION	0%	0"

AS AN ALTERNATIVE TO THE MOVEMENT PERCENTAGES ABOVE, THE JOINT SYSTEM MAY MOVE FREELY WITHOUT RESTRICTION TO THE PERCENTAGE OF MOVEMENT WITHIN THE RANGE OF A MIN 1/8" TO MAX 1-5/8" JOINT WIDTH.

NOTE : AS AN ALTERNATE TO CEILING RUNNER IN ITEM 3, SLOTTED CEILING RUNNERS MAY BE USED. CONSULT THE UL FIRE RESISTANCE DIRECTORY FOR APPROVED MANUFACTURERS.



Hilti Firestop Systems

HILTI, Inc.  
Plano, Texas USA (800) 879-8000

Sheet 3 of 3

Scale -

Date Oct. 04, 2024

Drawing No.

**HWD  
0907d**

*Saving Lives through Innovation and Education*