

UL/cUL SYSTEM NO. HW-D-0884

# TOP OF WALL JOINT : GYPSUM WALL ASSEMBLY

ASSEMBLY RATING = 1-HR. OR 2-HR.

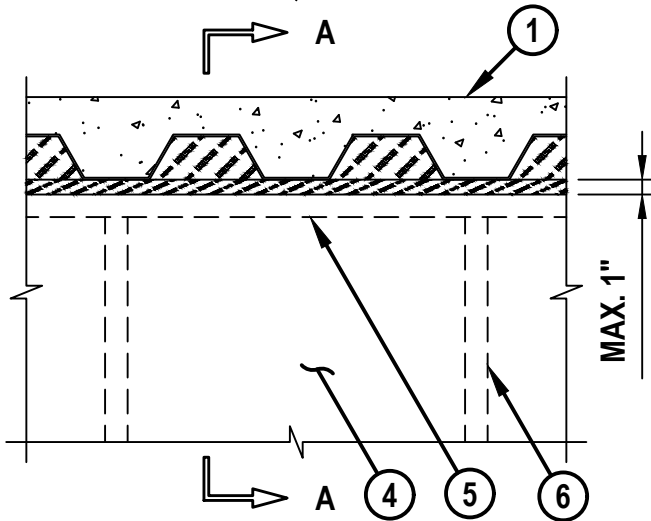
L-RATING AT AMBIENT = 1 CFM / LIN FT

L-RATING AT 400°F = LESS THAN 1 CFM / LIN FT

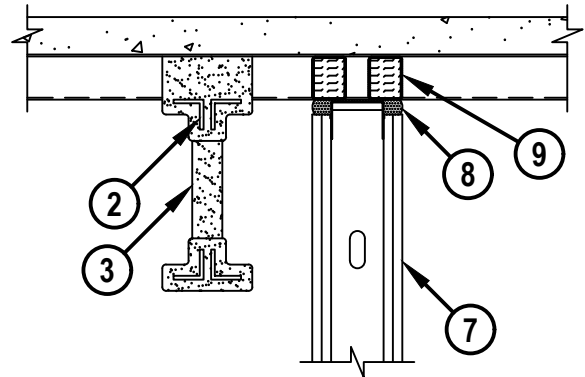
CLASS II AND III MOVEMENT CAPABILITIES - 62% OR 86% COMPRESSION OR EXTENSION OR 92% COMPRESSION ONLY (SEE TABLE BELOW)

HW-D-0884c-100724

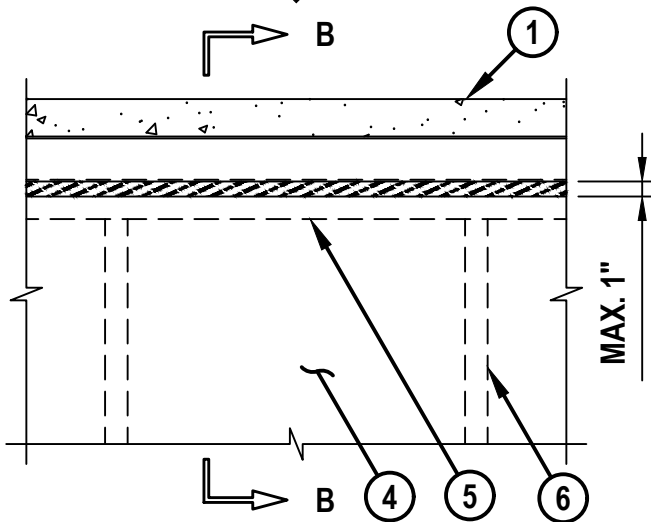
**FRONT VIEW**



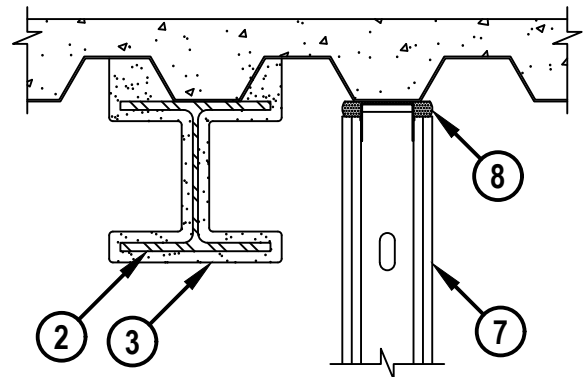
**SECTION A-A**



**FRONT VIEW**



**SECTION B-B**



HILTI, Inc.  
Plano, Texas USA (800) 879-8000

Sheet	1 of 3
Scale	5/64" = 1"
Date	Oct. 07, 2024

Drawing No.  
**HWD  
0884c**

*Saving Lives through Innovation and Education*

UL/cUL SYSTEM NO. HW-D-0884

**TOP OF WALL JOINT : GYPSUM WALL ASSEMBLY**

ASSEMBLY RATING = 1-HR. OR 2-HR.

L-RATING AT AMBIENT = 1 CFM / LIN FT

L-RATING AT 400°F = LESS THAN 1 CFM / LIN FT

CLASS II AND III MOVEMENT CAPABILITIES - 62% OR 86% COMPRESSION OR EXTENSION OR 92% COMPRESSION ONLY (SEE TABLE BELOW)

HW-D-0884c-100724

1. LIGHTWEIGHT OR NORMAL WEIGHT CONCRETE FLOOR (MINIMUM 2-1/2" THICK) OVER METAL DECKING (UL/cUL CLASSIFIED) (1-HR. OR 2-HR. FIRE-RATING).
2. STRUCTURAL STEEL BEAM OR OPEN-WEB STEEL JOIST AS SPECIFIED IN THE INDIVIDUAL D900 FLOOR/CEILING DESIGN. STEEL SUPPORT ORIENTED PARALLEL AND MAXIMUM 4" FROM WALL.
3. UL/cUL CLASSIFIED MONOKOTE (TYPE MK-6/HY, MK-6/HY ES, MK-6S, OR RG) OR TYPE 300 FIREPROOFING SPRAYED TO THE THICKNESS SPECIFIED IN THE INDIVIDUAL D900 SERIES DESIGN (SEE NOTE NO. 1 BELOW). THE FLUTES OF THE STEEL FLOOR UNITS ABOVE THE STRUCTURAL STEEL SUPPORTS SHALL BE FILLED WITH FIREPROOFING.
4. GYPSUM WALL ASSEMBLY (UL/cUL CLASSIFIED U400, V400, OR W400 SERIES) (1-HR. OR 2-HR. FIRE-RATING) (2-HR. SHOWN).
5. CEILING RUNNER (MIN. 25 GA., WITH FLANGE HEIGHT OF 2-1/2") FASTENED TO UNDERSIDE OF CONCRETE FLOOR WITH MASONRY ANCHORS OR STEEL FASTENERS (SPACED MAX 24" OC) (SEE NOTE NO. 2 BELOW). CEILING RUNNER MAY BE INSTALLED PARALLEL AND CENTERED OR PERPENDICULAR TO FLUTES.
6. STEEL STUDS (MIN. 3-1/2" WIDE) CUT 3/4" TO 1" LESS IN LENGTH THAN ASSEMBLY HEIGHT WITH BOTTOM NESTING IN CEILING RUNNER WITHOUT ATTACHMENT.
7. 5/8" OR 1-1/4" THICKNESS GYPSUM WALLBOARD AS SPECIFIED IN THE INDIVIDUAL UL DESIGN. TOP ROW OF SCREWS SHALL BE INSTALLED INTO STUD 3-1/2" TO 12" BELOW THE BOTTOM EDGE OF THE CEILING RUNNER (SEE NOTE NO. 3 BELOW).
8. HILTI CFS-TTS MD OS OR CFS-TTS MD 600 TOP TRACK SEAL INSTALLED OVER CEILING RUNNER PRIOR TO ATTACHMENT TO UNDERSIDE OF STEEL FLOOR UNIT IN ACCORDANCE WITH THE ACCOMPANYING INSTALLATION INSTRUCTIONS.
9. WHEN CEILING RUNNER IS PERPENDICULAR TO FLUTES, HILTI CFS-TTS MD P [1.5, 2, OR 3] FIRESTOP TOP TRACK PLUG (PLUG SIZE TO MATCH DECK HEIGHT) TO BE FRICTION FIT IN FLUTES ABOVE THE CEILING RUNNER, FLUSH BOTH SIDES OF WALL (SEE NOTE NO. 4 BELOW).



Hilti Firestop Systems

HILTI, Inc.  
Plano, Texas USA (800) 879-8000

Sheet	2 of 3
Scale	-
Date	Oct. 07, 2024

Drawing No.

**HWD  
0884c**

*Saving Lives through Innovation and Education*

UL/cUL SYSTEM NO. HW-D-0884

**TOP OF WALL JOINT : GYPSUM WALL ASSEMBLY**

ASSEMBLY RATING = 1-HR. OR 2-HR.

L-RATING AT AMBIENT = 1 CFM / LIN FT

L-RATING AT 400°F = LESS THAN 1 CFM / LIN FT

CLASS II AND III MOVEMENT CAPABILITIES - 62% OR 86% COMPRESSION OR EXTENSION OR  
92% COMPRESSION ONLY (SEE TABLE BELOW)

HW-D-0884c-100724

MAX NOM JOINT WIDTH	MAX MOVEMENT CAPABILITIES		MAX MOVEMENT
7/8"	COMPRESSION	86%	3/4"
	EXTENSION	86%	3/4"
1"	COMPRESSION	62%	5/8"
	EXTENSION	62%	5/8"
1-5/8"	COMPRESSION	92%	1-1/2"
	EXTENSION	0%	0"

AS AN ALTERNATIVE TO THE MOVEMENT PERCENTAGES ABOVE, THE JOINT SYSTEM MAY MOVE FREELY WITHOUT RESTRICTION TO THE PERCENTAGE OF MOVEMENT WITHIN THE RANGE OF A MIN 1/8" TO MAX 1-5/8" JOINT WIDTH.

- NOTES :
1. WHEN STRUCTURAL STEEL SUPPORT CONSISTS OF OPEN-WEB STEEL JOISTS, 3/8" DIAMOND MESH EXPANDED STEEL LATH (1.7 TO 3.4 LB/SQ YD) SHALL BE INSTALLED TO COMPLETELY COVER ONE SIDE OF EACH JOIST. LATH SHALL BE SECURED WITH STEEL TIE WIRE AND COMPLETELY FILLED WITH FIREPROOFING.
  2. AS AN ALTERNATE TO CEILING RUNNER IN ITEM 5, SLOTTED CEILING RUNNERS MAY BE USED. CONSULT THE UL FIRE RESISTANCE DIRECTORY FOR APPROVED MANUFACTURERS.
  3. WHERE TOP OF WALL ASSEMBLY IS INACCESSIBLE ABOVE THE STRUCTURAL STEEL SUPPORT, THE GYPSUM BOARD ATTACHMENT SCREWS MAY BE OMITTED.
  4. [OPTIONAL] AS AN ALTERNATE TO CFS-TTS MD P FIRESTOP TOP TRACK PLUG, HILTI CP 777 SPEED PLUG FRICTION FITTED TO COMPLETELY FILL FLUTE FLUSH WITH BOTH SIDE OF WALL.



HILTI, Inc.  
Plano, Texas USA (800) 879-8000

Sheet	3 of 3
Scale	-
Date	Oct. 07, 2024

Drawing No.  
**HWD  
0884c**

*Saving Lives through Innovation and Education*