

UL/cUL SYSTEM NO. HW-D-0873

**TOP OF WALL JOINT : GYPSUM WALL ASSEMBLY**

ASSEMBLY RATING = 1-HR. OR 2-HR.

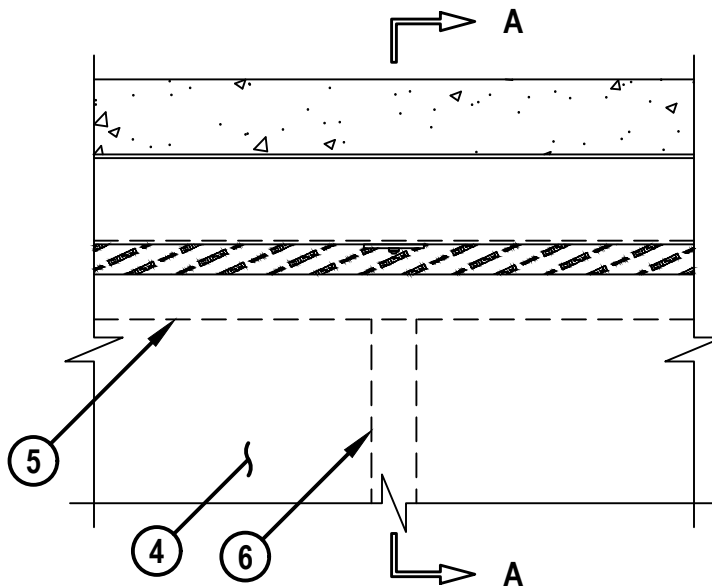
L-RATING AT AMBIENT = 1 CFM / LIN FT

L-RATING AT 400°F = LESS THAN 1 CFM / LIN FT

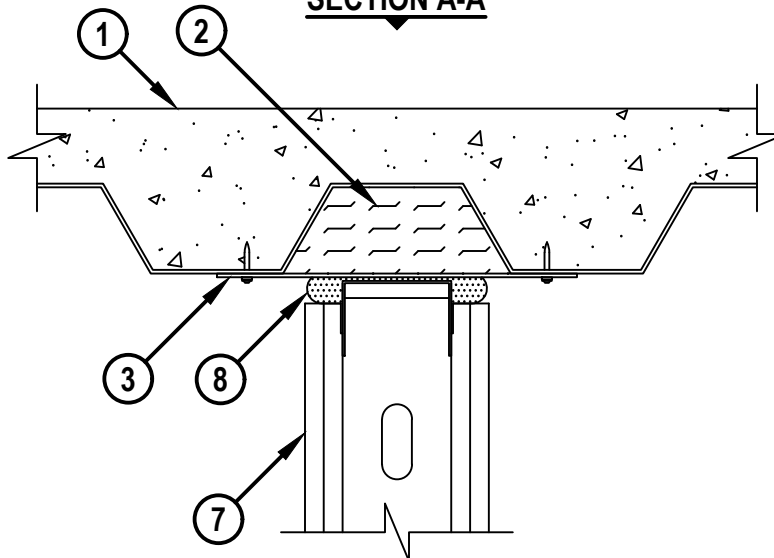
CLASS II AND III MOVEMENT CAPABILITIES - 62% OR 86% COMPRESSION OR EXTENSION OR  
92% COMPRESSION ONLY (SEE TABLE BELOW)

HWD0873f.100424

**FRONT VIEW**



**SECTION A-A**



1. LIGHTWEIGHT OR NORMAL WEIGHT CONCRETE FLOOR (MINIMUM 2-1/2" THICK) OVER METAL DECKING ASSEMBLY (UL/cUL CLASSIFIED). THE HOURLY FIRE RATING OF THE FLOOR ASSEMBLY SHALL BE EQUAL TO OR GREATER THAN THE HOURLY RATING OF THE WALL ASSEMBLY.



HILTI, Inc.  
Plano, Texas USA (800) 879-8000

Sheet	1 of 2
Scale	5/32" = 1"
Date	Oct. 04, 2024

Drawing No.  
**HWD  
0873f**

*Saving Lives through Innovation and Education*

**TOP OF WALL JOINT : GYPSUM WALL ASSEMBLY**

ASSEMBLY RATING = 1-HR. OR 2-HR.

L-RATING AT AMBIENT = 1 CFM / LIN FT

L-RATING AT 400°F = LESS THAN 1 CFM / LIN FT

CLASS II AND III MOVEMENT CAPABILITIES - 62% OR 86% COMPRESSION OR EXTENSION OR 92% COMPRESSION ONLY (SEE TABLE BELOW)

HWD0873f.100424

2. HILTI CFS-TTS MD C [1.5, 2, OR 3] FIRESTOP TOP TRACK COVER FRICTION FIT TO COMPLETELY FILL FLUTES IN ACCORDANCE WITH ACCOMPANYING INSTALLATION INSTRUCTIONS. TOP TRACK COVER SIZE TO MATCH DECK HEIGHT.
3. MINIMUM 2" WIDE x 10" LONG, 20 GA. STEEL STRAPS TO SPAN THE FLUTE AND OVERLAP THE VALLEYS. STEEL STRAPS SPACED MAX 24" OC AND FASTENED TO DECK WITH MASONRY ANCHORS OR STEEL FASTENERS ON EACH SIDE OF FLUTE.
4. GYPSUM WALL ASSEMBLY (UL/cUL CLASSIFIED U400, V400 OR W400 SERIES) (1-HR. OR 2-HR. FIRE-RATING) (2-HR. SHOWN). THE HOURLY RATING OF THE JOINT SYSTEM IS DEPENDENT UPON THE HOURLY RATING OF THE WALL ASSEMBLY.
5. CEILING RUNNER (MIN. 25 GA., FLANGE HEIGHT OF CEILING RUNNER SHALL BE MINIMUM 1/4" GREATER THAN MAXIMUM EXTENDED JOINT WIDTH) FASTENED TO STEEL STRAPS WITH TWO MIN NO. 10 x 3/4" STEEL SCREWS (SPACED MAXIMUM 24" OC) (SEE NOTE BELOW).
6. STEEL STUDS (MIN. 3-1/2" WIDE) CUT 3/4" TO 1" LESS IN LENGTH THAN ASSEMBLY HEIGHT WITH BOTTOM NESTING IN CEILING RUNNER WITHOUT ATTACHMENT.
7. 5/8" OR 1-1/4" THICKNESS GYPSUM WALLBOARD AS SPECIFIED IN THE INDIVIDUAL UL DESIGN. TOP ROW OF SCREWS SHALL BE INSTALLED INTO STUD 3-1/2" TO 5-1/2" BELOW THE BOTTOM EDGE OF THE CEILING RUNNER.
8. HILTI CFS-TTS MD OS OR CFS-TTS MD 600 TOP TRACK SEAL INSTALLED OVER CEILING RUNNER PRIOR TO ATTACHMENT TO UNDERSIDE OF STEEL STRAPS IN ACCORDANCE WITH THE ACCOMPANYING INSTALLATION INSTRUCTIONS.

MAX NOM JOINT WIDTH	MAX MOVEMENT CAPABILITIES		MAX MOVEMENT
	COMPRESSION	EXTENSION	
7/8"	86%	3/4"	
	86%	3/4"	
1"	62%	5/8"	
	62%	5/8"	
1-5/8"	92%	1-1/2"	
	0%	0"	

AS AN ALTERNATIVE TO THE MOVEMENT PERCENTAGES ABOVE, THE JOINT SYSTEM MAY MOVE FREELY WITHOUT RESTRICTION TO THE PERCENTAGE OF MOVEMENT WITHIN THE RANGE OF A MIN 1/8" TO MAX 1-5/8" JOINT WIDTH.

**NOTE : AS AN ALTERNATE TO CEILING RUNNER IN ITEM 5, SLOTTED CEILING RUNNERS MAY BE USED. CONSULT THE UL FIRE RESISTANCE DIRECTORY FOR APPROVED MANUFACTURERS.**



HILTI, Inc.  
Plano, Texas USA (800) 879-8000

Sheet	2 of 2
Scale	-
Date	Oct. 04, 2024

Drawing No.  
**HWD  
0873f**