

# The **cost** cutters

Hilti DD-SC PCM diamond socket cutters



Innovative socket cutters for use on masonry. Unequalled drilling performance and long life for greatly increased productivity.

**HILTI**

# Simply cut faster ...

## More applications

- Drilling socket recesses of 68 mm or 82 mm diameter for electrical and telecommunications installation applications

## More performance

- Completely new coring technology for maximum efficiency
- Quicker than ever: drill up to 7 times faster than with previous conventional methods
- Unbeaten durability and extremely long life on masonry in comparison with conventional types
- Highest performance and no segment polishing, even on materials such as high-density sand-lime block, where conventional core bits reach their limit

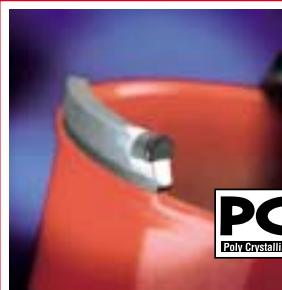
## More convenience

- New segment / holder concept for quicker and easier core removal
- Precise hole starting with perfectly matched hole-starting aids
- 40% lower contact pressure makes these new socket cutters less tiring to use, even in awkward positions
- Quick-release connection end for keyless bit change (BI+ for DD 130)
- Dustless drilling in conjunction with the Hilti DD 130 and Hilti VCD 50 vacuum cleaner

## More reliability

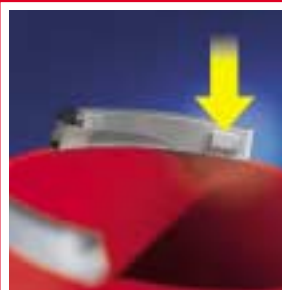
- Special wear indicator mark for easy segment wear assessment
- Laser-welded segment holders for superior strength

The new Hilti DD-SC PCM diamond socket cutters take productivity to new heights by drilling up to 7 times faster than conventional tools. They offer unparalleled durability by lasting much longer than comparable core bit types and, with their perfectly matched hole-starting aids and accessories for dustless drilling, also offer entirely new levels of convenience. Ideal for use with the DD 130 coring machine. Hilti DD-SC PCM diamond socket cutters - for a new socket-cutting experience!



### Sparkling performance and extra-long life

New PCD (polycrystalline diamond) segments for up to 7-times faster coring and much longer life. No polishing, even on high-density sand-lime block containing aggregates.



### Easy segment wear assessment

Equipped with a wear indicator mark for easy assessment of segment condition and warranty claim evaluation.



### Precise, quick hole-starting

Optimally matched hole-starting aids ensure quick starting on precisely the right spot.

# ... and cut **costs!**

## One socket cutter, many materials

Masonry blocks: sand-lime blocks, slag-aggregate blocks, lightweight concrete, cellular concrete

## Raise productivity to new heights!

Bricks: lightweight bricks, perforated bricks, hollow clay bricks, fireclay bricks



*Maximum convenience for repetitive socket cutting applications.*



*The Hilti DD 130 coring machine makes quick work of socket cutting - again and again.*



*Optimum dust removal: Keep dust to a minimum with the Hilti VCD 50 vacuum cleaner.*

# Everything you need for speed

## DD-SC PCM diamond socket cutters

Diameter (mm)	Working length (mm)	Ordering designation	Item no.
68	70	DD-SC 68 S PCM*	376312/5
68	70	DD-SC 68 PCM	376310/9
82	70	DD-SC 82 S PCM*	376313/1
82	70	DD-SC 82 PCM	376311/7

\* slotted version for use without dust removal system



## DD-BI/M24 adaptor for diamond socket cutters

Adaptor for diamond socket cutters	Ordering designation	Item no.
	DD-BI/M24	376196/2



## DD-SA hole-starting aids

Diameter (mm)	Ordering designation	Item no.
68/82	DD-SA 68/82 PCM	376320/8



## DD 130 diamond coring machine

Ordering designation	Item no.
DD 130, complete	000000/0

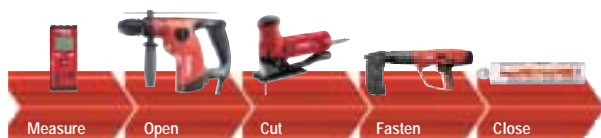
in impact-resistant plastic toolbox, complete with safety goggles, Hilti lubricant spray, cleaning cloth and oil



## VCD 50 dry vacuum cleaner

Ordering designation	Item no.
VCD 50, complete	000000/0

in cardboard box (with 1 filter, 1 hose, 1 tapered adapter, 1 dust bag)



Hilti Corporation  
FL-9494 Schaan  
Principality of Liechtenstein

[www.hilti.com](http://www.hilti.com)